



MARITEAM

- YACHTING -



MARITEAM
YACHTING

Grand Banks 36 Classic 'Karaboudjan'

LOA (m):	11.20 m
Beam (m):	3.85 m
Draft (m):	1.2 m
Engines:	2x 135hp John Deere
Cabins:	2
Homeport:	Sales office
Price:	€ (not set)

Grand Banks 36 Classic 'Karaboudjan' from 1974 - the primeval Grand Banks model that started it all! Of the total 1400 built 36's models, the 'Karaboudjan' is one of the first GRP Grand Banks.

A very nice and neat ship for her age, the current owner has always taken very good care of her. A wonderfully complete family ship with 5 berths, Eberspächter heating and a generator.

Are you already looking forward to a new sailing season? The Karaboudjan is ready!

MARITEAM YACHTING

De Draei 29, 8621 CZ Heeg 📍 The Netherlands 📞 Phone +31 (0) 582 889254

info@mariteamyachting.nl 🌐 www.mariteamyachting.nl

Main specifications

Model:	36 Classic
LOA (m):	11.20 m
Beam (m):	3.85 m
Draft (m):	1.2 m
Year:	1974
Hull Material:	GRP
Cabins:	2
Sleeping places:	5
Number of main engine(s):	2
Power of main engine(s) (hp):	135
Brand of main engine(s):	John Deere
Price:	€ (not set)
VAT status:	Paid
HIN number:	GNDC04600774

General

Name :	Karaboudjan
Shipyard:	American Marine
Cruising speed (Kn):	7.5
Maximum speed (Kn):	11
Displacement (t):	12
Fuel tank (Litre and material):	2x 800L, steel
Freshwater Tank (Liter and material):	2x 350L, SS
Black water tank (Litre and material):	100L, Plastic
Hull material:	GRP
Superstructure material:	GRP

Deck material:	GRP
Deck finish:	Teak
Interior finish:	Teak
Window material:	Single
Antifouling (Year):	2021

Accommodation

Cabins:	2
Double bed:	1
Single berths:	3
Showers:	1
Toilets:	2
Heating system (brand, model, type):	Eberspächer, D4
Stove:	Eno, 4 burner, gas
Oven:	ENO
Refrigerator:	2x / 1x galley + 1x Waeco (2021) under couch
Freezer:	1x freezer

Machinery

Main engines control (Brand and type):	Morse
Port engine (Brand, type, hp, gearbox):	John Deere, 6404, 136 hp
Engine hours port engine:	4500
Star engine (Brand, type, hp, gearbox):	John Deere, 6404, 136 hp
Engine hours starboard engine:	4500
Steering system:	Mechanisch

Drive (Shaft, IPS, Jet):	Shaft drive
Shaft lubrication:	Waterlubricated
Prop (Number of blades, material):	3 blade, brons
Generator (Brand, type, Kw):	Fuest, 6 Kva
Generator hours:	1683
Water presure pump (Brand, model):	Jabsco
Hot water system:	Boiler
Fuel polishing system:	Racor

Electrical system

Battery charger (V/W/Amp):	Victron 40 Amp
Inverter (V/W/Amp):	Victron 700W
House battery (Number of battery,type, total Amp, year):	2x 260 Amp (2020)
Start battery (Number of battery,type, total Amp, year):	2x 260 Amp (2020)

Safety system

Electrical bilge pump:	Yes
Manual bilge pump:	Yes
Search light:	Yes
Horn:	Yes

Navigation system

Compass:	Sestrel Moore
----------	---------------

Autopilot:	Neco
Depth meter:	Raymarine ST60 + Raymarine E90W
VHF:	Simrad RT1200

Equipment

Anchor:	Bruce RVS, 30 kg
Windlass:	Yes
Deckwash:	1

































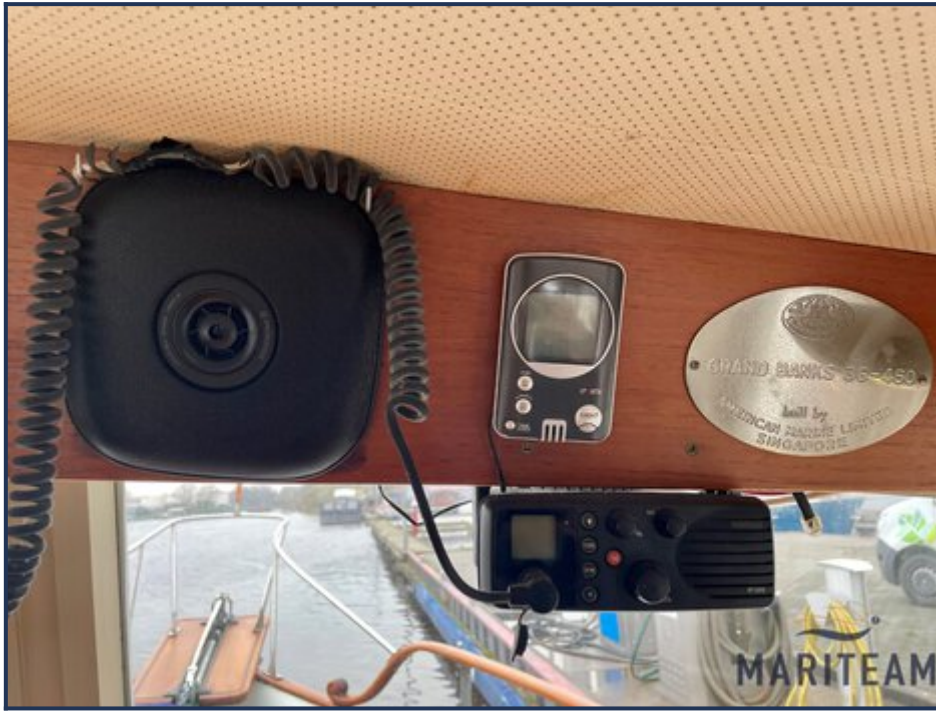


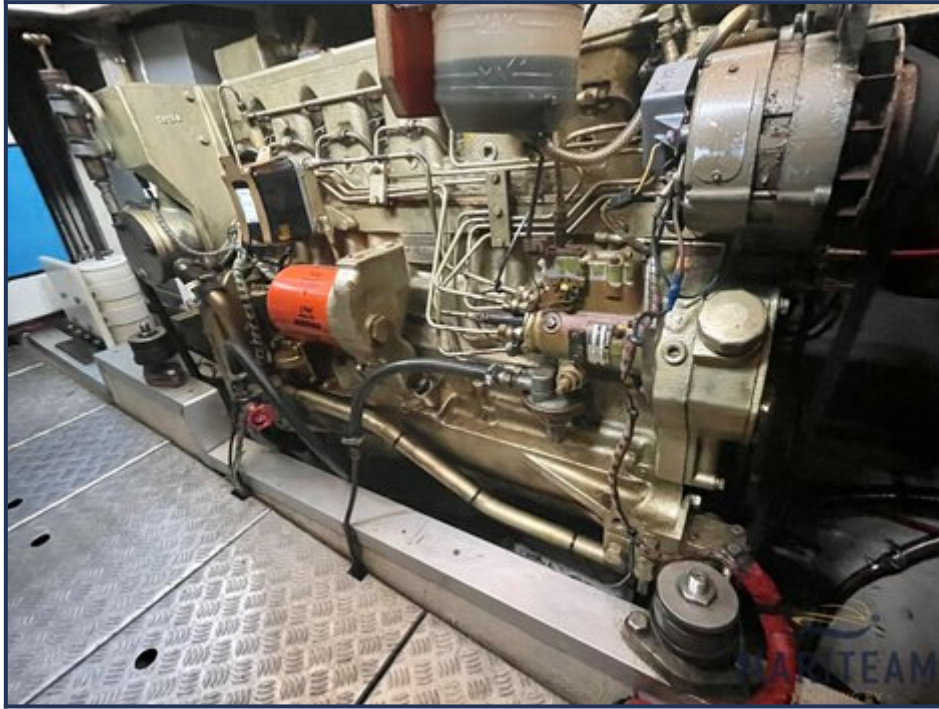


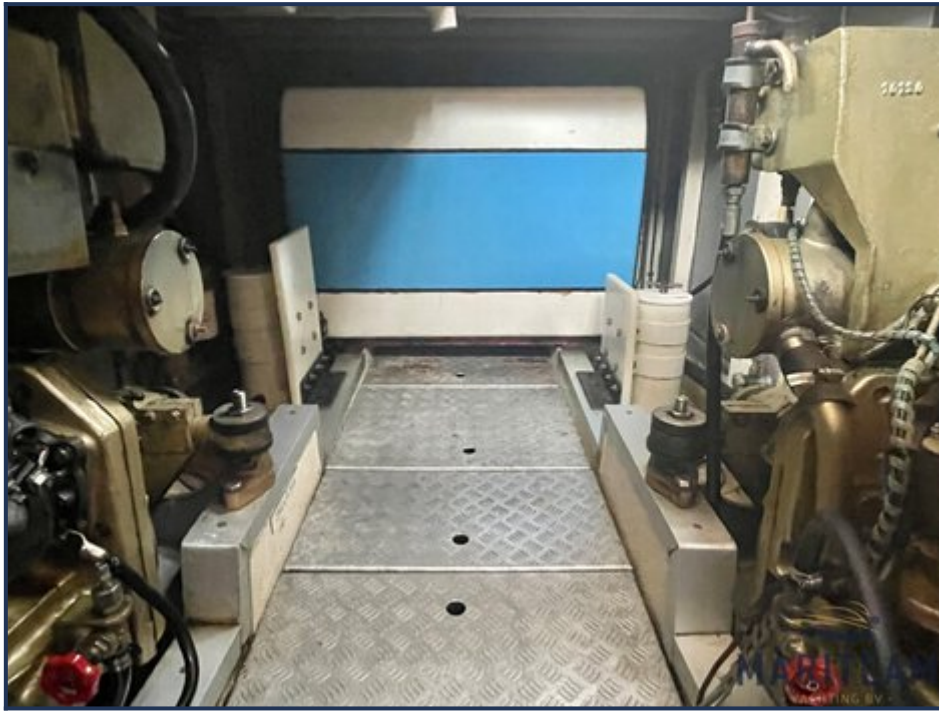












These particulars are given in good faith as supplied but cannot be guaranteed and cannot be used for contracts.