



MARITEAM

- YACHTING -




MARITEAM
- YACHTING BY -

Grand Banks 46 Europa

LOA (m):	14.20 m
Beam (m):	4.50 m
Draft (m):	1.33 m
Engines:	2x 300hp Caterpillar
Cabins:	2
Homeport:	Service office, Heeg
Price:	€ (not set)

The Grand Banks 46 Europa series is a highly popular choice, renowned for its seamless integration of indoor and outdoor living spaces. It boasts a spacious aft deck, sliding doors that lead to a cozy saloon, and a roomy flybridge perfect for outdoor enjoyment. Equipped with a well-appointed galley and ample storage, this yacht ensures comfort during extended stays. With two cabins, each featuring an ensuite bathroom, the Grand Banks 46 Europa offers a luxurious and versatile experience for both long voyages and weekend escapes on the water.

MARITEAM YACHTING

De Draei 29, 8621 CZ Heeg 📍 The Netherlands 📞 Phone +31 (0) 582 889254
info@mariteamyachting.nl 🌐 www.mariteamyachting.nl

Main specifications

Model:	46 Europa
LOA (m):	14.20 m
Beam (m):	4.50 m
Draft (m):	1.33 m
Year:	1992
Hull Material:	GRP
Cabins:	2
Sleeping places:	4
Number of main engine(s):	2
Power of main engine(s) (hp):	300
Brand of main engine(s):	Caterpillar
Price:	€ (not set)
VAT status:	Paid
HIN number:	GNDF0137K293

General

Shipyard:	American Marine
Air draft (m):	4.44 (top of windshield)
Displacement (t):	18
Fuel tank (Litre and material):	2, 2271L
Freshwater Tank (Liter and material):	3, 1136L
Black water tank (Litre and material):	2
Hull material:	GRP
Superstructure material:	GRP
Deck material:	GRP
Deck finish:	Teak

Interior finish:	Teak
Window material:	Single glass

Accommodation

Cabins:	2
Double bed:	1
Single berths:	2
Showers:	2
Toilets:	2, vacuflush
Heating system (brand, model, type):	Kabola, Central heating
Stove:	Teka, 4 burner, gas
Combi oven/microwave:	Pelgrim
Refrigerator:	Siemens
Freezer:	Siemens
Dish washer:	Siemens
Washing machine:	Siemens SIWAMAT 5100
Dryer:	Siemens sunshine

Machinery

Main engines control (Brand and type):	Kobelt
Port engine (Brand, type, hp, gearbox):	Caterpillar 3116 TA, 300 hp, Twin Disc
Engine hours port engine:	3048
Star engine (Brand, type, hp, gearbox):	Caterpillar 3116 TA, 300 hp, Twin Disc
Engine hours starboard engine:	3071
Steering system:	Hydraulic

Drive (Shaft, IPS, Jet):	Shaft drive
Shaft lubrication:	Waterlubricated
Prop (Number of blades, material):	2x Stone Marine, 4 blade
Generator (Brand, type, Kw):	Onan 6.5 MDKDP26501C
Generator hours:	1031
Bowthruster (Brand, type, elec/hyd):	Vetus
Water pressure pump (Brand, model):	Groco Paragon
Hot water system:	Torrid, 75L
Macerator pump:	Sealand
Trim system:	Boat Leveller

Electrical system

DC system (V) AC system (V):	12V / 220V
Battery charger (V/W/Amp):	Mass Charger 12/60 + Mastervolt Dakar Combi 12/1500-65
Inverter (V/W/Amp):	Mastervolt Dakar Combi 12/1500-65
House battery (Number of battery,type, total Amp, year):	2, Varta 240 Ah + generator 1, Wilco Royal 74 Ah
Start battery (Number of battery,type, total Amp, year):	2, Allpa 200 Ah

Safety system

Electrical bilge pump:	2, Rule
Manual bilge pump:	1
Fire extinguisher engine room:	Automatic
Horn:	1

Navigation system

Compass:	2, Danforth
Radar :	Raymarine
Autopilot:	2, Raymarine ST8002
Depth meter:	2, Raymarine ST60+ depth + flybridge Raymarine ST60+ Tridata
VHF:	2, Shipmate RS8300

Equipment

Anchor:	1
Windlass:	Lofrans Falkon, 1500W
Deckwash:	1

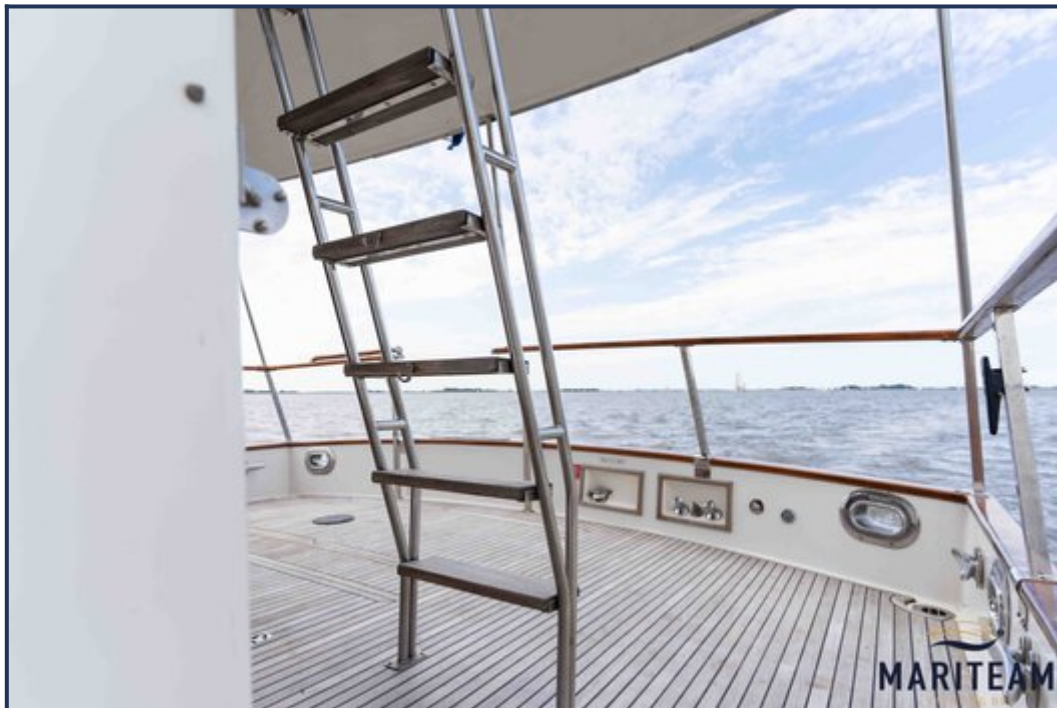


















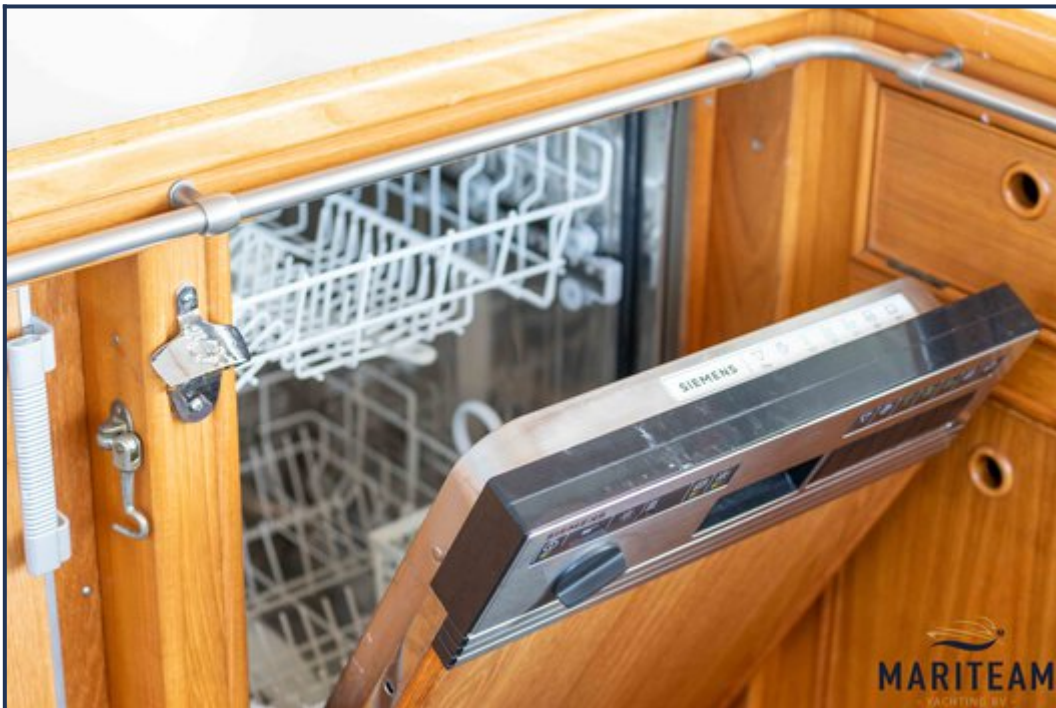






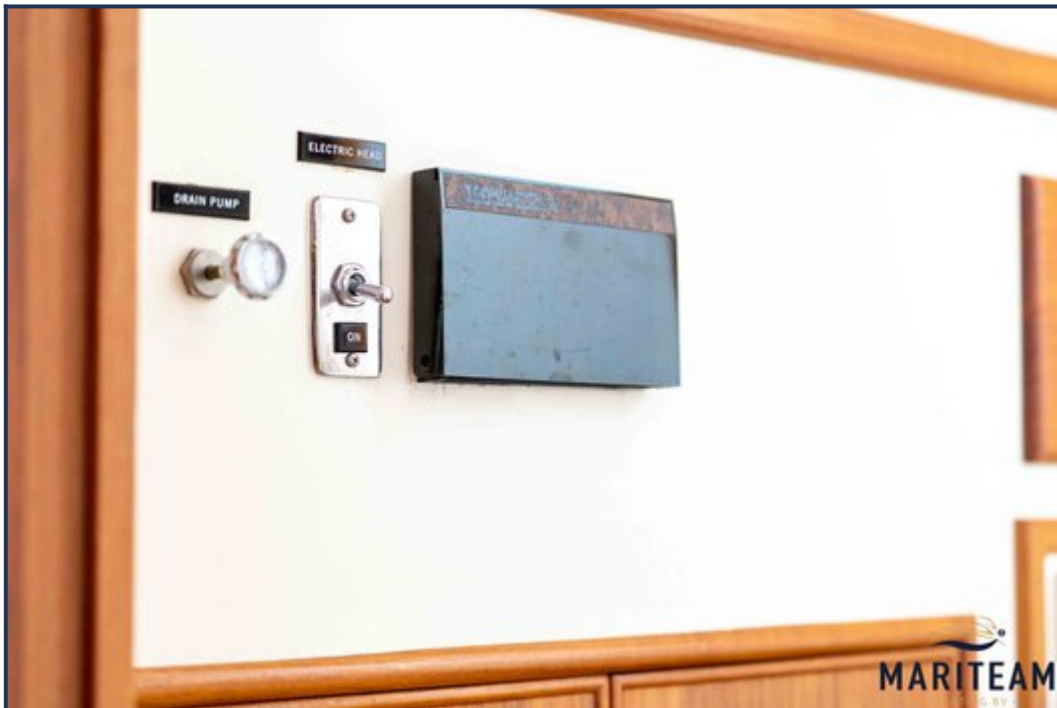








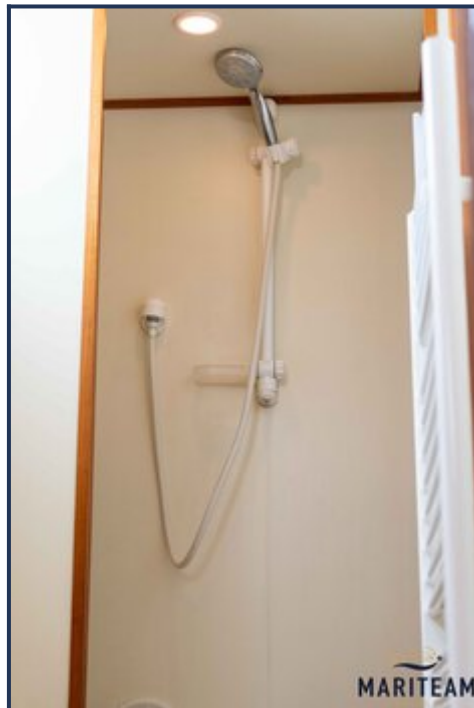
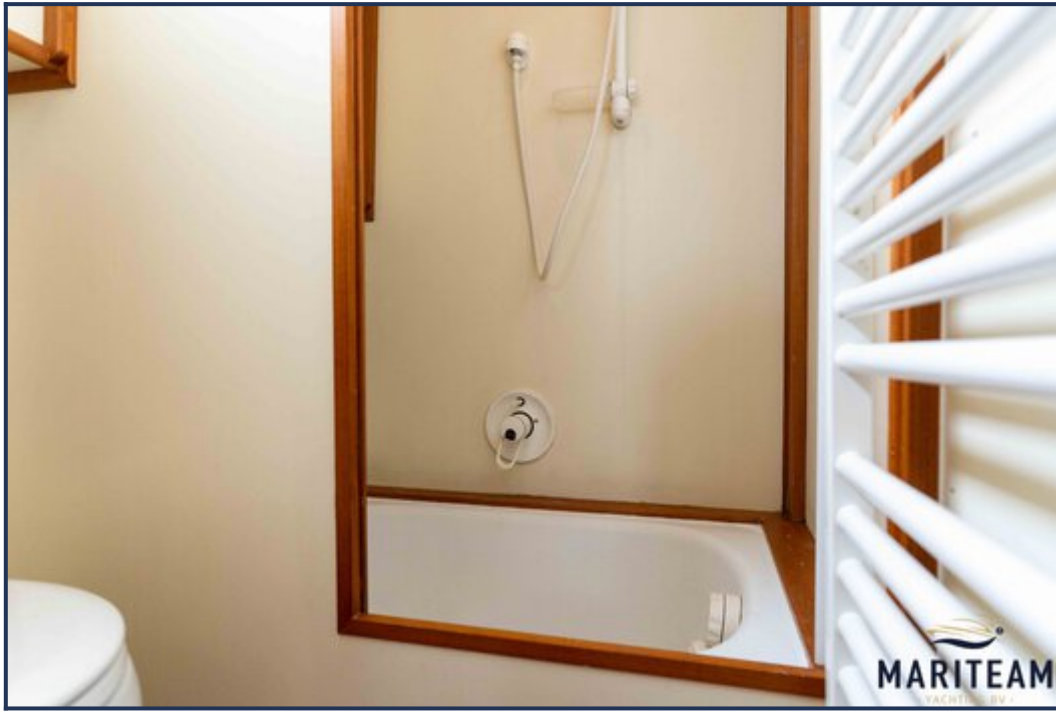


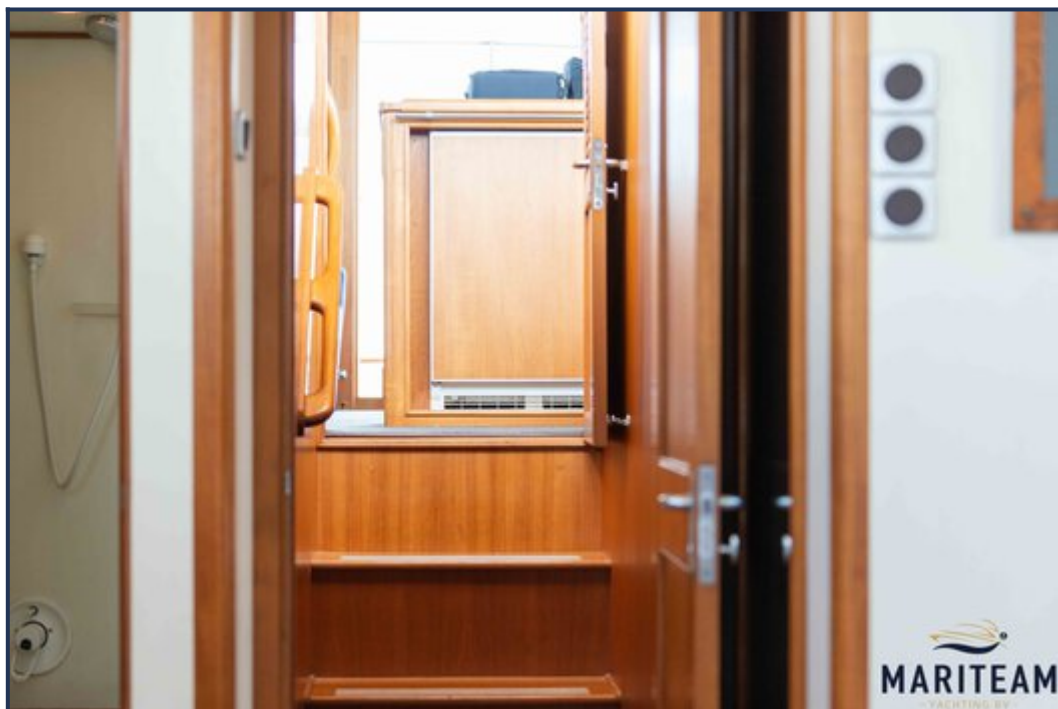


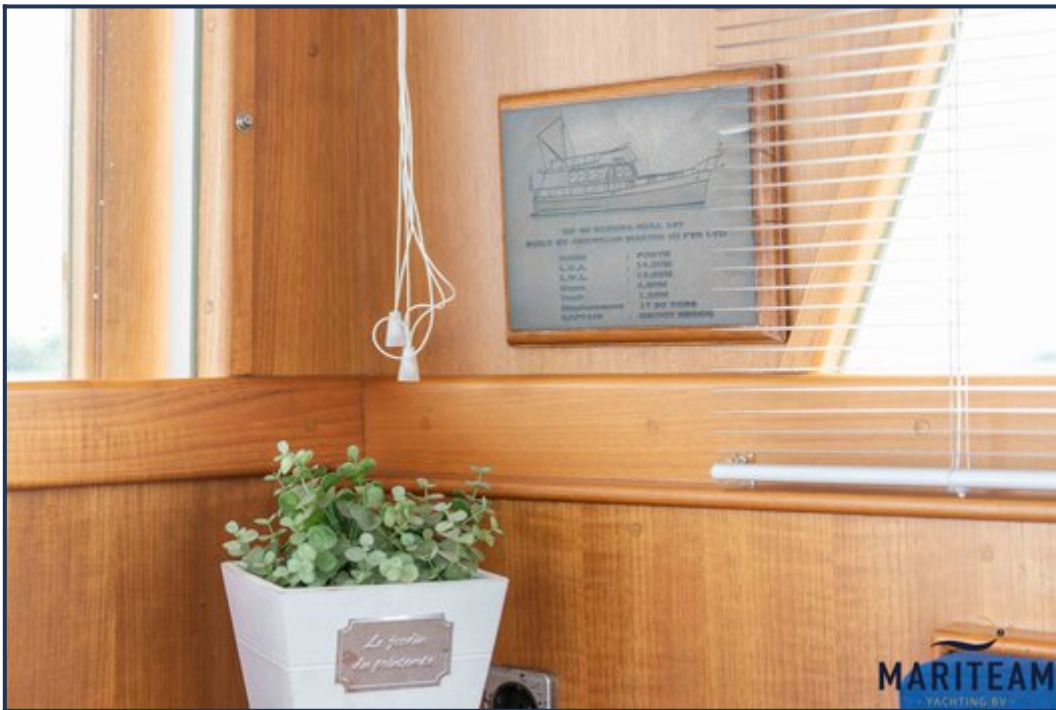










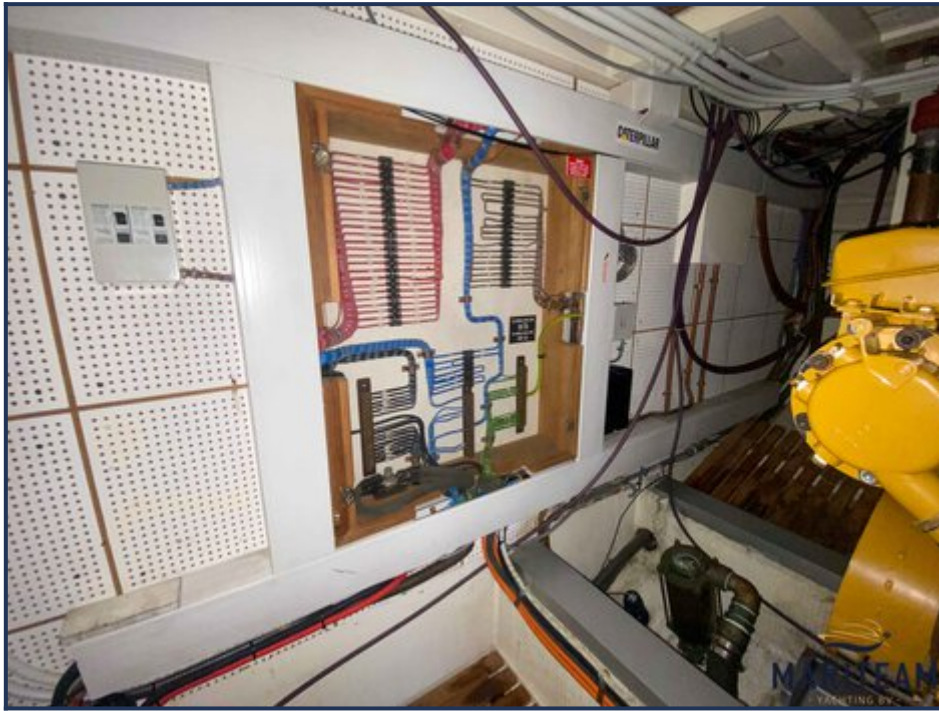


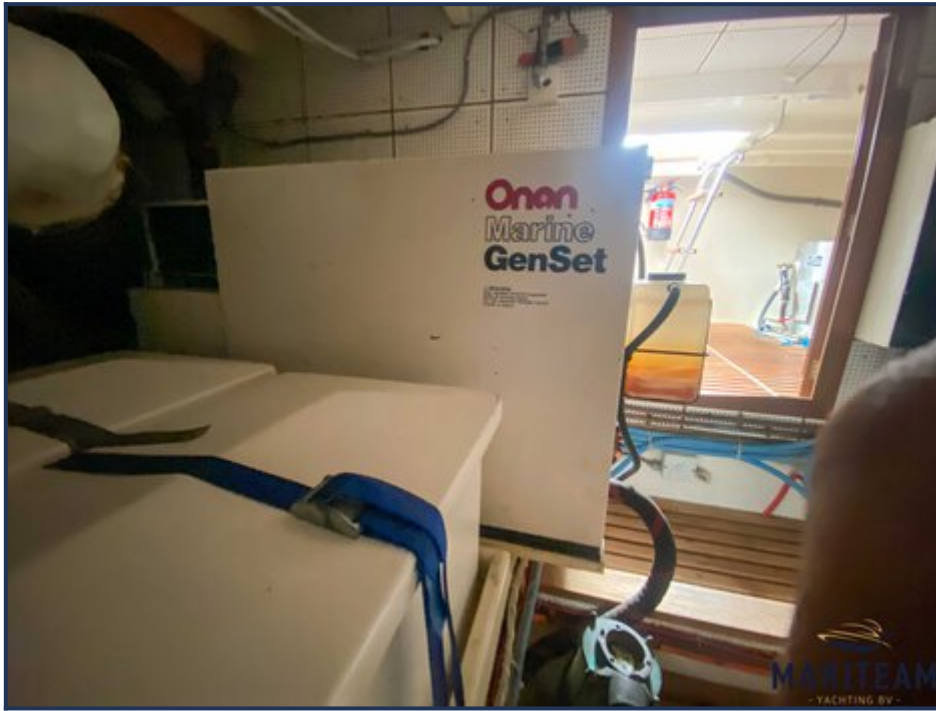












These particulars are given in good faith as supplied but cannot be guaranteed and cannot be used for contracts.