



## Grand Banks 42 EU 'Monty'

LOA (m):	13.17 m
Beam (m):	4.29 m
Draft (m):	1.27 m
Engines:	2x 300hp Caterpillar
Cabins:	2
Homeport:	Denia, Spain
Price:	€ 289,000

Grand Banks 42 Europa 'Monty' - one of the few popular Grand Banks 42 Europa's for sale.

The 'Monty' is a great version of this wanted model. Due to her covered cockpit which is on the same level as the saloon and offers you some nice shade on the hot summer days. In for some sunshine on your skin? No problem, just sit back and relax on the sunbed on the bow or choose for a level higher and see the sunset from the spacious flybridge.

With her 2 cabin layout and powerful Caterpillar 3116TA 300 hp engines, she is the perfect yacht for the longer cruises and stay onboard, but she can also go up to a maximum speed of 17 knots if you are in a hurry to get to the next port.

All together, she is ready for a great new sailing season, just fillup the fridge and open that throttle!

\* virtual 360 tour available on request

## Main specifications

Model:	42 Europa
LOA (m):	13.17 m
Beam (m):	4.29 m
Draft (m):	1.27 m
Year:	1998
Hull Material:	GRP
Cabins:	2
Sleeping places:	2
Number of main engine(s):	2
Power of main engine(s) (hp):	300
Brand of main engine(s):	Caterpillar
Price:	€ 289,000
VAT status:	Paid

## General

Name :	Monty
Shipyard:	American marine Limited
Air draft (m):	4.34
CE-category:	A
Displacement (t):	15.5
Hull material:	GRP
Deck material:	GRP
Superstructure material:	GRP
Deck finish:	Teak
Fuel tank (Litre and material):	2271L
Freshwater Tank (Liter and material):	1052L

Black water tank (Litre and material):	Yes
Antifouling (Year):	2020
Maximum speed (Kn):	17
Cruising speed (Kn):	8

## Accommodation

Stove:	3 burner, gas
Refrigerator:	2x
Freezer:	Polarmate
Ice cubes maker:	U-line
Interior finish:	Teak
Single berths:	2
Cabins:	2
Toilets:	1, vacuflush
Showers:	1
Combi oven/microwave:	LG Wavedom MC 8090S

## Machinery

Port engine (Brand, type, hp, gearbox):	Caterpillar 3116TA, 300 hp, Twin Disc MG-5061-A
Engine hours port engine:	1895
Star engine (Brand, type, hp, gearbox):	Caterpillar 3116TA, 300 hp, Twin Disc MG-5061-A
Engine hours starboard engine:	1895
Main engines control (Brand and type):	Morse
Drive (Shaft, IPS, Jet):	Shaft drive
Shaft lubrication:	Waterlubricated



Prop (Number of blades, material):	2x Stone Marine, 4 blade
Generator (Brand, type, Kw):	Onan 6.5 Kw
Generator hours:	700
Bowthruster (Brand, type, elec/hyd):	Vetus
Electrical bilge pump:	2, Rule
Manual bilge pump:	1, PAR 33965-0000
Water pressure pump (Brand, model):	Paragon Junior PJR
Hot water system:	Boiler Seaward, 18 gal
Heating system (brand, model, type):	Eberspächer D8LC-12V
Airconditioning system (Brand, model):	portable unit
Trim system:	Bennett
Macerator pump:	Sealand
Steering system:	Hydraulic
Deckwash:	1

## Electrical system

House battery (Number of battery,type, total Amp, year):	6 in total, of which 2x engine 180 Ah + 110 Ah for generator (G.COR acid van 2020)
DC system (V) AC system (V):	12V / 220V
Battery charger (V/W/Amp):	Mastervolt 12/50-3

## Safety system

Radar reflector:	Yes
------------------	-----

## Navigation system

Compass:	Yes
Radar :	Raymarine
VHF:	Sailor Compact VHF RT2048
AIS:	Yes
Autopilot:	Simrad Robertson AP20

## Equipment

Anchor:	1x
Windlass:	Lofrans Tigres
Tender:	Yes + Honda 2pk
Horn:	Grover





















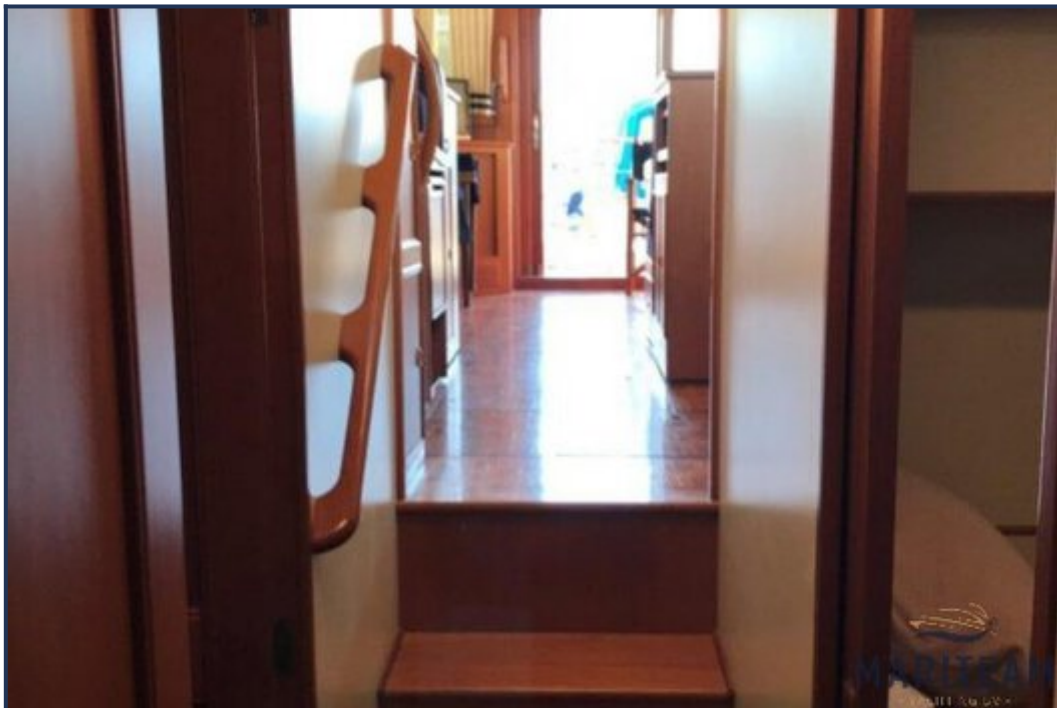
















*These particulars are given in good faith as supplied but cannot be guaranteed and cannot be used for contracts.*