



MARITEAM

- YACHTING -



Grand Banks 32 Classic 'Delphin'

LOA (m):	9.73 m
Beam (m):	3.50 m
Draft (m):	1.14 m
Engines:	1x 135hp Ford Sabre
Cabins:	1
Homeport:	Heeg
Price:	€ (not set)

Grand Banks 32 Classic 'Delphin'

MARITEAM YACHTING

De Draei 29, 8621 CZ Heeg 📍 The Netherlands 📞 Phone +31 (0) 582 889254
info@mariteamyachting.nl 🌐 www.mariteamyachting.nl

Main specifications

Model:	32 Classic
LOA (m):	9.73 m
Beam (m):	3.50 m
Draft (m):	1.14 m
Year:	1991
Hull Material:	GFK
Cabins:	1
Sleeping places:	2
Number of main engine(s):	1
Power of main engine(s) (hp):	135
Brand of main engine(s):	Ford Sabre
Price:	€ (not set)
VAT status:	Paid
HIN number:	GNDB0851F191

General

Name :	Delphin
Shipyard:	American marine Limited
Cruising speed (Kn):	7
Maximum speed (Kn):	9
Displacement (t):	8
Fuel tank (Litre and material):	2x 480L
Freshwater Tank (Liter and material):	416L
Black water tank (Litre and material):	1
Hull material:	GRP
Superstructure material:	GRP

Deck material:	GRP
Deck finish:	Teak
Interior finish:	Teak
Window material:	Single glass
Antifouling (Year):	2020

Accommodation

Cabins:	1
Single berths:	2
Showers:	1
Toilets:	1, Domatic
Heating system (brand, model, type):	Eberspächer
Stove:	3 burner, gas
Oven:	Yes
Refrigerator:	Waeco
Freezer:	Waeco, freezer in fridge

Machinery

Main engines control (Brand and type):	Morse
Port engine (Brand, type, hp, gearbox):	Ford Sabre, 2725E, 135 pk, Borg Warner
Engine hours port engine:	3109
Drive (Shaft, IPS, Jet):	Shaft drive
Shaft lubrication:	Waterlubricated
Bowthruster (Brand, type, elec/hyd):	Side-power
Sternthruster (Brand, type, elec/hyd):	Vetus

Water pressure pump (Brand, model):	Yes
Hot water system:	Raritan
Macerator pump:	Jabsco

Electrical system

DC system (V) AC system (V):	12V / 220 V
Battery charger (V/W/Amp):	Mastervolt Mass combi 12/1600-60
Inverter (V/W/Amp):	Mastervolt Mass combi 12/1600-60
House battery (Number of battery,type, total Amp, year):	4x Varta LFD230 (2018)

Safety system

Electrical bilge pump:	Rule
Manual bilge pump:	PAR-33965-0000
Horn:	1

Navigation system

Compass:	2x Danforth
Autopilot:	1x Powerhelm
Depth meter:	2x Raymarine ST60+
VHF:	2x Shipmate (not connected)

Equipment

Tender:	1 + Suzuki 6hp
Anchor:	1
Windlass:	Vetus, electric
Deckwash:	1
Deck shower:	1

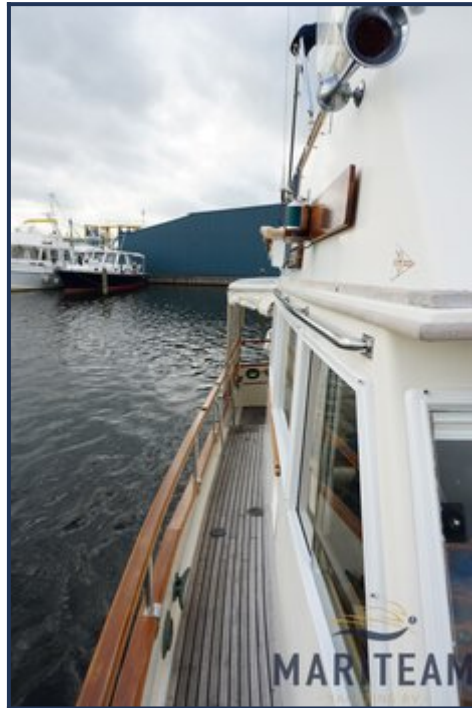
























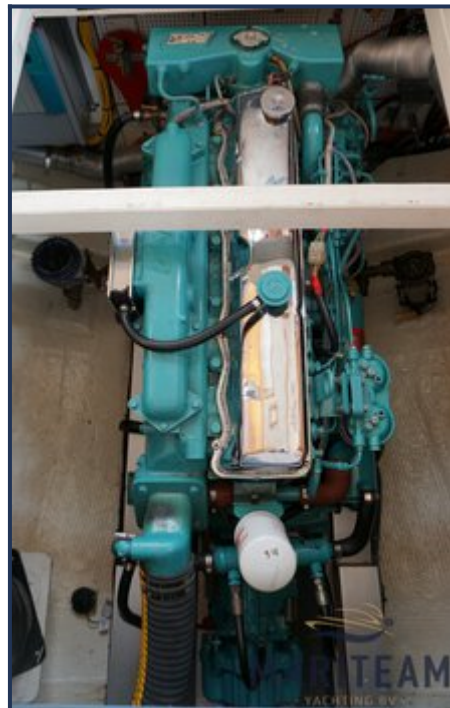














These particulars are given in good faith as supplied but cannot be guaranteed and cannot be used for contracts.