



# MARITEAM

- YACHTING -



## Grand Banks 36 Europa 'Max'

LOA (m):	11.28 m
Beam (m):	3.86 m
Draft (m):	1.22 m
Engines:	2x 135hp Ford Lehman
Cabins:	2
Homeport:	Sales office
Price:	€ (not set)

Grand Banks 36 Europe 'Max' - the perfect ship to stay comfortably on board in all weather conditions, thanks to its fine layout and covered cockpit. The salon is very cozy and spacious with its L-bank and spacious kitchen, as well as the 2 cabins make it possible to stay with several people on board.

The two Ford Lehman 135 HP engines are known for their low consumption and high reliability. In addition, it is equipped with air conditioning and hot air heating, in 2021 the ship is equipped with new batteries and a waste water tank. In short a complete ship.

### MARITEAM YACHTING

De Draei 29, 8621 CZ Heeg 📍 The Netherlands 📞 Phone +31 (0) 582 889254  
[info@mariteamyachting.nl](mailto:info@mariteamyachting.nl) 🌐 [www.mariteamyachting.nl](http://www.mariteamyachting.nl)

## Main specifications

Model:	36 Europa
LOA (m):	11.28 m
Beam (m):	3.86 m
Draft (m):	1.22 m
Year:	1987
Hull Material:	GRP
Cabins:	2
Sleeping places:	4
Number of main engine(s):	2
Power of main engine(s) (hp):	135
Brand of main engine(s):	Ford Lehman
Price:	€ (not set)
VAT status:	Paid
HIN number:	GNDC0812L788

## General

Name :	Max
Hull material:	GRP
Deck material:	GRP
Superstructure material:	GRP
Deck finish:	Teak
Window material:	Single glass
Fuel tank (Litre and material):	1550 L, SS
Freshwater Tank (Liter and material):	775 L, aluminium
Antifouling (Year):	2020, including new underwater system
Maximum speed (Kn):	10

Cruising speed (Kn):

8

## Accommodation

Stove: ETNA, gas

Refrigerator: Isotherm

Freezer: Isotherm

Interior finish: Teak

Single berths: 2

Double bed: 1

Cabins: 2

Toilets: 1

Showers: 1

Combi oven/microwave: ETNA combi

## Machinery

Port engine (Brand, type, hp, gearbox): Ford lehman 2725E, 135hp

Engine hours port engine: 3387

Star engine (Brand, type, hp, gearbox): Ford lehman 2725E, 135 PK

Engine hours starboard engine: 3387

Main engines control (Brand and type): Morse

Drive (Shaft, IPS, Jet): Shaft drive

Shaft lubrication: Water lubricated

Bowthruster (Brand, type, elec/hyd): Sidepower

Electrical bilge pump: 2x rule

Manual bilge pump: 1x

Water presure pump (Brand, model):	Jabsco
Hot water system:	Isothemp, boiler 40L
Heating system (brand, model, type):	Webasto Airtop EVO 40
Airconditioning system (Brand, model):	Cruisair
Steering system:	Hydraulic
Deckwash:	1

## Electrical system

House battery (Number of battery,type, total Amp, year):	4x 2021
Start battery (Number of battery,type, total Amp, year):	2x 2021
DC system (V) AC system (V):	12V / 220V
Inverter (V/W/Amp):	Mastervolt 12/2000
Battery charger (V/W/Amp):	Mastervolt 12/70-3

## Navigation system

Compass:	Danforth
Gps plotter:	Raymarine A50
Radar screen:	Raymarine A50
Radar :	Raymarine
Depth meter:	Raymarine ST60
Log:	Raymarine ST60 tridata
VHF:	Sailor, RT144C
Autopilot:	Raymarine
Rudder indicator:	VDO

## Equipment

Anchor:	1
Windlass:	Lofrans Tigres
Tender:	1
Horn:	1



























































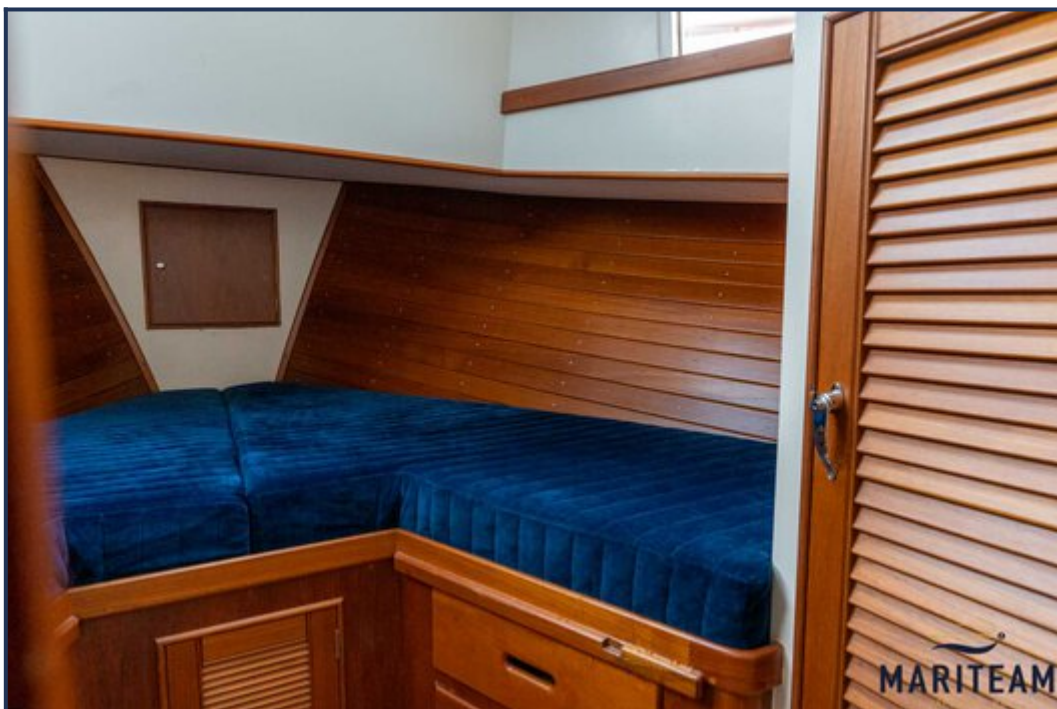


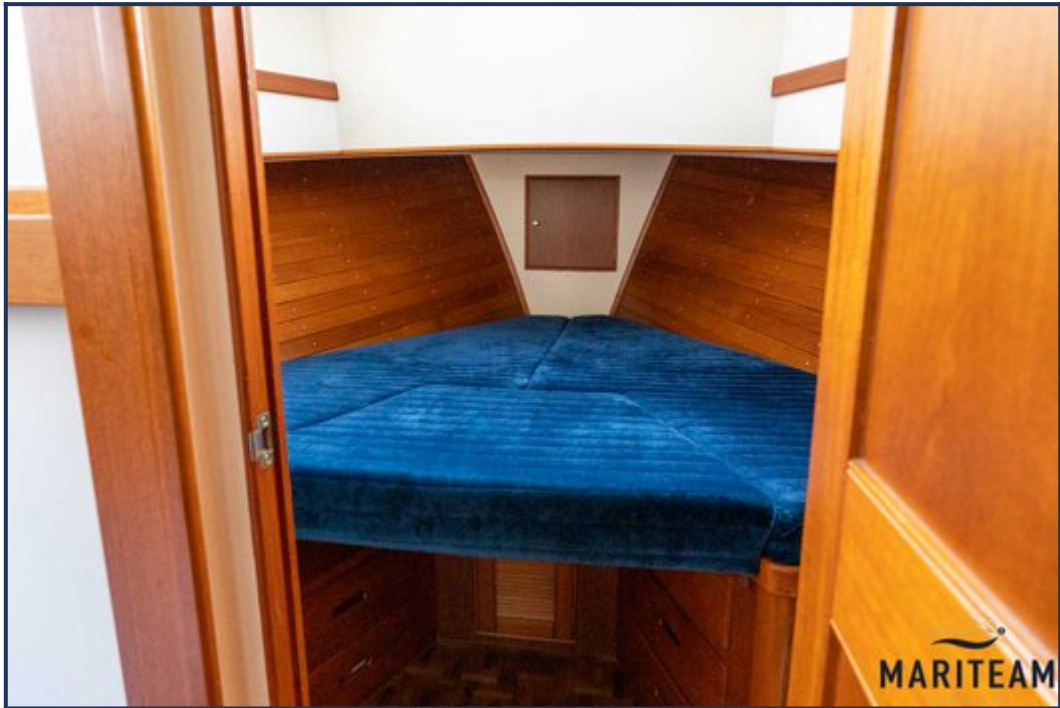




































*These particulars are given in good faith as supplied but cannot be guaranteed and cannot be used for contracts.*