



MARITEAM

- YACHTING -



Grand Banks 42 Europa 'Quo Vadis'

LOA (m):	13.17 m
Beam (m):	4.29 m
Draft (m):	1.27 m
Engines:	2x 330hp Cummins
Cabins:	2
Homeport:	The Netherlands
Price:	€ (not set)

Grand Banks 42 Europe 'Quo Vadis' with hull number 1523 - the most recent, neat and well maintained GB42EU on the European market!

This beautiful ship is fully equipped to make the stay on board as comfortable as possible. Hot air heating from Eberspächer, Webasto airconditioning in the 2 cabins, bow and stern thruster, cameras linked to your Garmin 12", Sentinel monitoring of the electrical system, heater and boiler and with track & trace, an electrically folding mast and full tent around the cockpit.

A viewing of the 'Quo Vadis' is therefore highly

MARITEAM YACHTING

De Draei 29, 8621 CZ Heeg 📍 The Netherlands 📞 Phone +31 (0) 582 889254

info@mariteamyachting.nl 🌐 www.mariteamyachting.nl



MARITEAM

- YACHTING -

recommended!

MARITEAM YACHTING

De Draei 29, 8621 CZ Heeg 📍 The Netherlands 📞 Phone +31 (0) 582 889254

info@mariteamyachting.nl 📧 www.mariteamyachting.nl

Main specifications

Model:	42 Europa
LOA (m):	13.17 m
Beam (m):	4.29 m
Draft (m):	1.27 m
Year:	2003
Hull Material:	GRP
Cabins:	2
Sleeping places:	4
Number of main engine(s):	2
Power of main engine(s) (hp):	330
Brand of main engine(s):	Cummins
Price:	€ (not set)
VAT status:	Paid
HIN number:	GNDD1523D303

General

Name :	Quo Vadis
Shipyard:	Grand Banks Yachts
CE-category:	A
Cruising speed (Kn):	8
Maximum speed (Kn):	17
Air draft (m):	4.34
Displacement (t):	15.5
Fuel tank (Litre and material):	2271L
Freshwater Tank (Liter and material):	1052L
Black water tank (Litre and material):	Yes

Hull material:	GRP
Superstructure material:	GRP
Deck material:	GRP
Deck finish:	Teak
Interior finish:	Teak
Window material:	Single glass
Antifouling (Year):	2020

Accommodation

Cabins:	2
Double bed:	1
Single berths:	2
Showers:	1
Toilets:	1, Vetus, electric
Heating system (brand, model, type):	Eberspächer, hot air
Airconditioning system (Brand, model):	2x webasto airconditioning in cabins
Stove:	Siemens, 4, electric
Combi oven/microwave:	Siemens combi
Refrigerator:	Waeco
Freezer:	Waeco

Machinery

Main engines control (Brand and type):	Kobelco single lever
Port engine (Brand, type, hp, gearbox):	Cummins, 6BTA5.9-M3, 330 hp
Engine hours port engine:	1674

Star engine (Brand, type, hp, gearbox):	Cummins, 6BTA5.9-M3, 330 hp
Engine hours starboard engine:	1676
Steering system:	Hydraulic
Drive (Shaft, IPS, Jet):	Shaft drive
Shaft lubrication:	Waterlubricated
Generator (Brand, type, Kw):	Onan
Generator hours:	276
Bowthruster (Brand, type, elec/hyd):	Vetus
Sternthruster (Brand, type, elec/hyd):	Side power
Water pressure pump (Brand, model):	Flojet
Hot water system:	Isotherm boiler, +/- 60L
Macerator pump:	Yes
Trim system:	Bennett

Electrical system

DC system (V) AC system (V):	12
Battery charger (V/W/Amp):	1, Victron 12V/100 Ah + 1, Victron energy Phoenix 24V/25 Ah sternthruster
Inverter (V/W/Amp):	Mass Sine 12V/2000
House battery (Number of battery,type, total Amp, year):	3, 220 Ah (2020) + 1, 220 Ah generator
Start battery (Number of battery,type, total Amp, year):	1, 220 Ah (2020)
Bowthruster battery (Number of battery,type, total Amp, year):	2, 230 Ah
Sternthruster battery (Number of battery,type, total Amp, year):	4, Optima 65 Ah

Safety system

Electrical bilge pump:	3
Manual bilge pump:	1
Horn:	1

Navigation system

Compass:	Ritchie
Gps plotter:	Garmin 12"
Radar screen:	Garmin 12"
Autopilot:	Garmin
Rudder indicator:	VDO
Log:	Garmin
Depth meter:	Garmin
VHF:	Simrad RS87 + Garmin VHF 200i
AIS:	Garmin

Equipment

Tender:	Zodiac + 4 hp Yamaha
Tender crane:	Steelhead ES1000
Anchor:	Delta, 80m galvanized chain
Windlass:	Lofrans Tigres 1200W/12V
Deck shower:	1































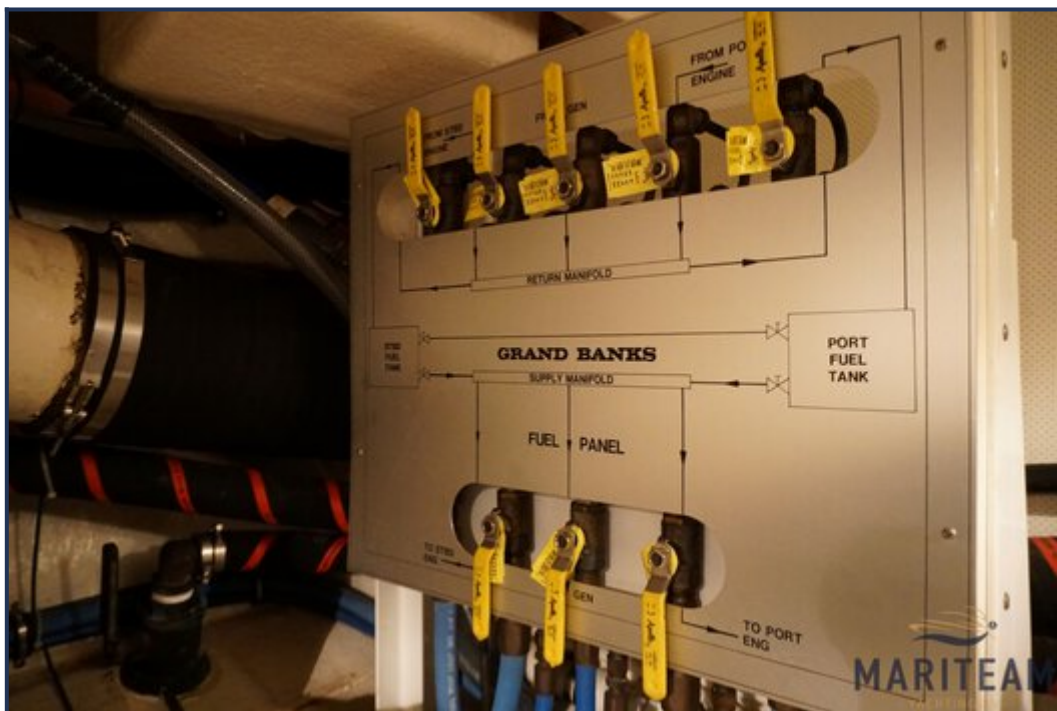


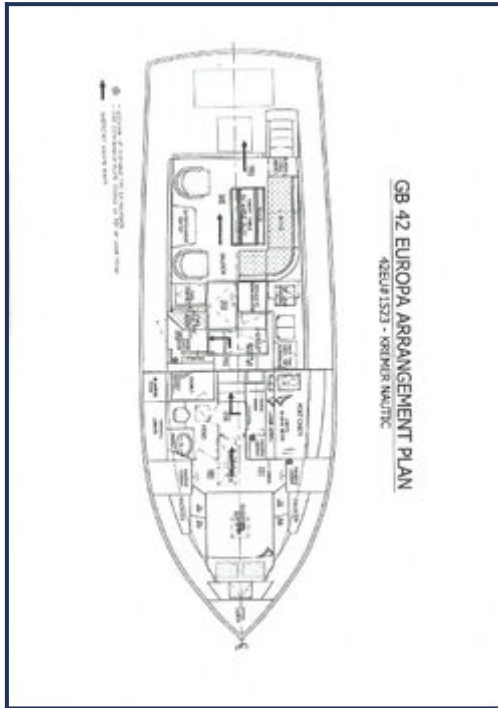












These particulars are given in good faith as supplied but cannot be guaranteed and cannot be used for contracts.