



Elling E6 'APAVA'

LOA (m):	19.95 m
Beam (m):	5.40 m
Draft (m):	1.5 m
Engines:	1x 1000hp Volvo Penta
Cabins:	3
Homeport:	Stuart, FL, USA / coming soon to The Netherlands
Price:	€ (not set)

Elling E6 'APAVA' - coming to our Sales office in The Netherlands very soon!

The 'APAVA' features a very spacious three cabin, three head layout with separate crew quarters, two spacious salon areas, large galley, wet bar and plentiful seating in the cockpit. Powered by an upgraded Volvo D13 1000hp engine with separate Volvo get-home engine. 'APAVA' is fully outfitted and extensively equipped for long distance cruising or live-aboard, also she is in excellent condition and ready to cruise today!



MARITEAM

- YACHTING -

MARITEAM YACHTING

Ceresweg 20-B, 8938 BG Leeuwarden 📍 The Netherlands 📞 Phone +31 (0) 582 889254
info@mariteamyachting.nl 📧 www.mariteamyachting.nl

Main specifications

Model:	E6
LOA (m):	19.95 m
Beam (m):	5.40 m
Draft (m):	1.5 m
Year:	2018
Hull Material:	GRP
Cabins:	3
Sleeping places:	6
Number of main engine(s):	1
Power of main engine(s) (hp):	1000
Brand of main engine(s):	Volvo Penta
Price:	€ (not set)
VAT status:	Not paid

General

Name :	APAVA
Shipyard:	Elling Yachts B.V.
CE-category:	A
Displacement (t):	30
Hull material:	GRP
Deck material:	GRP
Superstructure material:	GRP
Deck finish:	Teak
Window material:	Tinted safety glass
Fuel tank (Litre and material):	5000L
Freshwater Tank (Liter and material):	1200L

Black water tank (Litre and material):	300L
--	------

Accommodation

Stove:	Pilothouse: 2 burners, galley: 4 burners
Refrigerator:	Pilothouse: 1x, galley: 1x
Freezer:	1
Wine cooler:	Yes
Interior finish:	Mahogany
Washing machine:	Miele
Dryer:	Miele
Single berths:	2 + 1 crew
Double bed:	2
Cabins:	3
Toilets:	3
Showers:	3
Combi oven/microwave:	Yes

Machinery

Port engine (Brand, type, hp, gearbox):	Volvo Penta D13, 1000 hp
Engine hours port engine:	600
Drive (Shaft, IPS, Jet):	Shaft drive
Prop (Number of blades, material):	5 blade
Emergency engine (Brand, type, hp, gearbox):	Volvo Penta D2, 75 hp
Generator (Brand, type, Kw):	Yes, 14Kw
Bowthruster (Brand, type, elec/hyd):	Yes

Sternthruster (Brand, type, elec/hyd):	Yes
Electrical bilge pump:	2
Manual bilge pump:	Yes
Water pressure pump (Brand, model):	Yes
Hot water system:	Yes
Heating system (brand, model, type):	Central heating
Airconditioning system (Brand, model):	Yes, reverse cycle (50.000BTU)
Stabilizer system:	Seakeeper 9 Gyro
Macerator pump:	Yes
Steering system:	Hydraulic
Deckwash:	Yes

Electrical system

House battery (Number of battery,type, total Amp, year):	Li-Ion, 24V, 800Ah
Start battery (Number of battery,type, total Amp, year):	85Ah
DC system (V) AC system (V):	12V / 220V / 110V
Inverter (V/W/Amp):	Yes, 14 kW
Battery charger (V/W/Amp):	24V, 120 Ah

Safety system

Fire extinguisher engine room:	Yes
High water alarm:	Yes

Navigation system

Compass:	Raymarine I-70
Depth meter:	Raymarine I-70
VHF:	Raymarine Ray260
AIS:	Raymarine AIS 650
Autopilot:	Raymarine P70R

Equipment

Anchor:	WASI (Rocna), 60m RVS chain
Windlass:	Ja, electric
Gangway:	Yes, hydraulic
Tender crane:	Tender garage
Horn:	Yes

































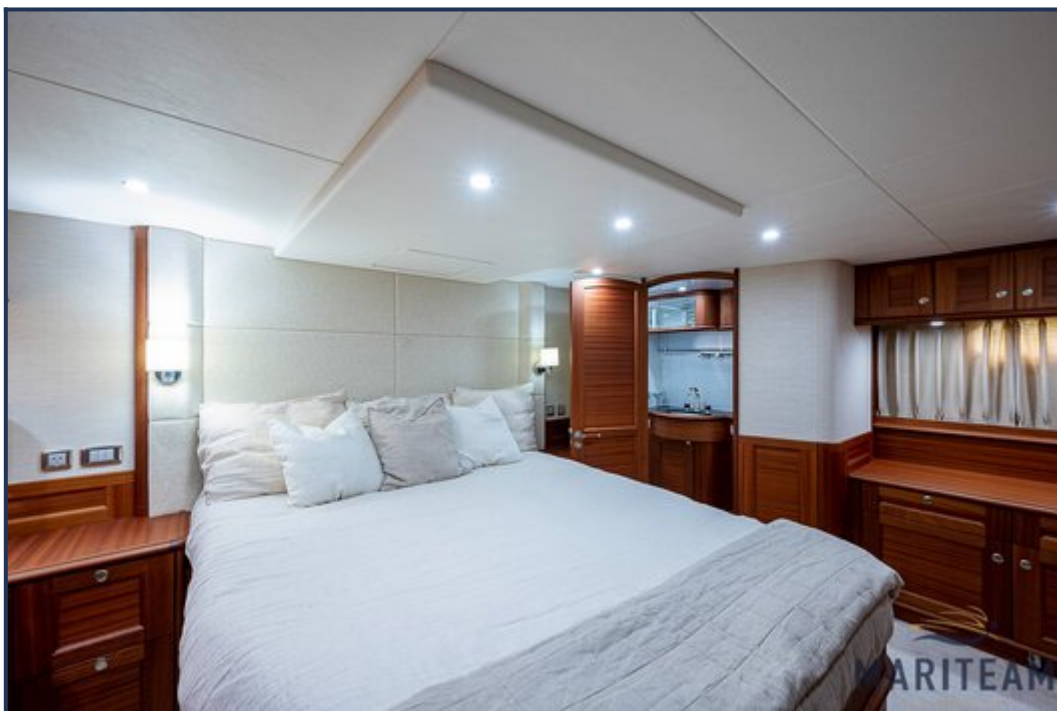




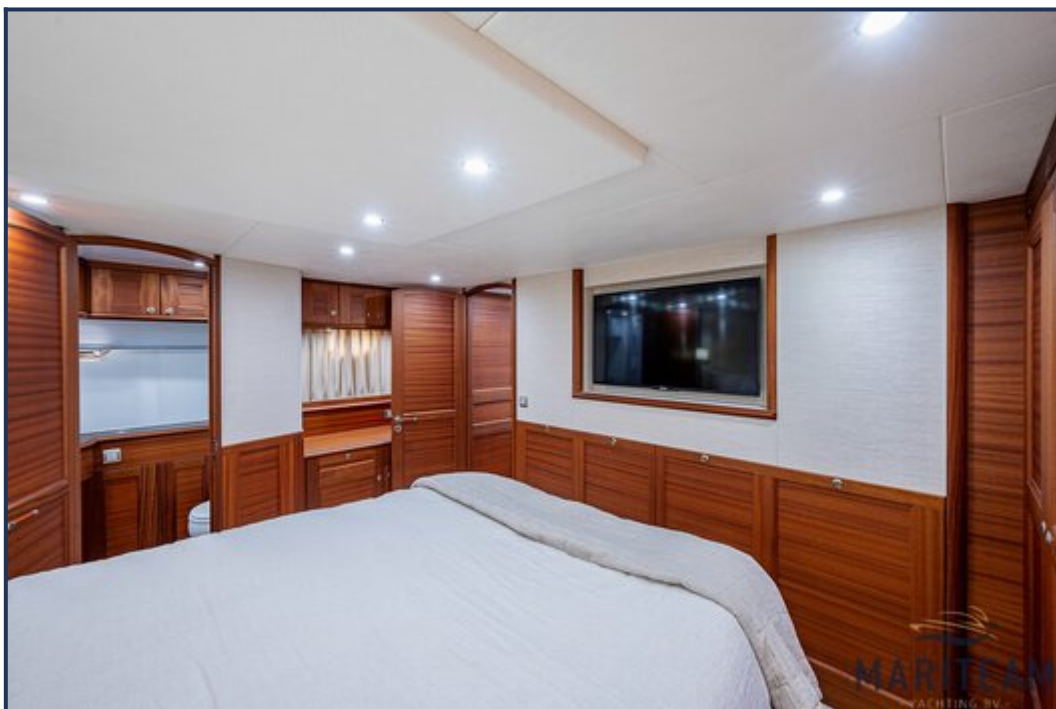




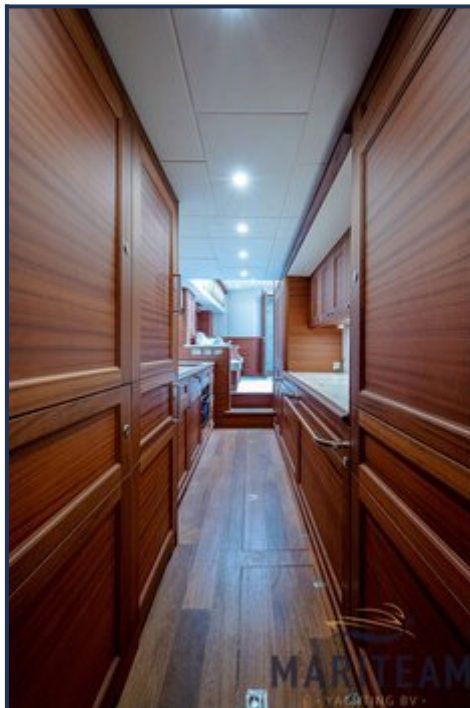




















These particulars are given in good faith as supplied but cannot be guaranteed and cannot be used for contracts.