



Eastbay 49 HX 'Lady Ellen'

| | |
|-------------|----------------------|
| LOA (m): | 15.22 m |
| Beam (m): | 4.87 m |
| Draft (m): | 1.32 m |
| Shipyard: | Grand Banks |
| Year built: | 2002 |
| Engines: | 2x 660hp Caterpillar |
| Cabins: | 3 |
| Homeport: | Service office, Heeg |
| Price: | € (not set) |

Eastbay 49 HX 'Lady Ellen' is a very well maintained ship with a highly sought after 3-cabin layout and big sunroof.

The 'Lady Ellen' is fully equipped with the powerful Caterpillar 660hp engines, bow and stern thruster, generator and new Raymarine navigation equipment.

As said before, she is in metacilous condition. Every winter she is stored in a heated hall, had annual technical maintenance, all the woodwork is varnished in 2019 and was recently fitted with new canvas covers.

This beautiful yacht is more than ready for a great new sailing season!

Main specifications

| | |
|-------------------------------|-----------------|
| Model: | Eastbay 49 HX |
| LOA (m): | 15.22 m |
| Beam (m): | 4.87 m |
| Draft (m): | 1.32 m |
| Year: | 2002 |
| Hull Material: | GRP |
| Cabins: | 3 |
| Sleeping places: | 6 |
| Number of main engine(s): | 2 |
| Power of main engine(s) (hp): | 660 |
| Brand of main engine(s): | Caterpillar |
| Price: | € (not set) |
| VAT status: | Paid |
| HIN number: | SG-GNDN0053B202 |

General

| | |
|-----------------------|-----------------------|
| Name : | Lady Ellen |
| Shipyard: | Grand Banks |
| Type: | Eastbay 49 HX |
| Length overall (m): | 15.22 |
| Length waterline (m): | 13.72 |
| Beam (m): | 4.87 |
| Air draft (m): | 4,8 mast up / 4m down |
| Year built: | 2002 |
| Displacement (t): | 20.5 |
| Hull material: | GRP |

| | |
|--------------------------|------|
| Deck material: | GRP |
| Superstructure material: | GRP |
| Deck finish: | Teak |
| Antifouling (Year): | 2020 |
| Maximum speed (Kn): | 30 |
| Cruising speed (Kn): | 20 |

Accommodation

| | |
|-----------------------|--------------|
| Stove: | Yes |
| Refrigerator: | 2, Coolmatic |
| Freezer: | 2 |
| Interior finish: | Teak |
| Single berths: | 4 |
| Double bed: | 1 |
| Cabins: | 3 |
| Toilets: | 1, new 2018 |
| Showers: | 1 |
| Outside shower: | 2 |
| Combi oven/microwave: | SanYo |

Machinery

| | |
|---|--|
| Port engine (Brand, type, hp, gearbox): | Caterpillar 3196 TA, 660 hp, Twin Disc |
| Drive (Shaft, IPS, Jet): | Shaft drive |
| Shaft lubrication: | Water |
| Prop (Number of blades, material): | 2x 5 blade |

| | |
|---|--|
| Star engine (Brand, type, hp, gearbox): | Caterpillar 3196 TA, 660 hp, Twin Disc |
| Generator (Brand, type, Kw): | Onan |
| Bowthruster (Brand, type, elec/hyd): | Sidepower SP155TC, 170/250 |
| Sternthruster (Brand, type, elec/hyd): | Yes |
| Electrical bilge pump: | 3 |
| Manual bilge pump: | 3 |
| Water pressure pump (Brand, model): | Yes |
| Hot water system: | Yes |
| Macerator pump: | Yes |
| Grey water tank pump: | Yes |
| Deckwash: | 1 |
| Engine hours engine 1: | 1171 |
| Engine hours engine 2: | 1176 |
| Generator hours: | 906 |

Electrical system

| | |
|--|------------|
| House battery (Number of battery,type, total Amp, year): | 2018 |
| Start battery (Number of battery,type, total Amp, year): | 2018 |
| Bowthruster battery (Number of battery,type, total Amp, year): | 2018 |
| Sternthruster battery (total Amp, year): | 2018 |
| DC system (V) AC system (V): | 12V / 220V |
| Battery charger (V/W/Amp): | 2018 |

Navigation system

| | |
|--------------|--|
| Compass: | Yes |
| Radar : | Raymarine RL80C (2018) |
| Depth meter: | Raymarine ST60 |
| VHF: | Ray Mike 60/70 |
| AIS: | Raymarine AIS 650 Class B Transceiver (2018) |
| Autopilot: | Raymarine (2018) |

Equipment

| | |
|-----------|-----|
| Anchor: | Yes |
| Windlass: | Yes |
| Horn: | Yes |































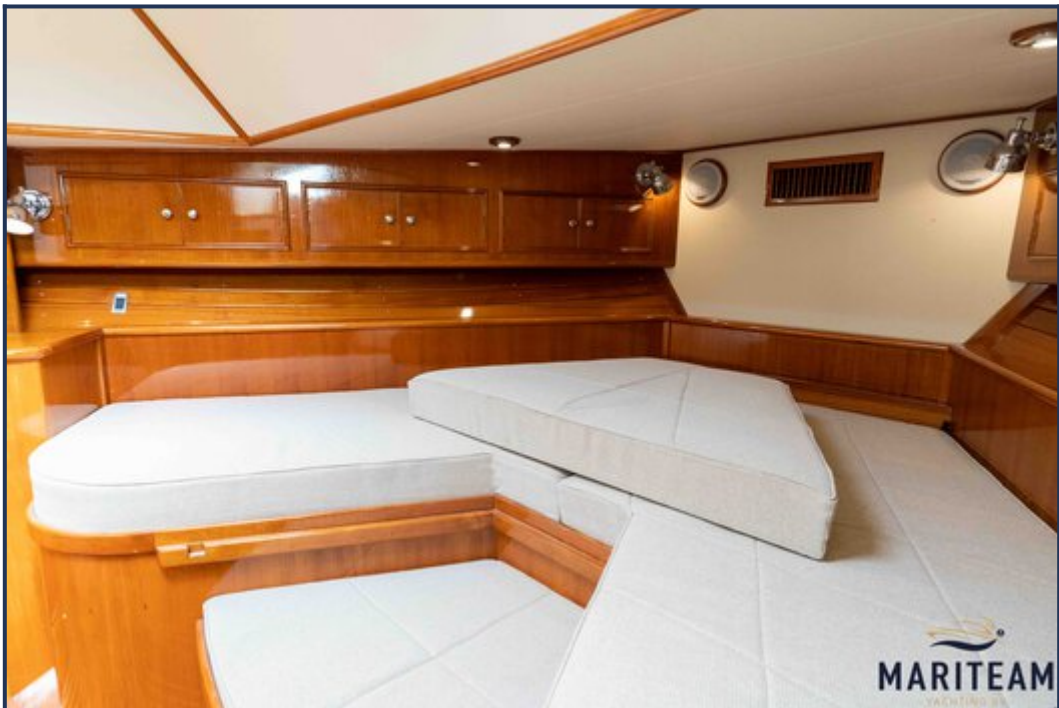


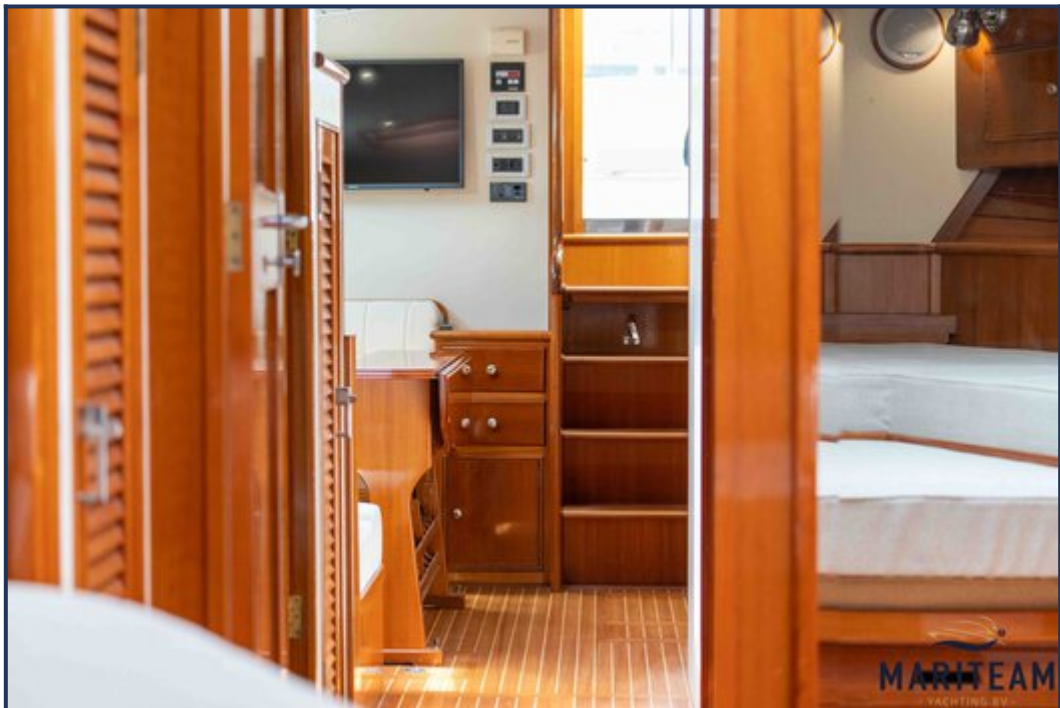










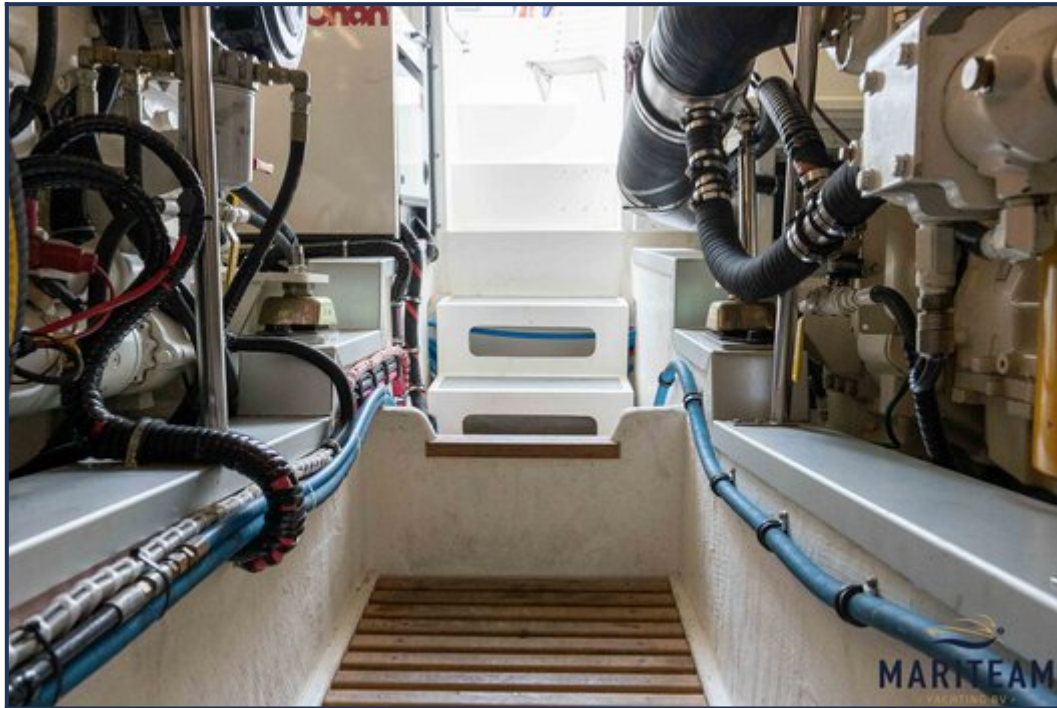












These particulars are given in good faith as supplied but cannot be guaranteed and cannot be used for contracts.