



Grand Banks 46 Classic 'Rupert the bear'

LOA (m):	14.35 m
Beam (m):	4.50 m
Draft (m):	1.33 m
Engines:	2x 375hp Caterpillar
Cabins:	3
Homeport:	The Netherlands
Price:	€ (not set)

Grand Banks 46 Classic 'Rupert the Bear' with hull number 130 - with highly sought after three-cabin version, powerful 375 hp Caterpillar engines, Kabola central heating, new Simrad navigation equipment with Halo radar and new dieseltanks.

Besides the fact that 'Rupert the Bear' has a very good layout, she also needs some time and attention. For example, the following activities must be taken into account:

- * Teak decks
- * Polishing and antifouling / rubbing and polishing
- * Paintwork of window frames (and possibly mirror and railing)

* Technical work in the engine room and, among other things, rewiring navigation equipment

Main specifications

Model:	46 Classic
LOA (m):	14.35 m
Beam (m):	4.50 m
Draft (m):	1.33 m
Year:	1992
Hull Material:	GRP
Cabins:	3
Sleeping places:	5
Number of main engine(s):	2
Power of main engine(s) (hp):	375
Brand of main engine(s):	Caterpillar
Price:	€ (not set)
VAT status:	Paid
HIN number:	GNDF0130H293

General

Name :	Rupert the bear
Shipyard:	American Marine
Air draft (m):	4.44
Displacement (t):	18
Hull material:	GRP
Deck material:	GRP
Superstructure material:	GRP
Deck finish:	Teak
Window material:	Laminated safety glass, single
Fuel tank (Litre and material):	6x RVS 2200 L (2013)

Freshwater Tank (Liter and material):	1077 L
Black water tank (Litre and material):	1x
Cruising speed (Kn):	8.5

Accommodation

Stove:	4 pits inductie, De Dietrich
Microwave:	national
Oven:	Bosch
Refrigerator:	1x Grunert
Freezer:	1x Grunert
Ice cubes maker:	1x
Interior finish:	Teak
Dish washer:	Bosch
Washing machine/Dryer:	LAVAMUT 2080
Single berths:	3 + 1
Double bed:	1
Cabins:	3x
Toilets:	2 X VACUFLUSH
Showers:	2x

Machinery

Port engine (Brand, type, hp, gearbox):	Caterpillar 3208 TA 375 PK, Twin Disc 507-1
Engine hours port engine:	1730
Star engine (Brand, type, hp, gearbox):	Caterpillar 3208 TA 375 PK, Twin Disc 507-1
Engine hours starboard engine:	1730

Main engines control (Brand and type):	Morse 4 hendel
Drive (Shaft, IPS, Jet):	Shaft drive
Shaft lubrication:	Waterlubricated
Prop (Number of blades, material):	4 blade
Generator (Brand, type, Kw):	Onan 6.5 Kw
Bowthruster (Brand, type, elec/hyd):	Hydraulics
Sternthruster (Brand, type, elec/hyd):	Sidepower electrisch
Electrical bilge pump:	2x rule
Manual bilge pump:	1x
Water presure pump (Brand, model):	1x
Hot water system:	Kabola KB 40
Heating system (brand, model, type):	Kabola KB 40
Trim system:	Bennet
Macerator pump:	1x
Steering system:	Mechanisch
Deckwash:	1x

Electrical system

DC system (V) AC system (V):	12V / 230V
Battery charger (V/W/Amp):	Sentry 50 A

Navigation system

Compass:	Ritchie
Gps plotter:	Simrad NSS 12 EVO 3
Radar screen:	Simrad NSS 12 EVO 3



Radar :	Simrad halo RI 12
Depth meter:	Simrad
Log:	Simrad
VHF:	Simrad RS35
AIS:	Simrad
Autopilot:	Simrad
Rudder indicator:	Simrad

Equipment

Anchor:	1x
Windlass:	1x
Tender crane:	Davits
Horn:	1x





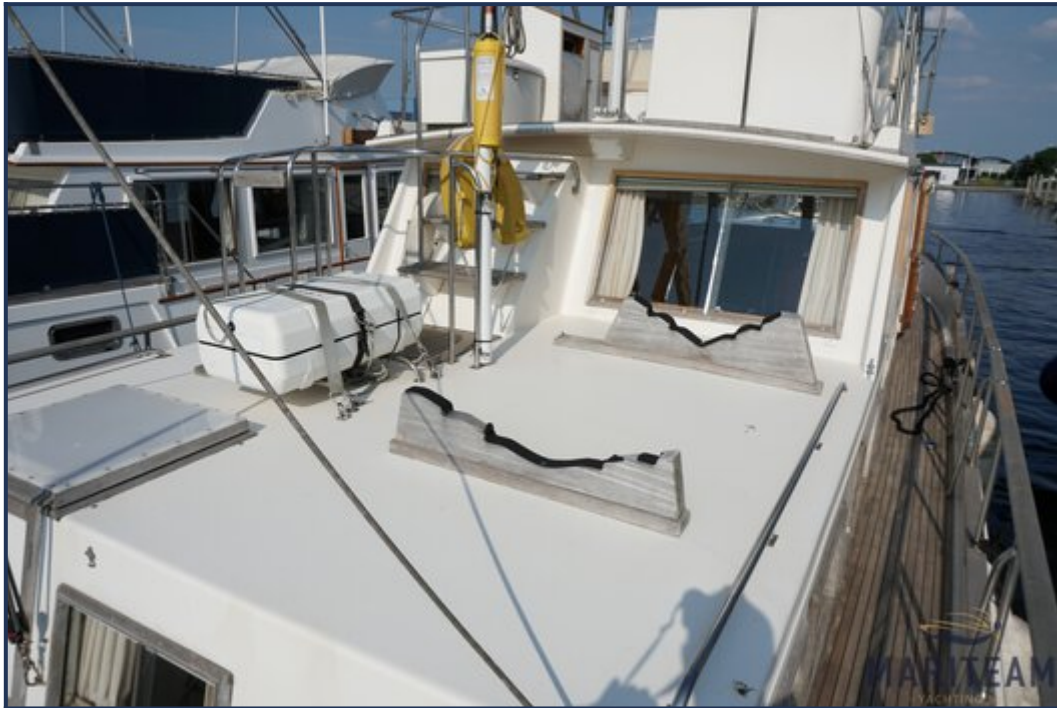






























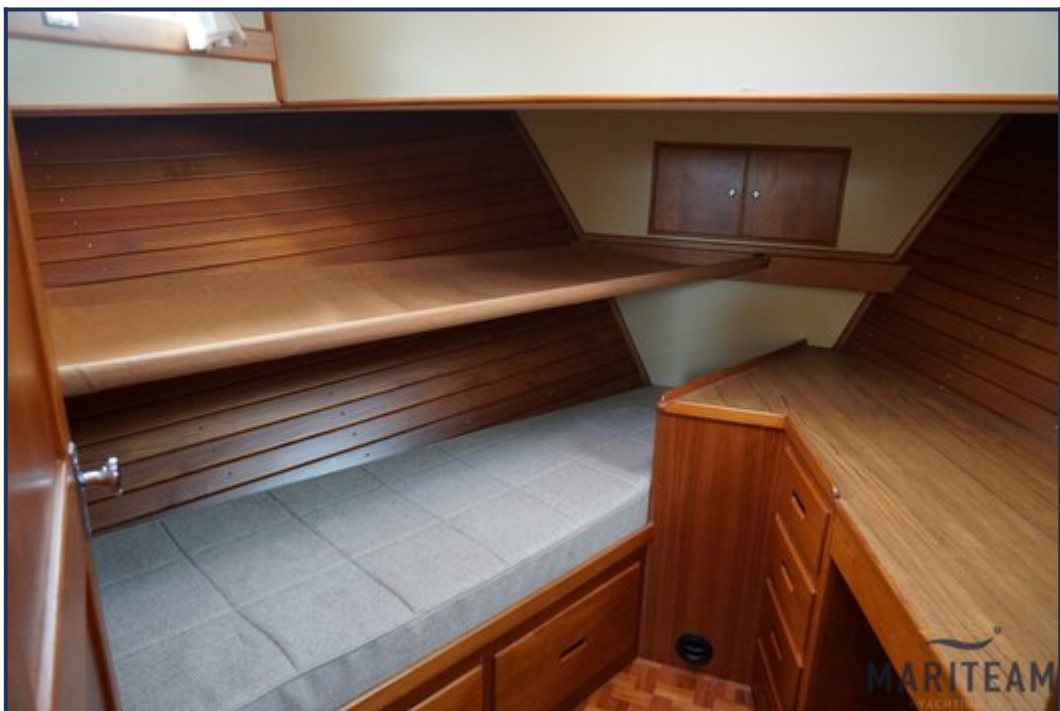
















These particulars are given in good faith as supplied but cannot be guaranteed and cannot be used for contracts.