



## Grand Banks 32 Classic 'NOOR'

LOA (m):	9.73 m
Beam (m):	3.50 m
Draft (m):	1.14 m
Shipyard:	American Marine
Year built:	1991
Engines:	1x 135hp Ford Lehman
Cabins:	1
Homeport:	Grou
Price:	€ (not set)

Grand Banks 32 Classic 'NOOR' with hull number 845. Uniquely beautiful, originally delivered Dutch, Grand Banks 32 from 1991.

With her 32 FT, 'Noor' has everything a Grand Banks can offer:

- Good sailing characteristics, which many larger ships will envy.

- Cozy lounge with the possibility of sleeping four thanks to the sofa bed.
- Spacious cockpit.
- Flybridge.

The ship has had major maintenance in 2020. The following issues have been addressed here.

- Railing stripped and provided with (8!) Layers of varnish.
- The ship is completely polished.
- Underwater hull sanded and provided with 7 layers of primer and new anti-fouling. This makes the underwater ship unprecedentedly sleek.
- Engine and gearbox fitted with new filters and fluids.
- New fabric outside.
- Mast repainted.
- New garmin plotter and garmin radar.
- Four new 180 AH battery's with mastervolt inverter 3000W.
- New start en bow thruster battery.



A unique Grand Banks 32 in a state where you can enjoy it right away!

**MARITEAM YACHTING**

Ceresweg 20-B, 8938 BG Leeuwarden 📍 The Netherlands 📞 Phone +31 (0) 582 889254  
[info@mariteamyachting.nl](mailto:info@mariteamyachting.nl) 📧 [www.mariteamyachting.nl](http://www.mariteamyachting.nl)

## Main specifications

Model:	32 Classic
LOA (m):	9.73 m
Beam (m):	3.50 m
Draft (m):	1.14 m
Year:	1991
Hull Material:	GRP
Cabins:	1
Sleeping places:	2
Number of main engine(s):	1
Power of main engine(s) (hp):	135
Brand of main engine(s):	Ford Lehman
Price:	€ (not set)
VAT status:	Paid
Draft (m):	1.14
HIN number:	GNDB0845A191

## General

Name :	Noor
Shipyard:	American Marine
Type:	32 Classic
Length overall (m):	9.73
Length waterline (m):	9.37
Beam (m):	3.5
Air draft (m):	3.5
Year built:	1991
Displacement (t):	8

Hull material:	GRP
Deck material:	GRP
Superstructure material:	GRP
Deck finish:	Teak
Window material:	Laminated safety glass, single
Fuel tank (Litre and material):	2x. 483 L Steel
Freshwater Tank (Liter and material):	416L Aluminium
Black water tank (Litre and material):	100 Plastic
Antifouling (Year):	2020 + anodes
Maximum speed (Kn):	10
Cruising speed (Kn):	7.5

## Accommodation

Stove:	ENO 2 pits
Oven:	ENO
Refrigerator:	Grunert
Freezer:	Grunert
Interior finish:	Teak
Single berths:	2x
Double bed:	1x
Cabins:	1x
Toilets:	1x
Showers:	1x
Outside shower:	1x

## Machinery

Port engine (Brand, type, hp, gearbox):	Ford Lehman 2725E, 135 PK
Main engines control (Brand and type):	Morse
Drive (Shaft, IPS, Jet):	Shaft drive
Shaft lubrication:	Waterlubricated
Prop (Number of blades, material):	4 blade
Bowthruster (Brand, type, elec/hyd):	Vetus elec
Electrical bilge pump:	1 x Rule
Manual bilge pump:	1x
Water pressure pump (Brand, model):	Johnson WPS 4.0
Hot water system:	45 Liter
Heating system (brand, model, type):	Eberspächer D4
Macerator pump:	1x
Steering system:	Mechanical
Engine hours engine 1:	3960

## Electrical system

House battery (Number of battery,type, total Amp, year):	4x 180 AH (Exide) 2020
Start battery (Number of battery,type, total Amp, year):	1x 75 AH (Yellow Top), 2020
Bowthruster battery (Number of battery,type, total Amp, year):	1x 50 AH (Red top), 2020
DC system (V) AC system (V):	12v/ 230
Inverter (V/W/Amp):	Combimaster 12V / 3000W / 100 AH (2020)
Battery charger (V/W/Amp):	Combimaster 12V / 3000W / 100 AH (2020)

## Safety system

Radar reflector:	1x
Gas detector:	1x

## Navigation system

Helm position one:	Salon
Compass:	Ritchie
Radar :	Garmin 18 HD+ (2020)
Depth meter:	DST 800
VHF:	Shipmate RS 8110
Autopilot:	Powerhelm
Helm position two:	Flybridge

## Equipment

Anchor:	27 KG
Horn:	1x elektrisch







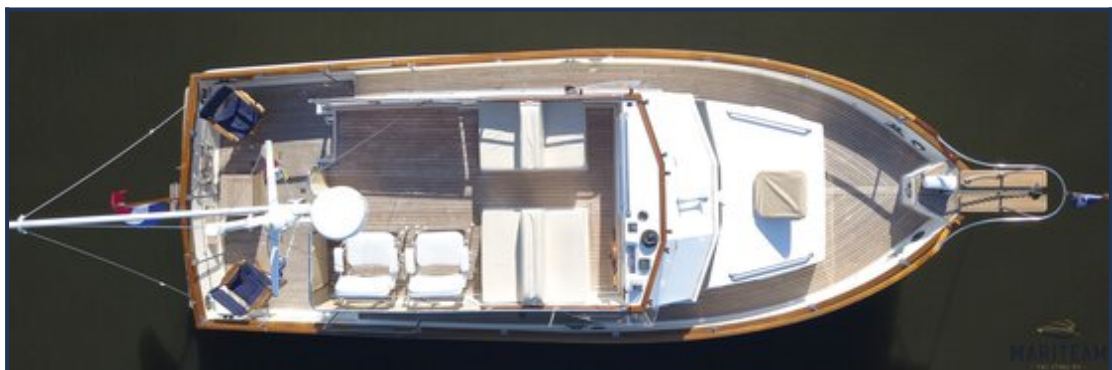


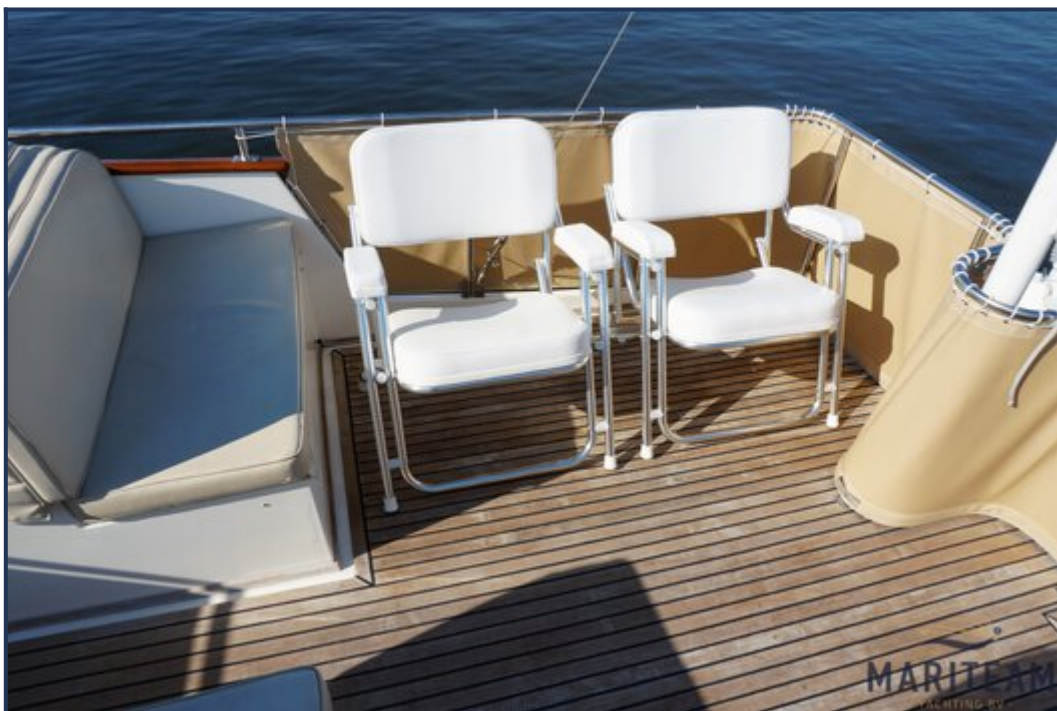






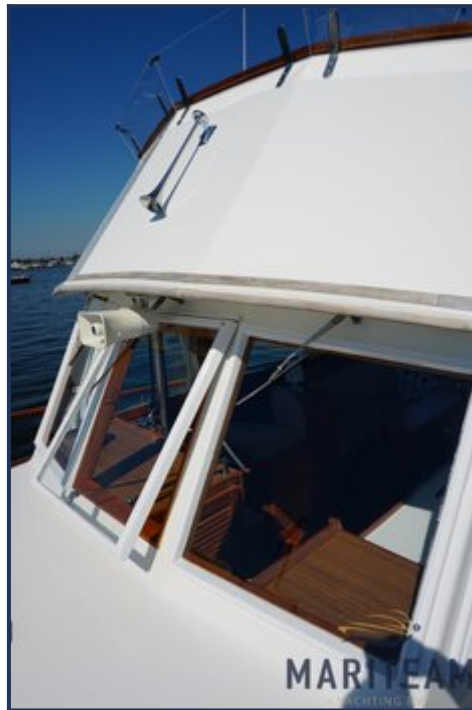


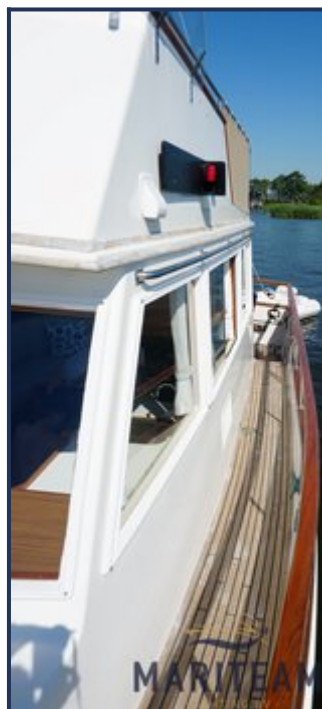




















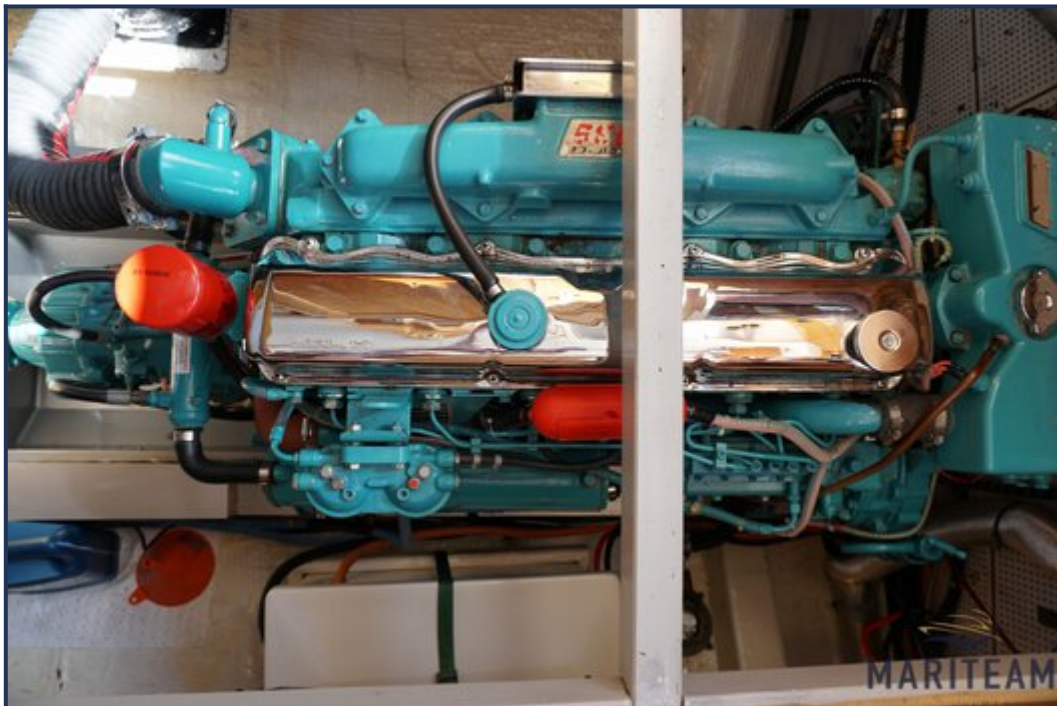


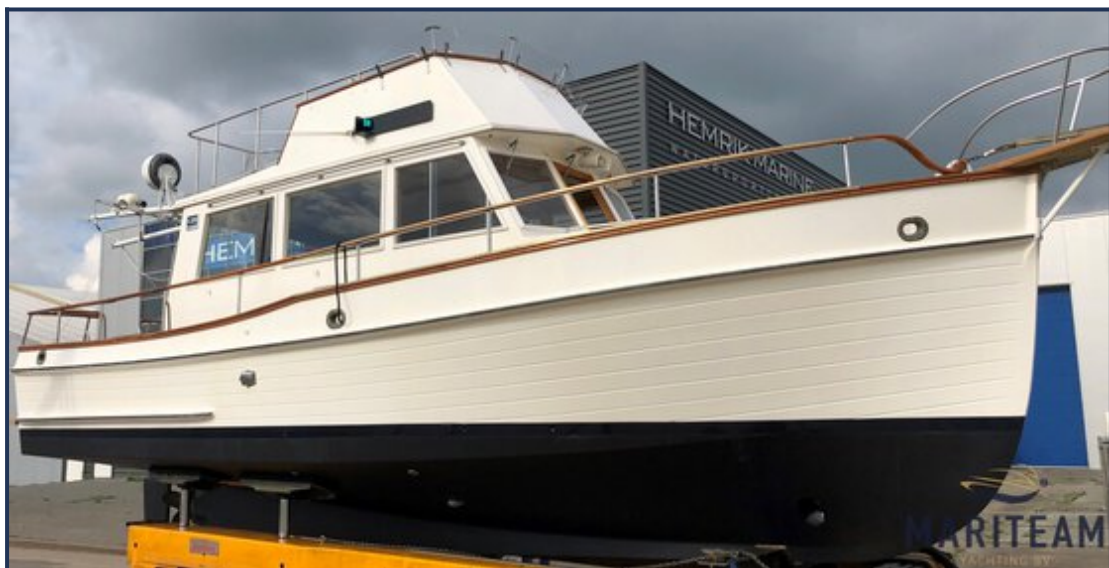


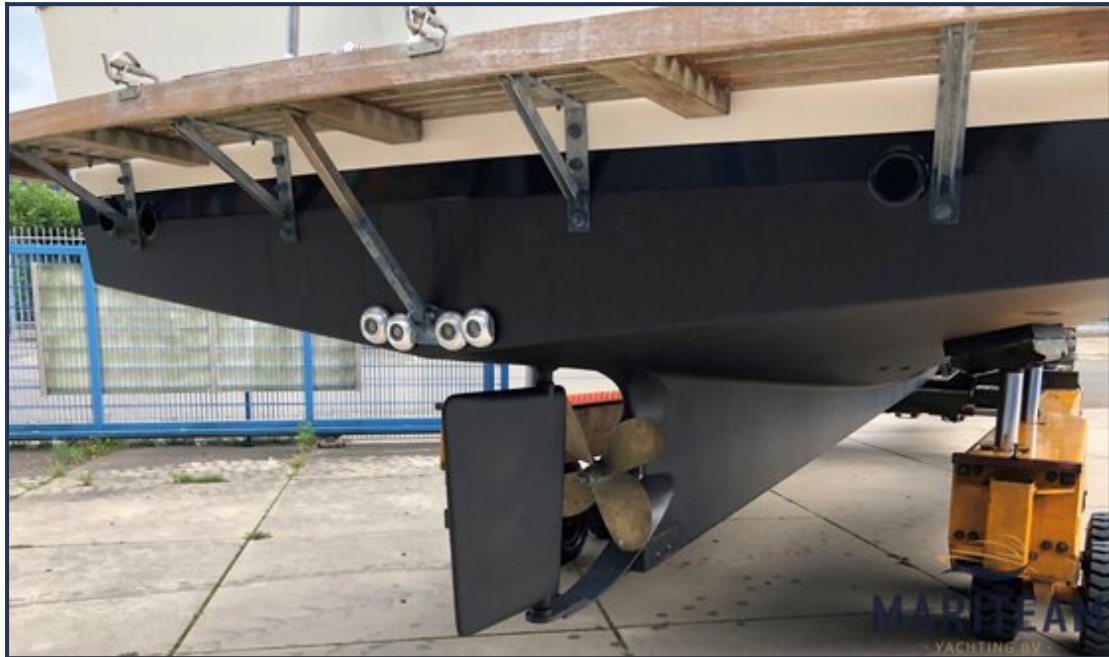












*These particulars are given in good faith as supplied but cannot be guaranteed and cannot be used for contracts.*