



Grand Banks 42 Motoryacht "Adagio"

LOA (m): 13.17 m

Beam (m): 4.29 m

Draft (m): 1.27 m

Engines: 1x 210hp Caterpillar

Cabins: 2

Homeport: Heeg

Price: € (not set)

Grand Banks 42 Motoryacht "Adagio" offers the chance to own a unique ship!

The unique features of "Adagio" include the galley down layout which provides extra living space in the saloon, and its single Caterpillar 210hp, which in turn provides a sought-after machine room layout.

Together with her very spacious owner's cabin makes the "Adagio" ideal for long stays on board and long journeys at home and abroad, just like the current owner has done with her.

"Adagio" is in a very neat condition, so "get on board and bon voyage!"

*** Trade-in considered**

Main specifications

Model:	42 Motoryacht
LOA (m):	13.17 m
Beam (m):	4.29 m
Draft (m):	1.27 m
Year:	2000
Hull Material:	GRP
Cabins:	2
Sleeping places:	4
Number of main engine(s):	1
Power of main engine(s) (hp):	210
Brand of main engine(s):	Caterpillar
Price:	€ (not set)
VAT status:	Paid
HIN number:	GNDD1460K000

General

Name :	Adagio
Shipyard:	Grand Banks Yachts
Air draft (m):	4.17
CE-category:	B
Displacement (t):	15.5
Hull material:	GRP
Deck material:	GRP
Superstructure material:	GRP
Deck finish:	Teak
Window material:	Single glass

Fuel tank (Litre and material):	2270L, steel
Freshwater Tank (Liter and material):	899L, steel
Black water tank (Litre and material):	Yes
Antifouling (Year):	2020 + anodes
Maximum speed (Kn):	11
Cruising speed (Kn):	8

Accommodation

Stove:	Princess Gourmet, 4 pits ceramic
Microwave:	Prima Donna
Oven:	Princess
Refrigerator:	2x Grunert
Freezer:	1
Interior finish:	Teak
Single berths:	2
Double bed:	1
Cabins:	2
Toilets:	2 vacuflush, electric
Showers:	2

Machinery

Engine hours port engine:	3500
Main engines control (Brand and type):	Panish controls
Drive (Shaft, IPS, Jet):	Shaft drive
Shaft lubrication:	Waterlubricated

Prop (Number of blades, material):	4 blade
Generator (Brand, type, Kw):	Northern Lights, 8 Kw
Generator hours:	2017
Bowthruster (Brand, type, elec/hyd):	Side power, electric
Sternthruster (Brand, type, elec/hyd):	Electric
Electrical bilge pump:	3, Rule
Manual bilge pump:	1, Whale gusher
Oil change system:	Groco
Water pressure pump (Brand, model):	Paragon junior
Hot water system:	Seaward, boiler 40L
Heating system (brand, model, type):	Marine Air csp 16K
Airconditioning system (Brand, model):	Marine Air csp 16K
Macerator pump:	Sealand T12VDC
Steering system:	Hydraulic
Deckwash:	1

Electrical system

House battery (Number of battery,type, total Amp, year):	3 (2018) + 1 for generator (2018)
Start battery (Number of battery,type, total Amp, year):	1 (2018)
DC system (V) AC system (V):	12 V / 220 V / 110 V just for airconditioning, fridge and freezer
Inverter (V/W/Amp):	Mastervolt
Battery charger (V/W/Amp):	Professional Mariner Promatic 50-3

Navigation system

Compass:	Ritchie
Depth meter:	B&G Network depth
Log:	B&G Network quad
VHF:	Icom
Autopilot:	Simrad Robertson AP22
Rudder indicator:	VDO

Equipment

Anchor:	Suncor plowmaster 45 lbs.
Windlass:	Lofrans Tigres 1000W
Search light:	ACR
Horn:	kahlenberg































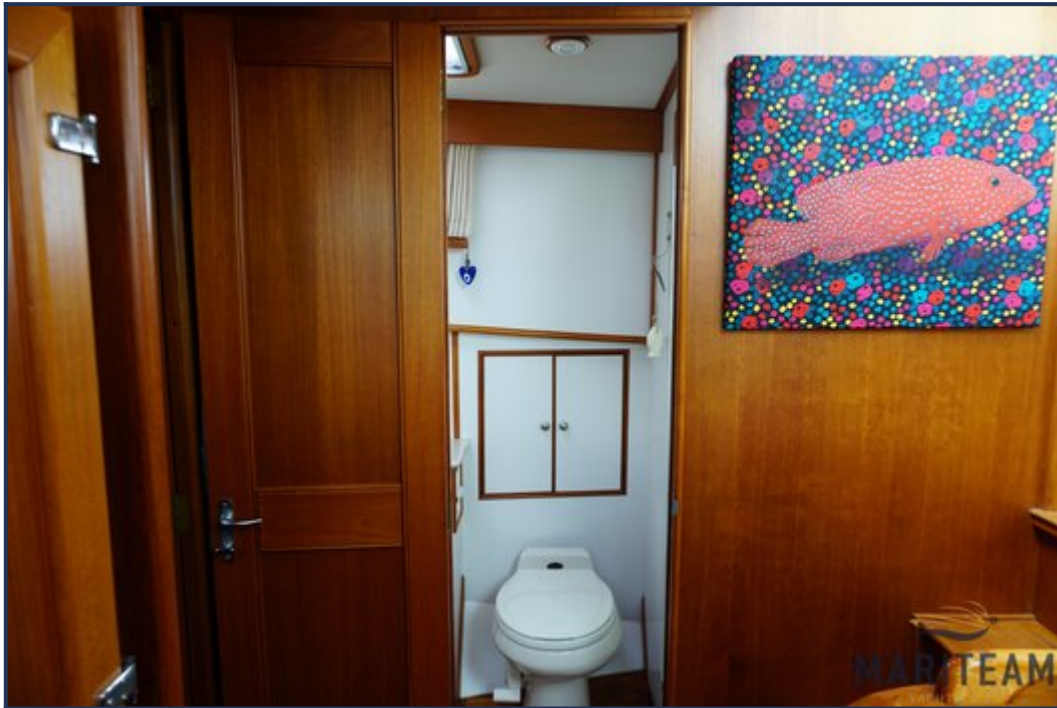






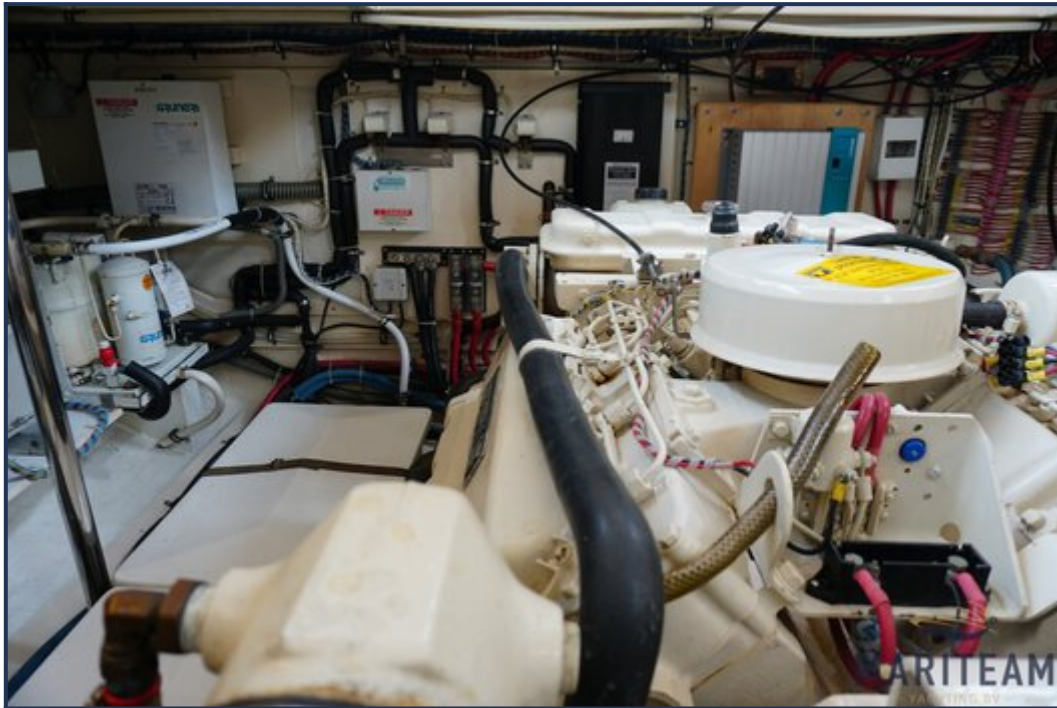


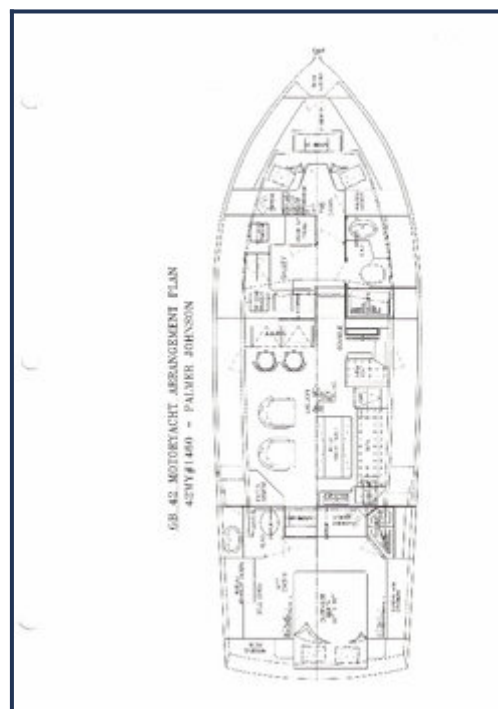












These particulars are given in good faith as supplied but cannot be guaranteed and cannot be used for contracts.