



MARITEAM

- YACHTING -



Valk Alu Sportief 48 pilot "Seaquest"

LOA (m):	14.90 m
Beam (m):	4.20 m
Draft (m):	1.38 m
Engines:	2x 370hp Yanmar
Cabins:	2
Homeport:	Sales office
Price:	€ (not set)

A unique opportunity - one of the 5 built Valk Alu Sportief pilot's, the beautiful 48 footer "Seaquest" is now on the market - the ideal combination between a classic, sporty and maximum comfort.

Dutch quality is paramount in this practical and well thought-out ship, no detail has been overlooked. Developed and built in-house by P. Valk Franeker, one of the best known and oldest Dutch shipyards. The round bilge hull and superstructure of the "Seaquest" is full aluminum and has the CE-classification A. She also stands out because of the very low noise level, which is a relief during long journeys!

Are you looking for a tough, sporty, classic and extremely strong ship which can also beaching? Then the Valk Alu Sportief 48 Pilot "Seaquest" may be the perfect match!

MARITEAM YACHTING

De Draei 29, 8621 CZ Heeg 📍 The Netherlands 📞 Phone +31 (0) 582 889254

info@mariteamyachting.nl 📧 www.mariteamyachting.nl

Main specifications

Model:	Alu Sportief 48 pilot
LOA (m):	14.90 m
Beam (m):	4.20 m
Draft (m):	1.38 m
Year:	2005
Hull Material:	Aluminium
Cabins:	2
Sleeping places:	4
Number of main engine(s):	2
Power of main engine(s) (hp):	370
Brand of main engine(s):	Yanmar
Price:	€ (not set)
VAT status:	Paid
HIN number:	NLVAF4872D504

General

Name :	Seaquest
Shipyard:	P. Valk Franeker
CE-category:	A
Cruising speed (Kn):	19
Maximum speed (Kn):	24
Air draft (m):	3.25
Displacement (t):	16
Fuel tank (Litre and material):	1650L, aluminium
Freshwater Tank (Liter and material):	790L, SS
Black water tank (Litre and material):	120L, PVC

Grey water tank (Litre and material):	250L, PVC
Hull material:	Aluminium
Superstructure material:	Aluminium
Deck finish:	Teak
Interior finish:	Teak
Window ventilation:	Yes
Antifouling (Year):	2019

Accommodation

Cabins:	2
Double bed:	2
Single berths:	2
Showers:	1
Toilets:	1, electric
Heating system (brand, model, type):	Eberspächer, 5 Kw, hot air + Whisper, 5 Kw
Airconditioning system (Brand, model):	No
Stove:	SMEV, 3 pitt, gas
Oven:	DeLonghi
Microwave:	Sharp
Refrigerator:	Isotherm
Freezer:	Isotherm
Washing machine:	Candy aquamatic

Machinery

Main engines control (Brand and type):	Morse
--	-------

Port engine (Brand, type, hp, gearbox):	Yanmar 6LYA-STP, 370 hp, Twin Disc
Engine hours port engine:	2400
Star engine (Brand, type, hp, gearbox):	Yanmar 6LYA-STP, 370 hp, Twin Disc
Engine hours starboard engine:	2400
Steering system:	Hydraulic
Drive (Shaft, IPS, Jet):	Shaft drive
Shaft lubrication:	Fat
Prop (Number of blades, material):	2x 4 blade
Generator (Brand, type, Kw):	Whisper Gen (combi warmth/electra)
Generator hours:	800
Bowthruster (Brand, type, elec/hyd):	Vetus, 160 kgf, with remote control
Water pressure pump (Brand, model):	Yes
Grey water tank pump:	Yes
Hot water system:	Boiler
Macerator pump:	Yes
Trim system:	Bennett

Electrical system

DC system (V) AC system (V):	12V/220V
Battery charger (V/W/Amp):	Victron Multiplus, 50 Amp
Inverter (V/W/Amp):	Victron Multiplus, 3000w, 70 Amp
House battery (Number of battery,type, total Amp, year):	6x AGM 105 Amp (2018)
Start battery (Number of battery,type, total Amp, year):	2x Optima 60 Amp

Safety system

Electrical bilge pump:	6x
Fire extinguisher engine room:	yes, automatic
High water alarm:	Yes
Search light:	Jabsco 62040
Horn:	Yes

Navigation system

Compass:	Simrad RC36
Radar :	Simrad RS4050
Autopilot:	Simrad AP25 + remote control WR20 wireless
Depth meter:	Simrad IS 15
VHF:	Simrad RS87
AIS:	No

Equipment

Anchor:	Yes
Windlass:	Yes
Deckwash:	Yes















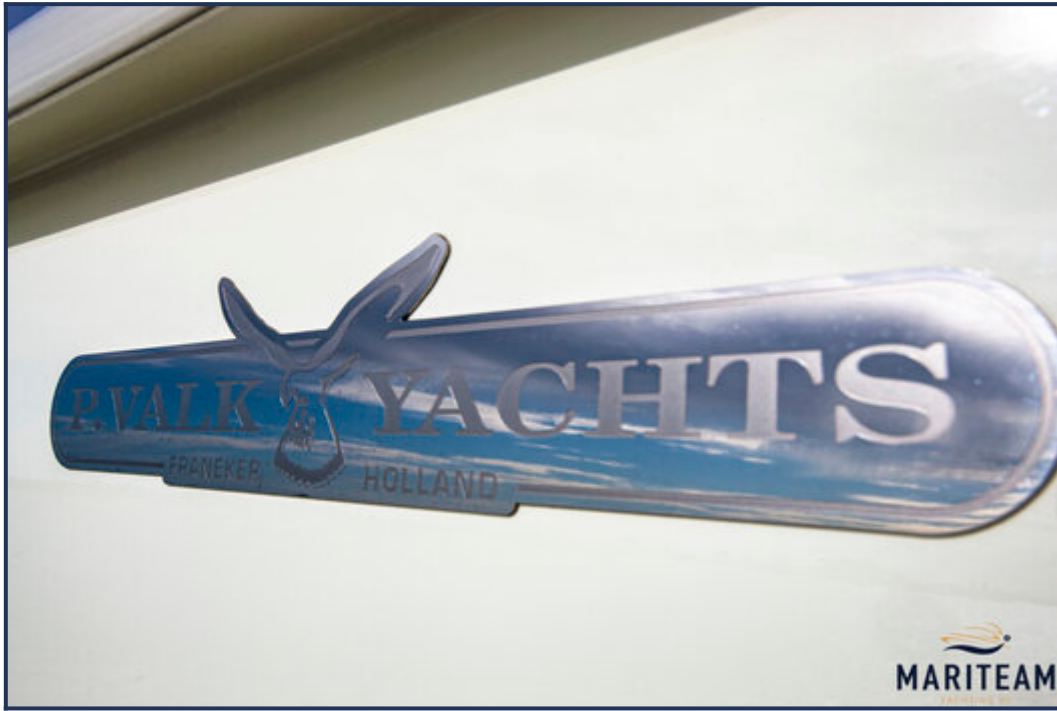










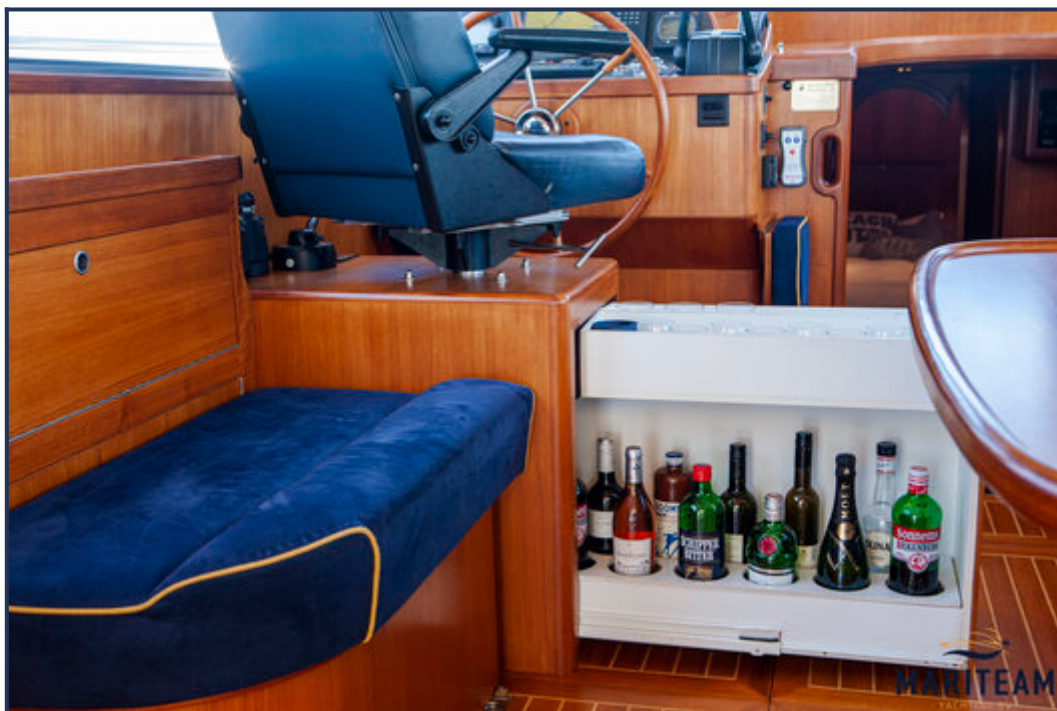




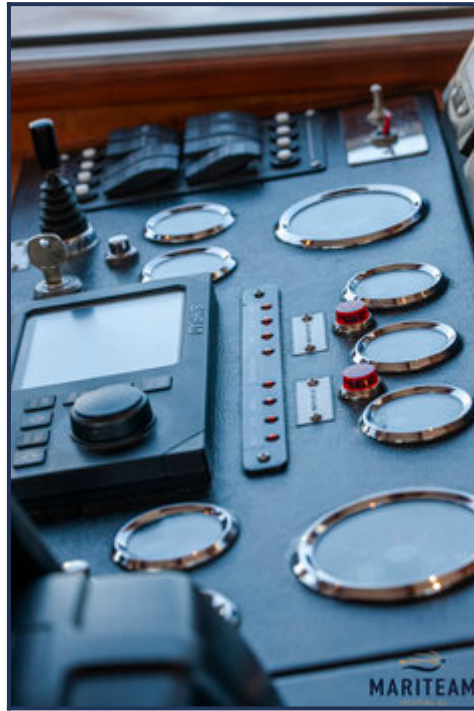
















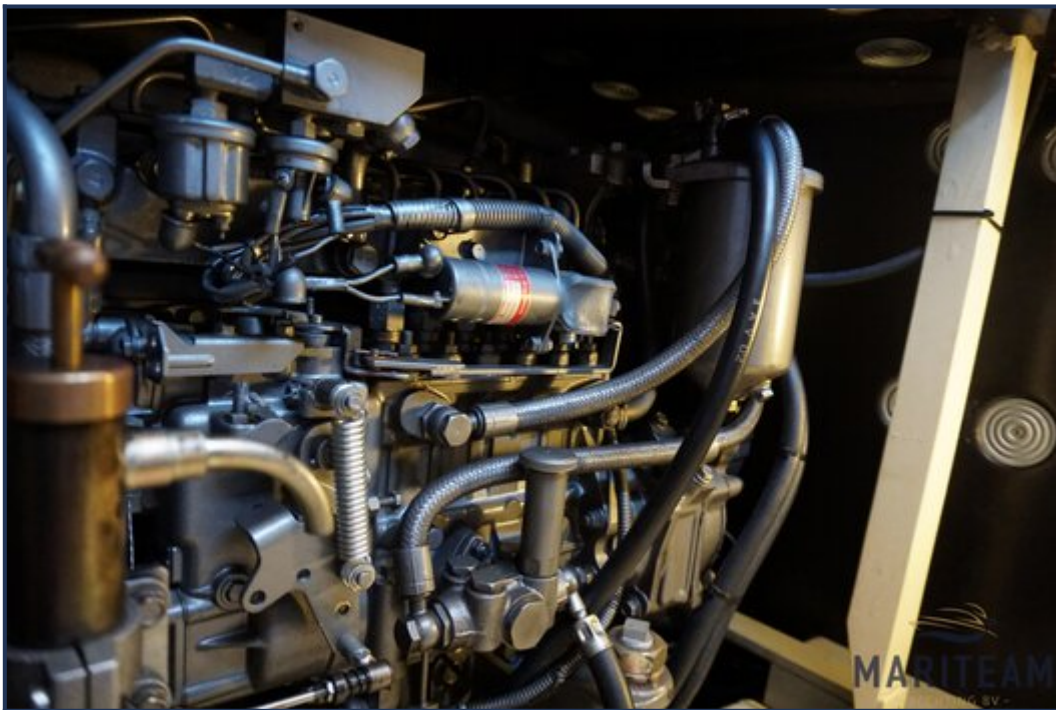
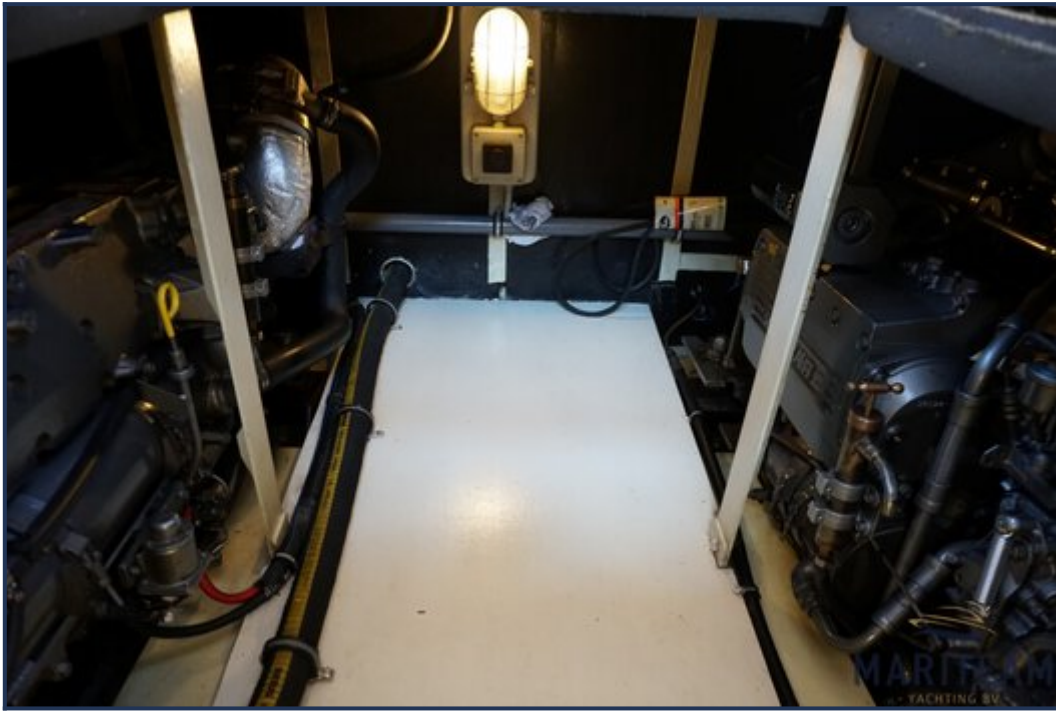




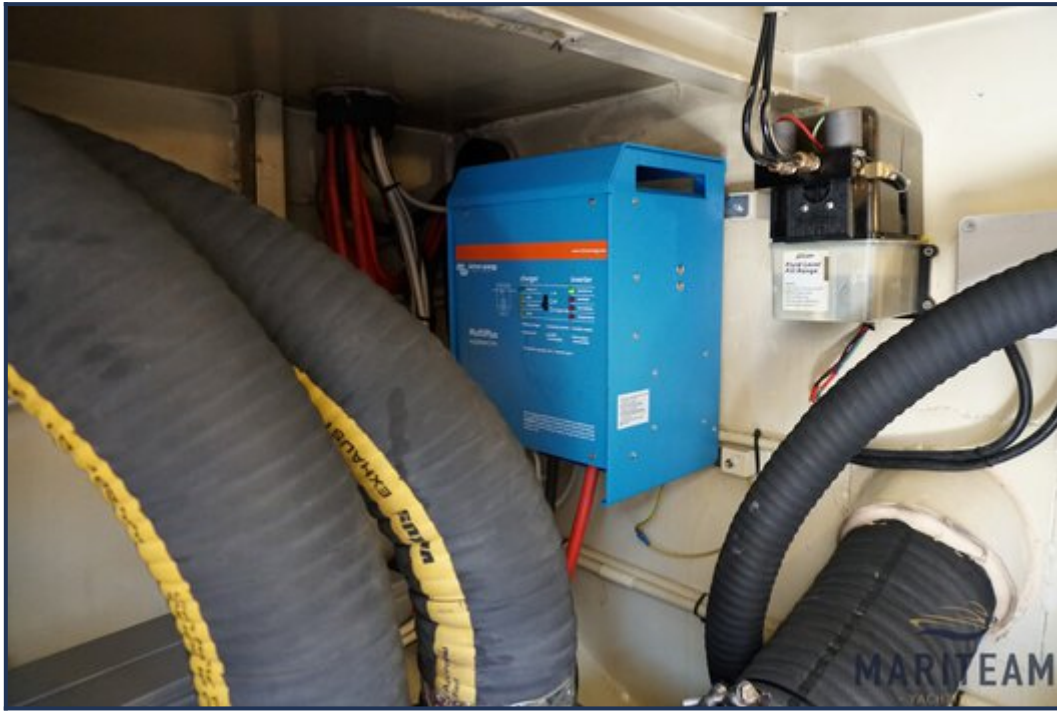














These particulars are given in good faith as supplied but cannot be guaranteed and cannot be used for contracts.