



# MARITEAM

- YACHTING -



## Grand Banks 42 Europa 'Bubbels'

LOA (m):	13.17 m
Beam (m):	4.29 m
Draft (m):	1.27 m
Engines:	2x 425hp Caterpillar
Cabins:	2
Homeport:	Port Grimaud, FR
Price:	€ (not set)

The popular "Europa" model of the Grand Banks yacht is in high demand for its covered side decks and direct access to the aft deck, adding an extra dimension to the salon. Inside, it features a spacious L-shaped sofa, cozy chairs, a well-equipped kitchen, and a bathroom with an electric toilet and shower. The yacht has a guest cabin and an owner's cabin with a double bed. Powered by two 425 hp Caterpillar engines, it can reach a top speed of 18 knots. In 2021, it underwent extensive servicing, including new paintwork, antifouling, and engine maintenance.

### MARITEAM YACHTING

De Draei 29, 8621 CZ Heeg 📍 The Netherlands 📞 Phone +31 (0) 582 889254  
[info@mariteamyachting.nl](mailto:info@mariteamyachting.nl) 🌐 [www.mariteamyachting.nl](http://www.mariteamyachting.nl)

## Main specifications

Model:	42 Europa
LOA (m):	13.17 m
Beam (m):	4.29 m
Draft (m):	1.27 m
Year:	2002
Hull Material:	GRP
Cabins:	2
Sleeping places:	4
Number of main engine(s):	2
Power of main engine(s) (hp):	425
Brand of main engine(s):	Caterpillar
Price:	€ (not set)
VAT status:	Paid
HIN number:	MS-GNDD1518A203

## General

Name :	Bubbels
Shipyard:	Grand Banks
CE-category:	A
Hull material:	GRP
Deck material:	GRP
Superstructure material:	GRP
Deck finish:	Teak
Antifouling (Year):	Copperbot
Maximum speed (Kn):	18
Cruising speed (Kn):	12

## Accommodation

Stove:	Electric
Microwave:	Sharp
Oven:	Yes
Refrigerator:	Isotherm
Freezer:	Yes
Interior finish:	Teak
Double bed:	2x
Cabins:	2x
Toilets:	1x
Showers:	1x

## Machinery

Port engine (Brand, type, hp, gearbox):	Caterpillar 3126B, 425 Hp, Twin disc
Engine hours port engine:	+/- 2000
Star engine (Brand, type, hp, gearbox):	Caterpillar 3126B, 425 Hp, Twin disc
Engine hours starboard engine:	+/- 2000
Drive (Shaft, IPS, Jet):	Shaft drive
Prop (Number of blades, material):	4 blade
Generator (Brand, type, Kw):	Onan
Bowthruster (Brand, type, elec/hyd):	Yes
Sternthruster (Brand, type, elec/hyd):	Yes
Electrical bilge pump:	Yes
Manual bilge pump:	Yes
Water pressure pump (Brand, model):	Jabsco

Hot water system:	Yes
Heating system (brand, model, type):	Webasto
Macerator pump:	Yes
Deckwash:	1x

## Electrical system

House battery (Number of battery,type, total Amp, year):	2018
Start battery (Number of battery,type, total Amp, year):	2018
DC system (V) AC system (V):	12V/220V
Battery charger (V/W/Amp):	Yes

## Safety system

Fire extinguisher engine room:	Yes
High water alarm:	Yes
Radar reflector:	Yes

## Navigation system

Compass:	Silva
Gps plotter:	Raymarine E120
Radar screen:	Raymarine
Radar :	Raymarine
Depth meter:	Raymarine
Log:	Raymarine

VHF:	Raymarine Ray 54E
AIS:	Raymarine
Autopilot:	Raymarine ST6001
Rudder indicator:	Raymarine

## Equipment

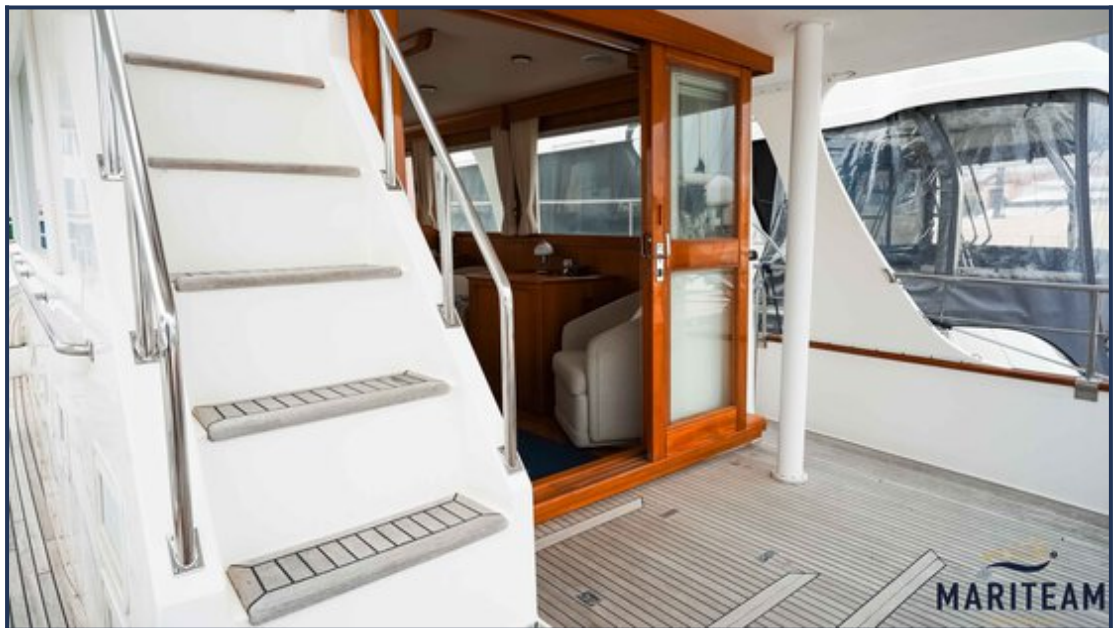
Anchor:	Yes
Windlass:	Lofrans Tigres
Tender crane:	Yes
Tender:	Avon rib
Search light:	Yes
Horn:	Yes

















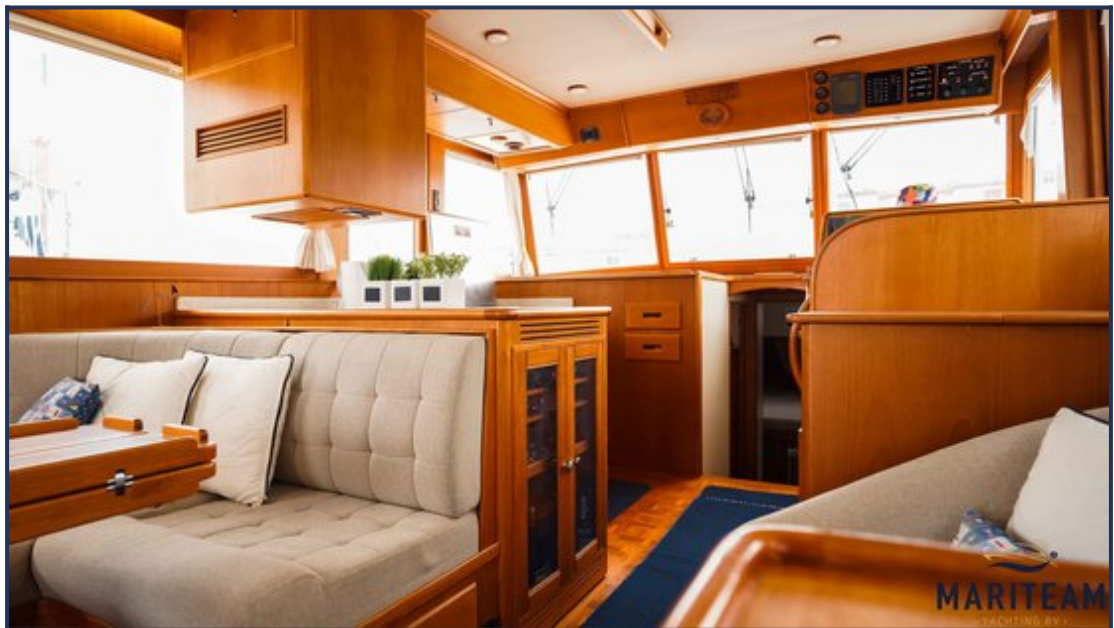












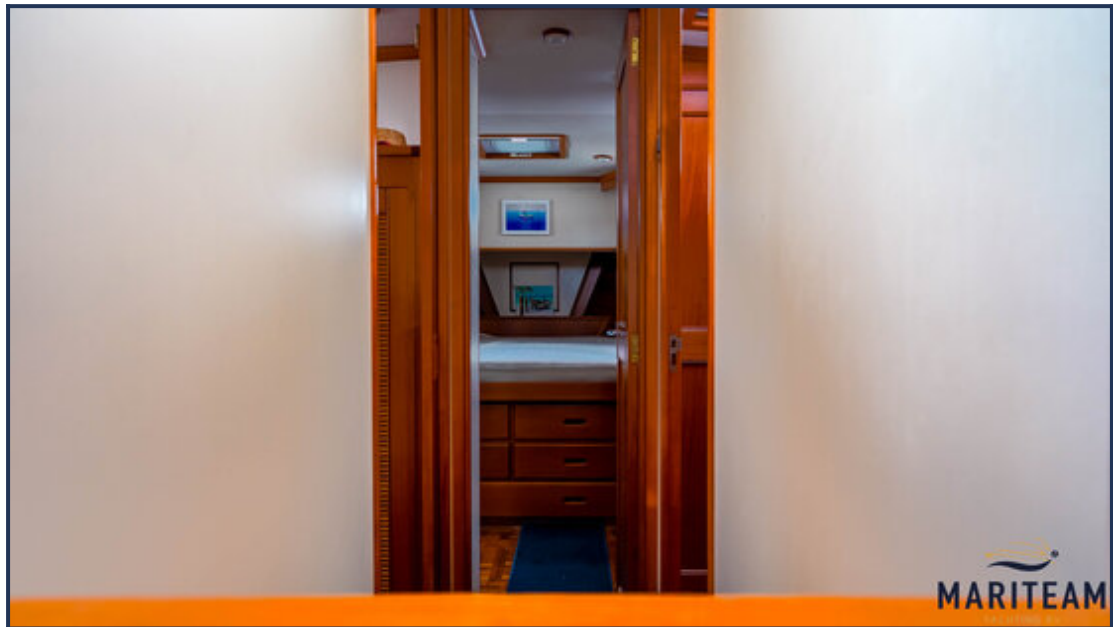




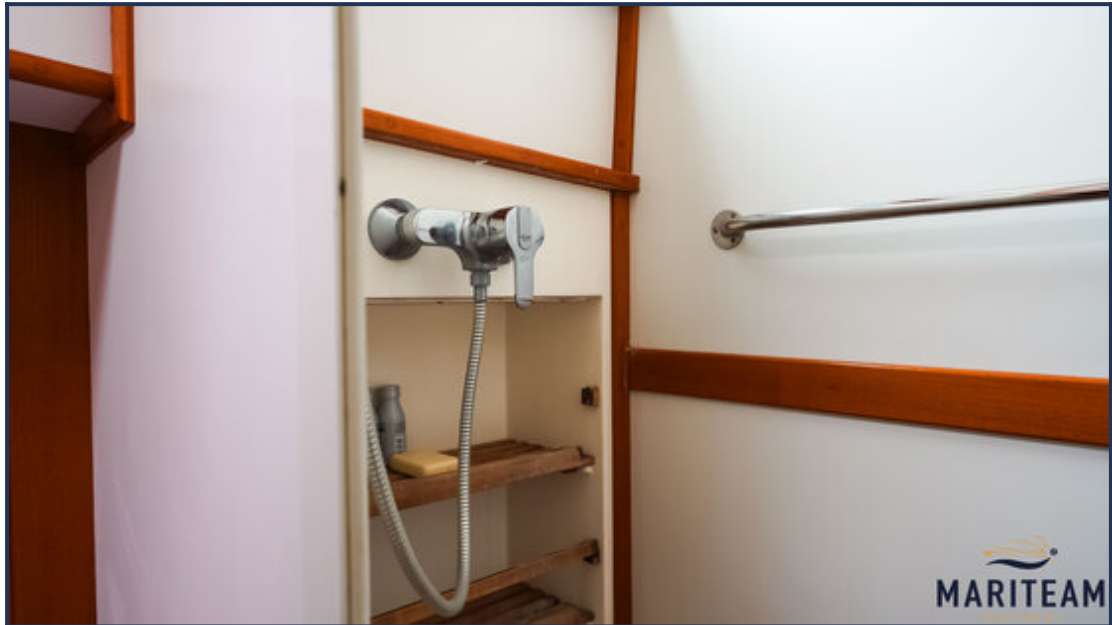






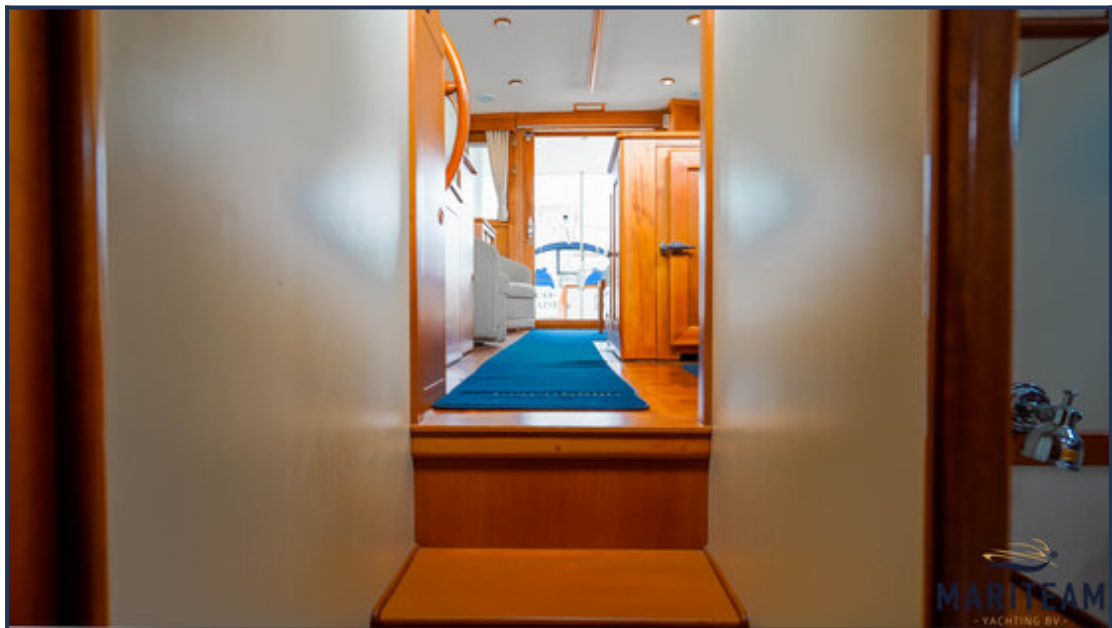




























*These particulars are given in good faith as supplied but cannot be guaranteed and cannot be used for contracts.*