



## Eastbay 38 EX 'Inspiration'

LOA (m):	12.45 m
Beam (m):	4.01 m
Draft (m):	1.18 m
Engines:	2x 435hp Caterpillar
Cabins:	1
Homeport:	At sales office
Price:	€ (not set)

Grand Banks Eastbay 38 EXPRESS, beautiful fast sailing ship with convertible top and large open cockpit.

The ship has two caterpillar engines and a powerful sidepower bow thruster, which allows the ship to sail beautifully.

In the front of the ship there are two beds that can be transformed into one large bed. In the salon there is a dinette that can be transformed into a double bed. The kitchen is equipped with a microwave, gas oven and 4-burner gas stove and lots of storage space. The wet room is equipped with an electric toilet and a nice shower.

In 2019 the ship was completely polished, teak decks rubbered, paintwork repainted outside, new Victron inverter / battery charger installed, new Raymarine VHF radio with AIS receiver, new Raymarine depth / speed meter, the engines and generator had a major service and new fuel filters were installed. The ship is ready to sail!



# MARITEAM

- YACHTING -

## MARITEAM YACHTING

De Draei 29, 8621 CZ Heeg 📍 The Netherlands 📞 Phone +31 (0) 582 889254  
[info@mariteamyachting.nl](mailto:info@mariteamyachting.nl) 🌐 [www.mariteamyachting.nl](http://www.mariteamyachting.nl)

## Main specifications

Model:	Eastbay 38
LOA (m):	12.45 m
Beam (m):	4.01 m
Draft (m):	1.18 m
Year:	2000
Hull Material:	GRP
Cabins:	1
Sleeping places:	4
Number of main engine(s):	2
Power of main engine(s) (hp):	435
Brand of main engine(s):	Caterpillar
Price:	€ (not set)
VAT status:	VAT paid
HIN number:	MS-GNDH0089B000

## General

Name :	Inspiration
Shipyard:	Grand Banks
CE-category:	B
Displacement (t):	11.6
Hull material:	GRP
Deck material:	GRP
Superstructure material:	GRP
Deck finish:	Teak
Window material:	Single
Fuel tank (Litre and material):	1302 L Aluminium

Freshwater Tank (Liter and material):	359 L Aluminium
Black water tank (Litre and material):	120 L GRP
Maximum speed (Kn):	27

## Accommodation

Stove:	Princess 3372-1002
Microwave:	Sharp 248A
Oven:	Princess 3372-1002
Refrigerator:	Waeco MDC110
Freezer:	Waeco MDC110 vriesvak
Interior finish:	Teak
Single berths:	2x
Double bed:	1x
Cabins:	1
Toilets:	1x elektrisch, Groco type K
Showers:	1x

## Machinery

Port engine (Brand, type, hp, gearbox):	Caterpillar 3208 TA, 435 PK, Twin Disc MG 5061-A
Engine hours port engine:	1219
Star engine (Brand, type, hp, gearbox):	Caterpillar 3208 TA, 435 PK, Twin Disc MG 5061-A
Engine hours starboard engine:	1216
Main engines control (Brand and type):	Two handle
Drive (Shaft, IPS, Jet):	Schaft
Shaft lubrication:	Waterlubricated

Prop (Number of blades, material):	5 blade
Generator (Brand, type, Kw):	Onan MDKAL-3366475, 7 KW,
Generator hours:	172
Bowthruster (Brand, type, elec/hyd):	Sidepower SP 85, Electisch
Electrical bilge pump:	3x Rule 2000
Oil change system:	Groco BMX3-60
Water pressure pump (Brand, model):	Paragon Junior PJR
Hot water system:	Seaward S1200, 42 Liter
Heating system (brand, model, type):	Webasto Airtop 5000, 5KW
Trim system:	Bennett trimtab 3812
Macerator pump:	Sealand T 12VDC
Steering system:	Hydrailisch
Deckwash:	1x

## Electrical system

DC system (V) AC system (V):	12V/230V
Inverter (V/W/Amp):	Victron 12V/2000W/80AMP
Battery charger (V/W/Amp):	Victron 12V/2000W/80AMP

## Safety system

Fire alarm:	1x
-------------	----

## Navigation system

Compass:	Ritchie
----------	---------

Depth meter:	Raymairne i70
VHF:	Raymarine Ray 70
AIS:	Onvanger Raymarine
Autopilot:	Raytheon ST6001+

## Equipment

Windlass:	Maxwell RC-80
Horn:	1x elektrisch





















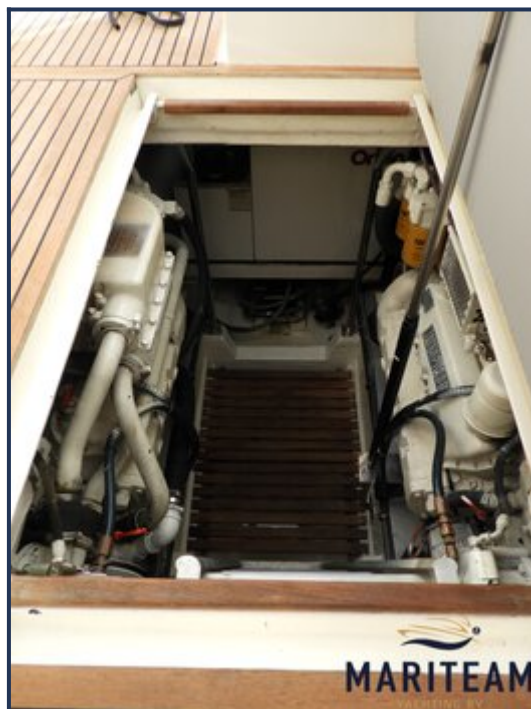




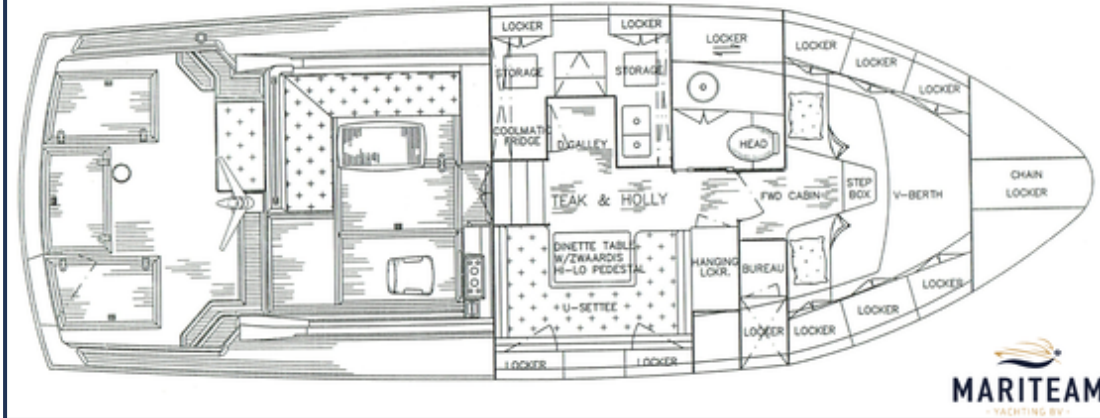








EASTBAY 38 ARRANGEMENT LAYOUT  
38EB#0089



*These particulars are given in good faith as supplied but cannot be guaranteed and cannot be used for contracts.*