



Grand Banks 49 Motoryacht 'Hans im Glück III'

| | |
|-------------|----------------------|
| LOA (m): | 15.39 m |
| Beam (m): | 4.70 m |
| Draft (m): | 1.6 m |
| Shipyard: | American Marine |
| Year built: | 1985 |
| Engines: | 2x 355hp Caterpillar |
| Cabins: | 4 |
| Homeport: | Sardinia |
| Price: | € (not set) |

Grand Banks 49 Motoryacht 'Hans im Glück' with hull number 56.

Originally built as Jumbo IV and is now being marketed by the 2nd owner. A very spacious boat with 4 cabins and 3 bathrooms.



MARITEAM

- YACHTING -

MARITEAM YACHTING

Ceresweg 20-B, 8938 BG Leeuwarden 📍 The Netherlands 📞 Phone +31 (0) 582 889254
info@mariteamyachting.nl 📧 www.mariteamyachting.nl

Main specifications

| | |
|-------------------------------|---------------|
| Model: | 49 Motoryacht |
| LOA (m): | 15.39 m |
| Beam (m): | 4.70 m |
| Draft (m): | 1.6 m |
| Year: | 1985 |
| Hull Material: | GRP |
| Cabins: | 4 |
| Sleeping places: | 8 |
| Number of main engine(s): | 2 |
| Power of main engine(s) (hp): | 355 |
| Brand of main engine(s): | Caterpillar |
| Price: | € (not set) |
| HIN number: | GNDE0056F5F5 |

General

| | |
|-----------------------|-------------------|
| Name : | Hans im Glück III |
| Shipyard: | American Marine |
| Type: | 49 Motoryacht |
| Length overall (m): | 15.39 |
| Length waterline (m): | 14.86 |
| Beam (m): | 4.7 |
| Air draft (m): | 4.67 |
| Year built: | 1985 |
| Displacement (t): | 27 |
| Hull material: | GRP |
| Deck material: | GRP |

| | |
|---------------------------------------|---------|
| Superstructure material: | GRP |
| Deck finish: | Teak |
| Window material: | Single |
| Fuel tank (Litre and material): | 3785L |
| Freshwater Tank (Liter and material): | 1892L |
| Antifouling (Year): | 10-2019 |

Accommodation

| | |
|------------------|---------------------------|
| Stove: | Schott 4-pits electric |
| Microwave: | Philips Space Cobe 50 |
| Oven: | Alaska EHC 9800 EC |
| Refrigerator: | 2x Engel |
| Freezer: | Yes |
| Ice cubes maker: | U-line Icemaker |
| Interior finish: | Teak |
| Washing machine: | Siemens Siwamat Plus 7201 |
| Single berths: | 4 |
| Double bed: | 2 |
| Cabins: | 4 |
| Toilets: | 3 |
| Showers: | 3 |
| Outside shower: | 1x |

Machinery

| | |
|---|--------------------------|
| Port engine (Brand, type, hp, gearbox): | Caterpillar 3208, 355 hp |
|---|--------------------------|

| | |
|---|--------------------------|
| Main engines control (Brand and type): | Morse |
| Drive (Shaft, IPS, Jet): | Shaft drive |
| Shaft lubrication: | Waterlubricated |
| Prop (Number of blades, material): | 3 blade |
| Star engine (Brand, type, hp, gearbox): | Caterpillar 3208, 355 hp |
| Generator (Brand, type, Kw): | Onan |
| Electrical bilge pump: | Rule |
| Manual bilge pump: | Yes |
| Trim system: | Trimtabs |
| Steering system: | Hydraulic |
| Engine hours engine 1: | 2414 |
| Engine hours engine 2: | 2317 |
| Generator hours: | 6854 |

Electrical system

| | |
|--|------------------|
| House battery (Number of battery,type, total Amp, year): | 5x 200 Ah (2005) |
| DC system (V) AC system (V): | 12V / 230 V |
| Inverter (V/W/Amp): | Propower 1800W |
| Battery charger (V/W/Amp): | 2x Sentry |

Navigation system

| | |
|--------------------|--------------|
| Helm position one: | Saloon |
| Compass: | Danforth |
| Radar : | Furuno RP100 |
| Depth meter: | Seafarer 700 |

| | |
|--------------------|-----------|
| Log: | VDO |
| VHF: | Sailor |
| Rudder indicator: | Yes |
| Helm position two: | Flybridge |

Equipment

| | |
|---------------|----------------------------|
| Anchor: | Trefoil 30 kg + 80m chain |
| Windlass: | Lofrans 1500W |
| Gangway: | Yes |
| Tender crane: | Davits |
| Tender: | Avon render, 15 hp Mariner |
| Horn: | 1x |





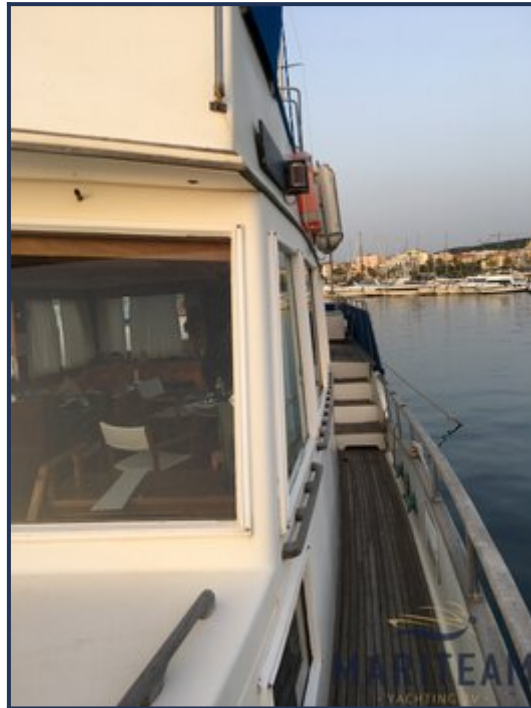




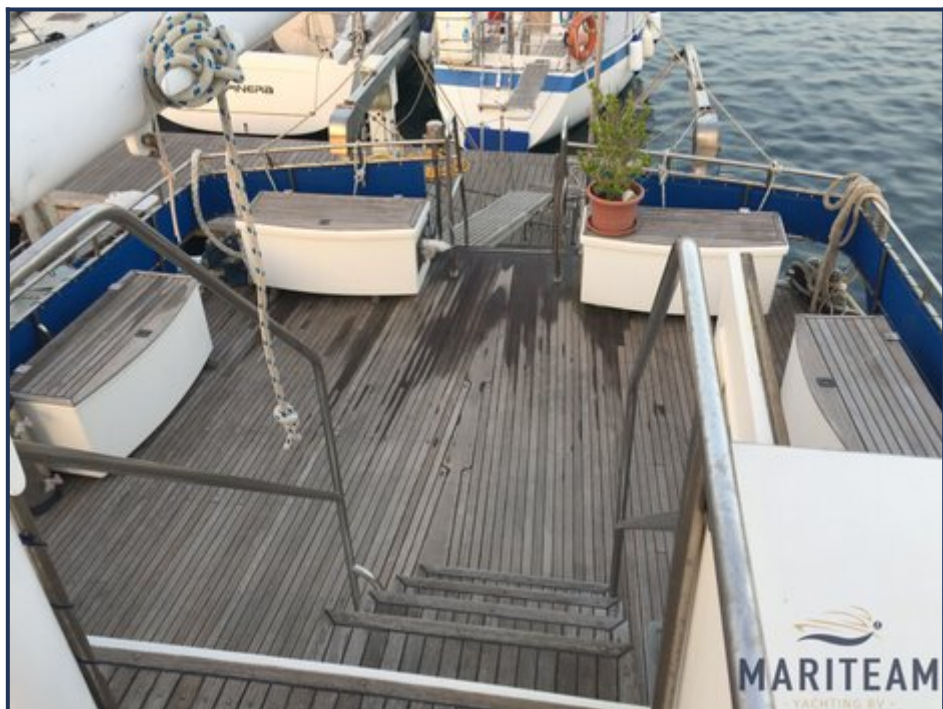




















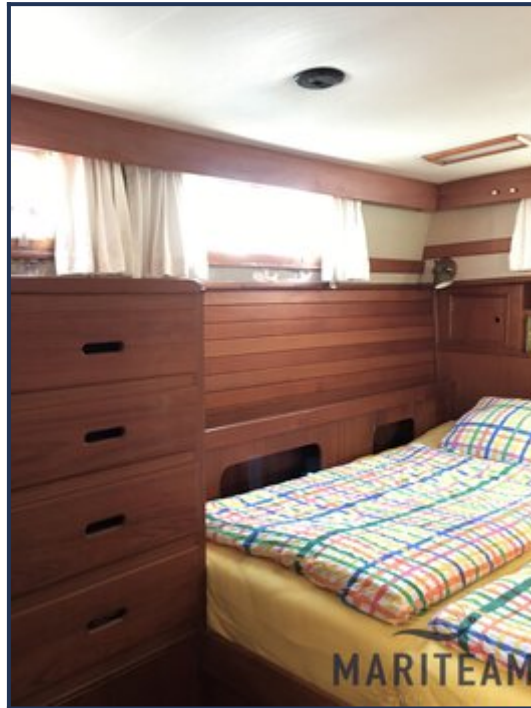










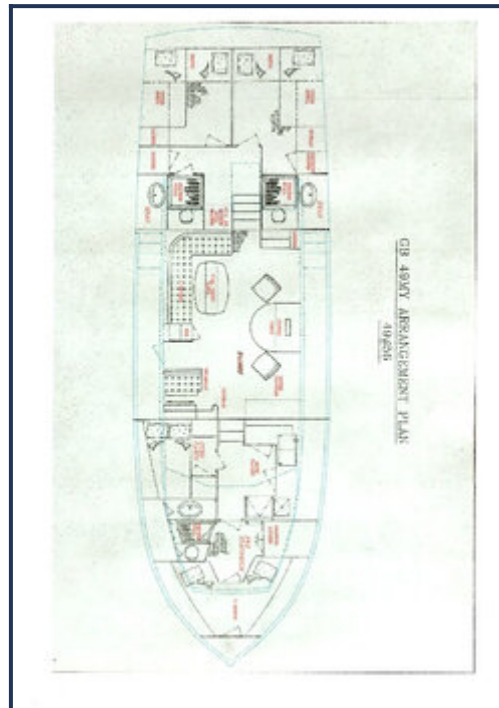












These particulars are given in good faith as supplied but cannot be guaranteed and cannot be used for contracts.