



MARITEAM

- YACHTING -



Grand Banks 41 Heritage EU 'Don'

LOA (m):	12.59 m
Beam (m):	4.77 m
Draft (m):	1.12 m
Engines:	2x 425hp Cummins / Zeus
Cabins:	2
Homeport:	At sales office
Price:	€ (not set)

Grand Banks 41Heritage EU "Don" with hull number 0016

Beautiful ship with beautiful sailing characteristics. The 'Don' has two spacious cabins, a spacious toilet with separate shower cabin. The ship is extremely complete, equipped with all conceivable options.

Are you looking for a fast-running Grand Banks with which it is also possible to sail very economically, then 'Don' is definitely worth a visit.

***Trade-in considered**

MARITEAM YACHTING

De Draei 29, 8621 CZ Heeg 📍 The Netherlands 📞 Phone +31 (0) 582 889254
info@mariteamyachting.nl 🌐 www.mariteamyachting.nl



MARITEAM

- YACHTING -

MARITEAM YACHTING

De Draei 29, 8621 CZ Heeg 📍 The Netherlands 📞 Phone +31 (0) 582 889254
info@mariteamyachting.nl 🌐 www.mariteamyachting.nl

Main specifications

Model:	41 Heritage EU
LOA (m):	12.59 m
Beam (m):	4.77 m
Draft (m):	1.12 m
Year:	2010
Hull Material:	GRP
Cabins:	2
Sleeping places:	4
Number of main engine(s):	2
Power of main engine(s) (hp):	425
Brand of main engine(s):	Cummins / Zeus
Price:	€ (not set)
VAT status:	Paid
HIN number:	MY-GNDHA016E010

General

Name :	Don
CE-category:	B
Cruising speed (Kn):	17
Maximum speed (Kn):	24
Displacement (t):	18
Fuel tank (Litre and material):	1893 L
Freshwater Tank (Liter and material):	742 L
Black water tank (Litre and material):	193 L
Hull material:	GRP
Superstructure material:	GRP

Deck material:	GRP
Deck finish:	Teak
Interior finish:	Teak
Window material:	Single

Accommodation

Cabins:	2
Double bed:	1
Single berths:	2
Showers:	1
Toilets:	1
Airconditioning system (Brand, model):	Marine Air
Stove:	Miele inductie
Combi oven/microwave:	Miele Combi H5051B
Oven:	Miele Combi H5051B
Microwave:	Sharp
Refrigerator:	Coolmatic
Freezer:	2x: Coolmatic + Vitrifrigo
Washing machine/Dryer:	Bosch Exxcel
Washing machine:	Bosch

Machinery

Main engines control (Brand and type):	Smart craft DTS + joystick
Port engine (Brand, type, hp, gearbox):	Cummins QSB 425 pk
Engine hours port engine:	2732

Star engine (Brand, type, hp, gearbox):	Cummins QSB 425 pk
Engine hours starboard engine:	2714
Steering system:	Hydraulic
Drive (Shaft, IPS, Jet):	Zeus pods
Generator (Brand, type, Kw):	Onan MDKBM7246782, 9,5 KW
Generator hours:	334
Bowthruster (Brand, type, elec/hyd):	1x
Watermaker:	Sea Recovery Aqua Whisper Mini
Water pressure pump (Brand, model):	Shurflo (smart sensor)
Hot water system:	Boiler Seaward 40 Liter
Trim system:	Cummins Zeus
Trolling valve:	2x

Electrical system

DC system (V) AC system (V):	12V/230V
Battery charger (V/W/Amp):	Mastervolt combi 12V/2000W/100AMP
Inverter (V/W/Amp):	Mastervolt combi 12V/2000W/100AMP

Safety system

Electrical bilge pump:	4x Rule 2000
Gas detector:	3x
Search light:	1x
Horn:	1x

Navigation system

Compass:	Ritchie
Gps plotter:	Raymarine hybrid touch
Radar screen:	Raymarine hybrid touch
Radar :	Raymarine
Autopilot:	Raymarine
Rudder indicator:	Cummins panel
Depth meter:	Raymarine ST70
VHF:	Raymarine 240E

Equipment

Tender crane:	Steelhead marine SM800R
Gangway:	Bensensoni
Anchor:	2x
Windlass:	Lofrans Tigres TG 016505
Deckwash:	1















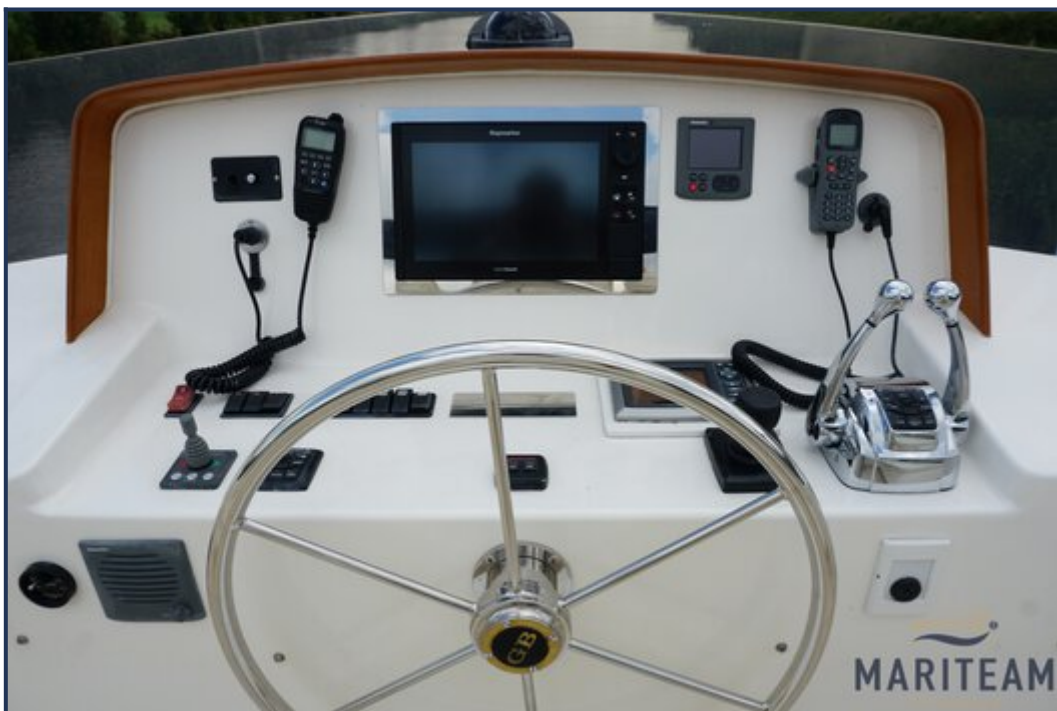






























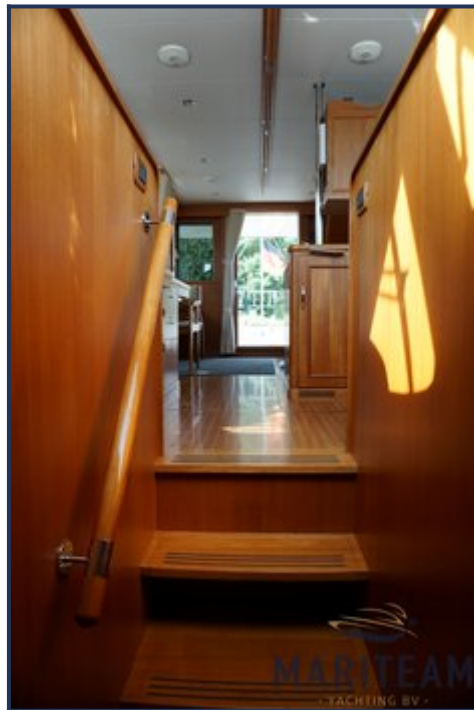












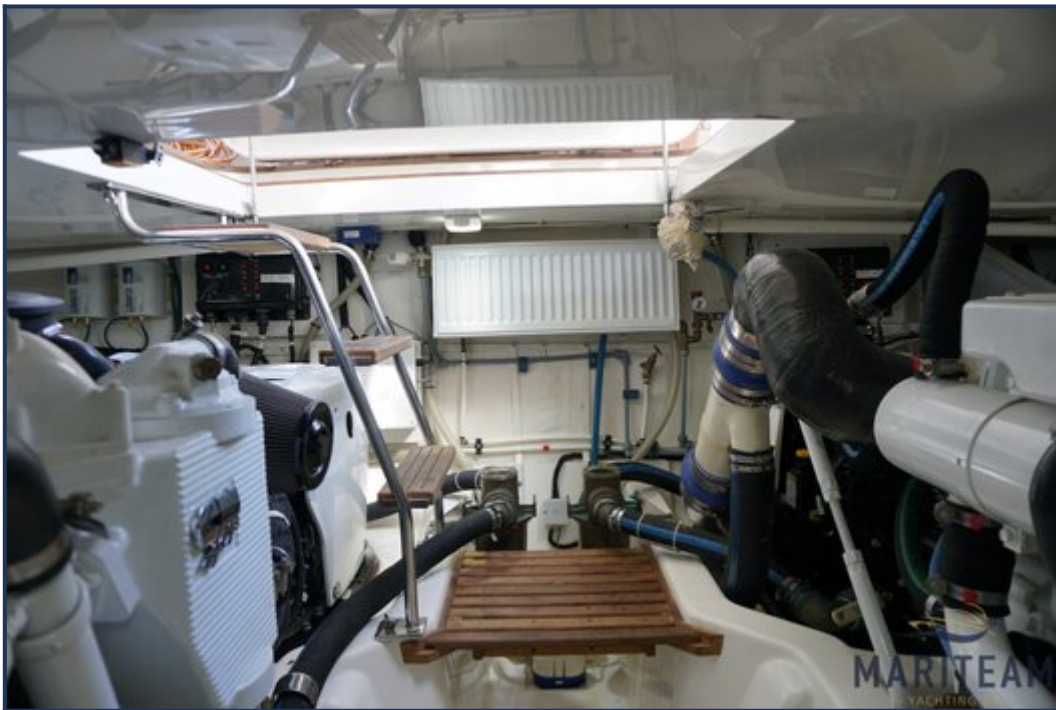














These particulars are given in good faith as supplied but cannot be guaranteed and cannot be used for contracts.