



## Grand Banks 42 'Makathea'

LOA (m):	13.17 m
Beam (m):	4.29 m
Draft (m):	1.27 m
Engines:	2x 210hp Caterpillar
Cabins:	2
Homeport:	The Netherlands
Price:	€ (not set)

Grand Banks 42 'Makathea' with hull number 1226 - which has a beautiful layout and is lovingly maintained.

The 'Makathea' is very pleasant to sail thanks to its bow and stern thruster, she also has sleeping accommodation for 5-7 people.



# MARITEAM

- YACHTING -

## MARITEAM YACHTING

De Draei 29, 8621 CZ Heeg 📍 The Netherlands 📞 Phone +31 (0) 582 889254  
[info@mariteamyachting.nl](mailto:info@mariteamyachting.nl) 🌐 [www.mariteamyachting.nl](http://www.mariteamyachting.nl)

## Main specifications

Model:	42 Classic
LOA (m):	13.17 m
Beam (m):	4.29 m
Draft (m):	1.27 m
Year:	1991
Hull Material:	GRP
Cabins:	2
Sleeping places:	5
Number of main engine(s):	2
Power of main engine(s) (hp):	210
Brand of main engine(s):	Caterpillar
Price:	€ (not set)
VAT status:	Paid
HIN number:	GNDD1226I192

## General

Name :	Makathea
Shipyard:	American Marine
Air draft (m):	3.99
Displacement (t):	16
Hull material:	GRP
Deck material:	GRP
Superstructure material:	GRP
Deck finish:	Teak
Window material:	Single
Fuel tank (Litre and material):	2271 L Steel

Freshwater Tank (Liter and material):	1100L plastic (+\ - 2014)
Black water tank (Litre and material):	1x
Antifouling (Year):	2019: (International)
Maximum speed (Kn):	12
Cruising speed (Kn):	8.5

## Accommodation

Stove:	3 pitts keramisch
Oven:	Princess
Refrigerator:	2x (2015 - cooling system)
Interior finish:	Teak
Single berths:	3
Double bed:	1 + dinette
Cabins:	2
Toilets:	2
Showers:	2

## Machinery

Port engine (Brand, type, hp, gearbox):	Caterpillar 3208 NA, 210hp Twin Disc
Star engine (Brand, type, hp, gearbox):	Caterpillar 3208 NA, 210hp Twin Disc
Engine hours starboard engine:	2949
Main engines control (Brand and type):	Morse
Drive (Shaft, IPS, Jet):	Shaft drive
Shaft lubrication:	Water lubricated
Prop (Number of blades, material):	2x 3 blade (+ 2x 4 blade as spare)

Generator (Brand, type, Kw):	Westerbeke 8.0 BTD, 8 kw
Generator hours:	2077
Bowthruster (Brand, type, elec/hyd):	Max power electric
Sternthruster (Brand, type, elec/hyd):	Max power CT100 - electric (2016)
Electrical bilge pump:	3x
Manual bilge pump:	1x
Water pressure pump (Brand, model):	Marco (2018)
Hot water system:	Nautic Boiler 40L
Heating system (brand, model, type):	Webasto SG1577, hot air
Airconditioning system (Brand, model):	not connected
Trim system:	Boat Leveller
Macerator pump:	1x
Steering system:	Mechanical
Deckwash:	1x

## Electrical system

DC system (V) AC system (V):	12V / 230 V
Battery charger (V/W/Amp):	Mastervolt 12V/70Amp

## Safety system

Fire extinguisher engine room:	1x
Radar reflector:	1x
Life raft:	Arimar (date expired)

## Navigation system

Compass:	Danforth
Gps plotter:	Raymarine E80
Radar screen:	Raymarine E80
Radar :	Raymarine 4KW
Depth meter:	Raymarine st60+ tridata
Log:	Raymarine ST60+
Wind meter :	Raymarine ST60+ Wind
VHF:	Raymarine Ray 240E
Autopilot:	Raymarine ST6001

## Equipment

Anchor:	2x
Windlass:	1x (+ 50m galvanized chain)









































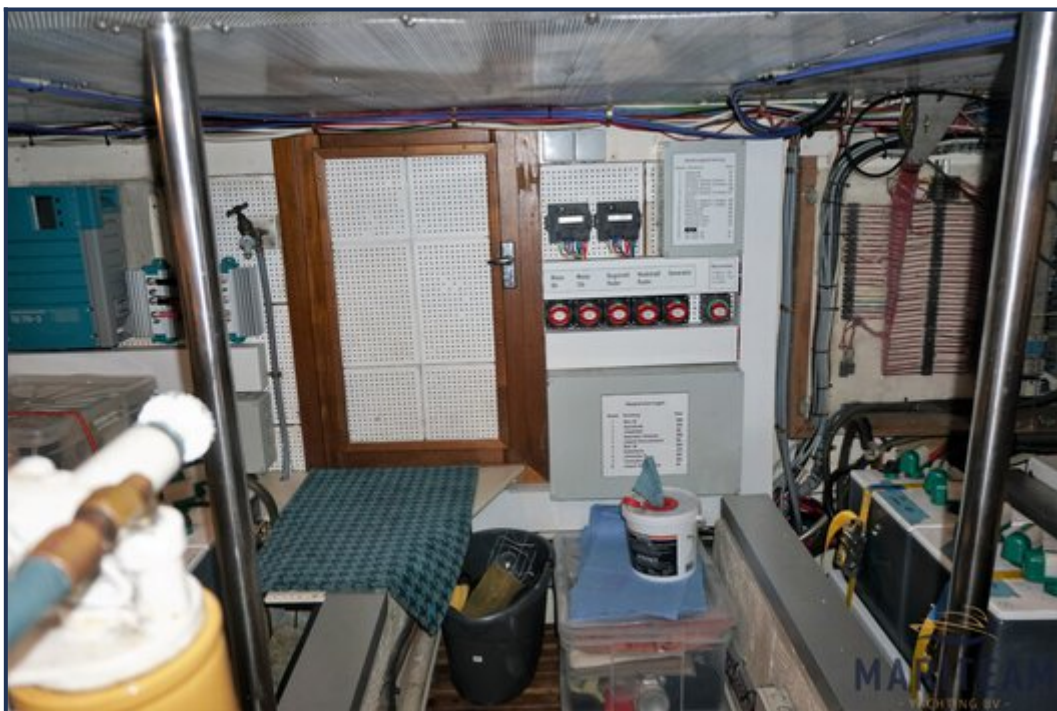




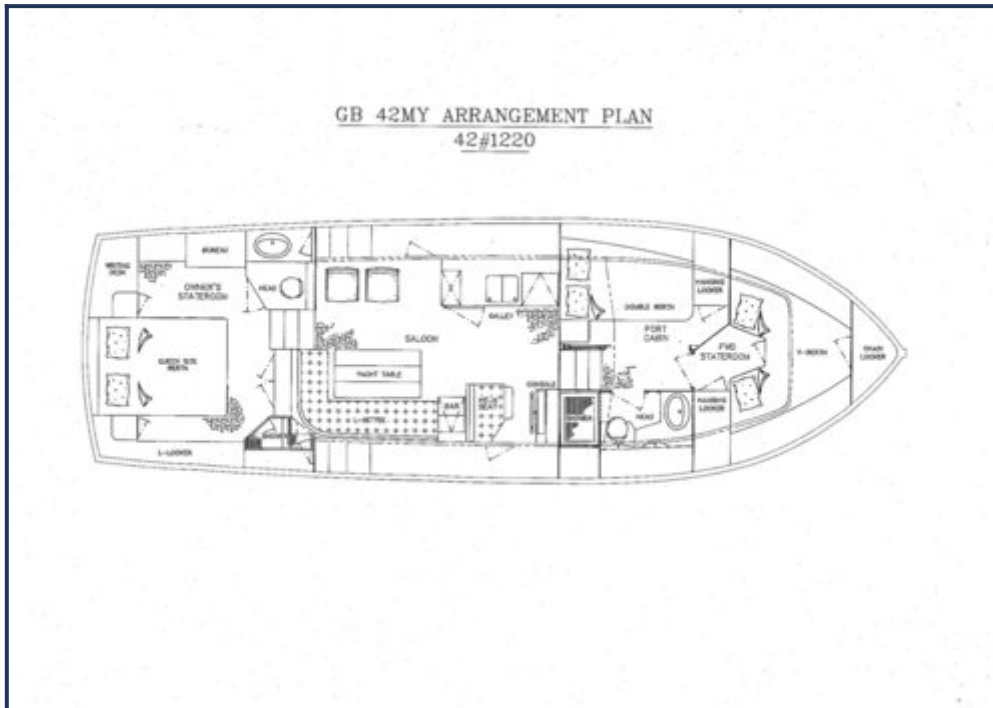












*These particulars are given in good faith as supplied but cannot be guaranteed and cannot be used for contracts.*