



Grand Banks 36 Classic 'Lady M.A.'

LOA (m):	11.07 m
Beam (m):	3.71 m
Draft (m):	1.19 m
Engines:	2x 120hp Ford Lehman
Cabins:	2
Homeport:	Lelystad
Price:	€ (not set)

Grand Banks 36 Classic 'Lady M.A.' with hullnumber 592 and 2x 120 hp Ford Lehman engines.

The characteristic model with advantageous layout and good sailing characteristics makes this ship a real favorite among motor yachts.

* trade-in of a sailing ship is negotiable

Main specifications

Model:	36 Classic
LOA (m):	11.07 m
Beam (m):	3.71 m
Draft (m):	1.19 m
Year:	1979
Hull Material:	GRP
Cabins:	2
Sleeping places:	5
Number of main engine(s):	2
Power of main engine(s) (hp):	120
Brand of main engine(s):	Ford Lehman
Price:	€ (not set)
VAT status:	Paid

General

Name :	Lady M.A.
Displacement (t):	10.5
Hull material:	GRP
Deck material:	GRP
Superstructure material:	GRP
Deck finish:	Teak
Window material:	Double (moving windows single)
Fuel tank (Litre and material):	2x 750L + 1x 200L for diesel heating
Freshwater Tank (Liter and material):	2x 200L
Grey water tank (Litre and material):	1x
Antifouling (Year):	2019 + anodes

Accommodation

Stove:	Eno marine 3 pitts gas
Oven:	Eno marine
Refrigerator:	1x
Freezer:	1x
Interior finish:	Teak
Single berths:	3
Double bed:	1
Cabins:	2
Toilets:	1
Showers:	1

Machinery

Port engine (Brand, type, hp, gearbox):	Ford Lehman 120hp, 2715E
Engine hours port engine:	5168
Star engine (Brand, type, hp, gearbox):	Ford Lehman 120hp, 2715E
Engine hours starboard engine:	5168
Main engines control (Brand and type):	Morse 4 hendel
Drive (Shaft, IPS, Jet):	Shaft drive, (glands 2019 replaced)
Shaft lubrication:	Waterlubricated
Electrical bilge pump:	1x
Manual bilge pump:	1x
Water presure pump (Brand, model):	2017
Hot water system:	Boiler 40L - electric part of boiler defect, on motor heated

Heating system (brand, model, type):	Maritiem booster central heating
Macerator pump:	1x
Steering system:	Mechanical

Electrical system

House battery (Number of battery,type, total Amp, year):	2x 110 Amp
Start battery (Number of battery,type, total Amp, year):	1x 110 Amo
DC system (V) AC system (V):	12V
Inverter (V/W/Amp):	Victron Multiplus 12V/1600W/70Amp
Battery charger (V/W/Amp):	Victron Multiplus 12V/1600W/70Amp

Safety system

Radar reflector:	1x
------------------	----

Navigation system

Compass:	Danforth
Depth meter:	Seafarer 700
VHF:	Simrad RS35
Autopilot:	NECO illumination

Equipment

Anchor:	20 kg plowanker
Windlass:	1x
Horn:	Electric























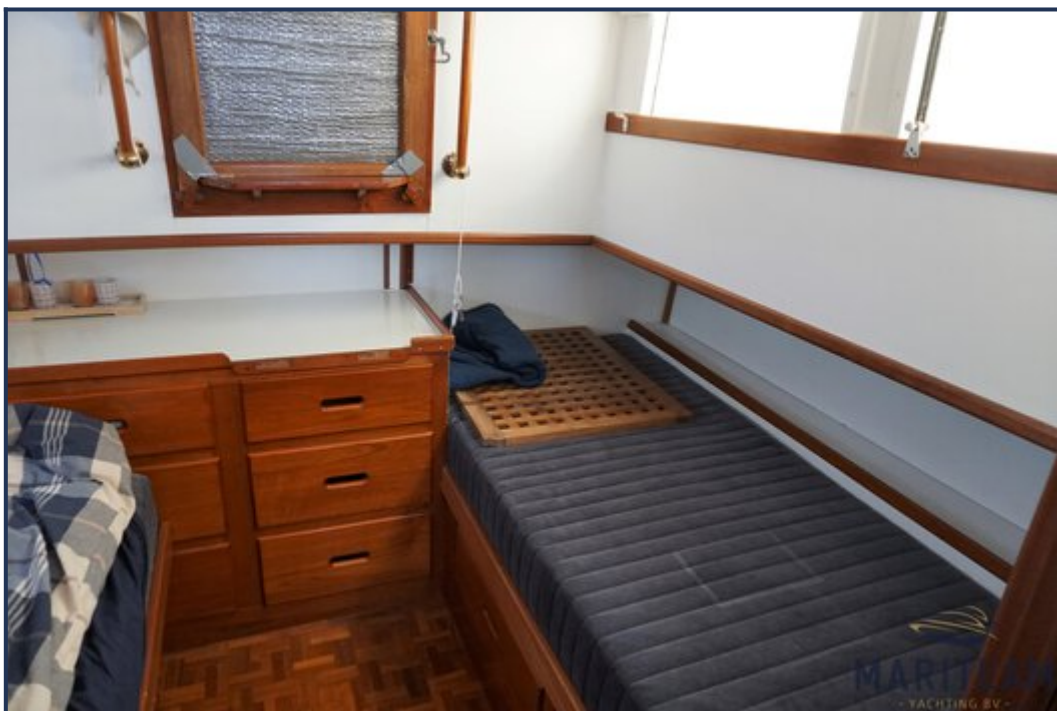






















These particulars are given in good faith as supplied but cannot be guaranteed and cannot be used for contracts.