



Grand Banks 46 Classic 'Pegasus'

LOA (m):	14.35 m
Beam (m):	4.50 m
Draft (m):	1.33 m
Engines:	2x 375hp Caterpillar
Cabins:	2
Homeport:	The Netherlands
Price:	€ (not set)

Grand Banks Classic 'Pegasus' with hull number 086, a spacious and very neat ship with many desirable options.

A selection of the popular options: Koopnautic stabilizers, dual cooling water filters, new Raymarine navigation and a CCTV dome camera from Samsung with 12x zoom. The kitchen is also luxuriously equipped with a 4-burner induction hob, 2 fridges and a large freezer.

The 'Pegasus' was maintained with much love and had new anti-fouling in Feb. 2019.

This beautiful Grand Banks 46 is ready for a new sailing season with its new owners!



MARITEAM

- YACHTING -

MARITEAM YACHTING

Ceresweg 20-B, 8938 BG Leeuwarden 📍 The Netherlands 📞 Phone +31 (0) 582 889254
info@mariteamyachting.nl 📧 www.mariteamyachting.nl

Main specifications

Model:	46 Classic
LOA (m):	14.35 m
Beam (m):	4.50 m
Draft (m):	1.33 m
Year:	1990
Hull Material:	GRP
Cabins:	2
Sleeping places:	4
Number of main engine(s):	2
Power of main engine(s) (hp):	375
Brand of main engine(s):	Caterpillar
Price:	€ (not set)
VAT status:	Paid
HIN number:	GNDF0086A090

General

Name :	Pegasus
Shipyard:	Grand Banks Yachts
Displacement (t):	18
Hull material:	GRP
Deck material:	GRP
Superstructure material:	GRP
Deck finish:	Teak
Window material:	Single
Fuel tank (Litre and material):	2271L
Freshwater Tank (Liter and material):	1077L

Antifouling (Year):	2019
---------------------	------

Accommodation

Stove:	BOSCH PIA611T116E, inductie (single phase 230V)
Refrigerator:	Marine Air PMEAW08 + Marine Air Baysider 2
Freezer:	Grunert
Interior finish:	Teak
Washing machine/Dryer:	AEG LAVAMAT TURBO
Single berths:	2
Double bed:	1
Cabins:	2
Toilets:	2x Tecma S39565
Showers:	2x
Combi oven/microwave:	BOSCH HBC84H500

Machinery

Port engine (Brand, type, hp, gearbox):	Caterpillar 3208TA 375pk, Twin disc
Engine hours port engine:	2544
Star engine (Brand, type, hp, gearbox):	Caterpillar 3208TA 375pk, Twin disc
Engine hours starboard engine:	2647
Main engines control (Brand and type):	Morse
Drive (Shaft, IPS, Jet):	Shaft drive
Shaft lubrication:	Water lubricated
Prop (Number of blades, material):	4 blade
Generator (Brand, type, Kw):	Onan 6.5 MDKDP 26501C



Generator hours:	630
Bowthruster (Brand, type, elec/hyd):	Vetus
Fuel polishing system:	1x
Electrical bilge pump:	2x rule
Manual bilge pump:	1x
Water pressure pump (Brand, model):	Jabsco mod. 317555-0000
Hot water system:	HOIAX TRYKKBEREDER, boiler
Heating system (brand, model, type):	Eberspacher D8lc
Trim system:	Boat Leveller
Stabilizer system:	Koopnautic Searock
Macerator pump:	Sealand
Steering system:	Mechanical
Deckwash:	1x

Electrical system

Bowthruster battery (Number of battery,type, total Amp, year):	AGM 12V/200AH
DC system (V) AC system (V):	12V/230V
Inverter (V/W/Amp):	Victron Phoenix 12V/800
Battery charger (V/W/Amp):	Matervolt Mass12/60

Navigation system

Compass:	Danforth
Gps plotter:	Simrad CP40 DGPS met JRC DGOS212 antenne
Radar :	Furuno
Depth meter:	Raymarine I70S (2019)

Log:	Raymarine I70S (2019)
VHF:	Raymarine Ray 60 + Sailor RT4801
AIS:	Raymarine AIS 650
Autopilot:	Robertson AP 45

Equipment

Anchor:	1x
Windlass:	1x
Horn:	Compressor

























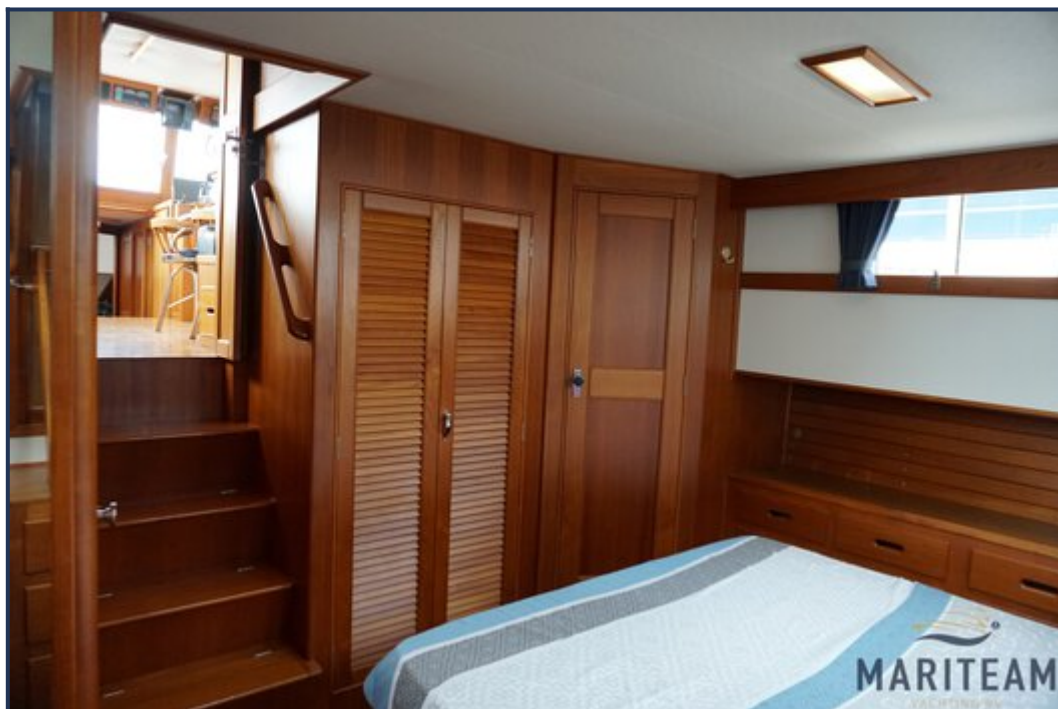






































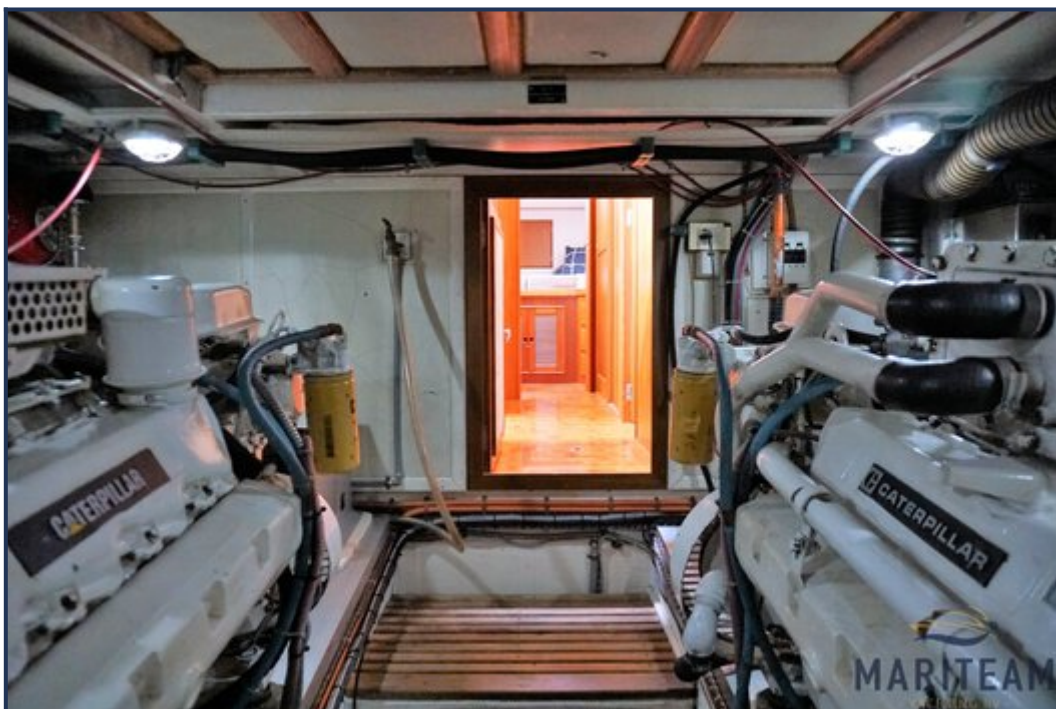


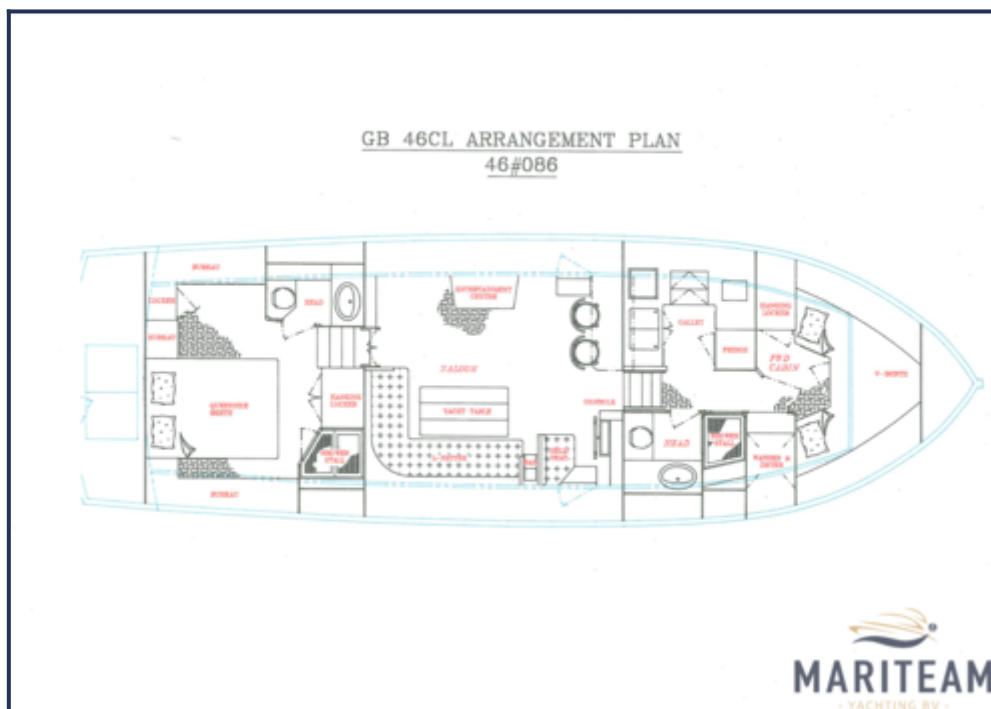












These particulars are given in good faith as supplied but cannot be guaranteed and cannot be used for contracts.