



Mulder 73 Wheelhouse 'Gloria'

LOA (m):	22.30 m
Beam (m):	5.60 m
Draft (m):	1.6 m
Engines:	2x 900hp Volvo
Cabins:	4
Homeport:	The Netherlands
Price:	€ (not set)

Big, bigger, biggest certainly applies to the Mulder 73 Wheelhouse "Gloria". With its 22 meters you have plenty of space. Eye-catching are the fan bow, the teak deck and the characteristic wheelhouse with huge electric sliding hatch. Very nice is the many chrome work with the bow plate and anchor plates as the most important examples. The semi-glider, built entirely in aluminum, is powered by two Volvo Penta D13 diesel engines of 900 hp each, providing a top speed of 22 knots. It should not be left unmentioned that the engines have made relatively few hours.

The Mulder 73 Wheelhouse "Gloria" has been very well looked after and, moreover, it has recently been completely checked, making the ship completely ready for a second owner. Thanks to an efficient layout, the ship has a full-width owner's cabin with its own sanitary facilities and no less than three guest cabins with two bathrooms. As you would expect from a motor yacht of this caliber, the Mulder 73 Wheelhouse "Gloria" is fully equipped and includes a hydraulic bow and stern thruster, Naiaid stabilizers, Williams 325 tenderjet and a hydraulic mast. Come and see her and be amazed at what this beautiful yacht has to offer.



MARITEAM

- YACHTING -

MARITEAM YACHTING

Ceresweg 20-B, 8938 BG Leeuwarden 📍 The Netherlands 📞 Phone +31 (0) 582 889254
info@mariteamyachting.nl 📧 www.mariteamyachting.nl

Main specifications

Model:	73 Wheelhouse
LOA (m):	22.30 m
Beam (m):	5.60 m
Draft (m):	1.6 m
Year:	2010
Hull Material:	Aluminum
Cabins:	4
Sleeping places:	7
Number of main engine(s):	2
Power of main engine(s) (hp):	900
Brand of main engine(s):	Volvo
Price:	€ (not set)
VAT status:	Paid
HIN number:	MUV10084H010

General

Name :	Gloria
Shipyard:	Mulder shipyard
CE-category:	A
Displacement (t):	48 empty / 62 half-loaded
Hull material:	Aluminum
Deck material:	Aluminum
Superstructure material:	Aluminum
Deck finish:	Teak
Window material:	Double tinted glass
Fuel tank (Litre and material):	7200L, Aluminum

Freshwater Tank (Liter and material):	2500L, SS
Black water tank (Litre and material):	450L, Aluminum
Grey water tank (Litre and material):	500L, Aluminum
Antifouling (Year):	International 340 (2020)
Maximum speed (Kn):	22
Cruising speed (Kn):	17 upper cruising / 9 lower cruising

Accommodation

Stove:	Siemens inductie, 4 pits
Refrigerator:	Siemens 130L, saloon (2020) / Siemens 130L, wheelhouse
Ice cubes maker:	U-line, wheelhouse
Interior finish:	Mahogany / Teak
Dish washer:	Siemens
Washing machine:	Miele W3203
Dryer:	Miele T8803C
Single berths:	3
Double bed:	2
Cabins:	4
Toilets:	1x Planus / 2x Tecma electric
Showers:	3
Combi oven/microwave:	Siemens

Machinery

Port engine (Brand, type, hp, gearbox):	Volvo 900 hp, D13-900, hydraulic gearbox
Engine hours port engine:	900

Star engine (Brand, type, hp, gearbox):	Volvo 900 hp, D13-900, hydraulic gearbox
Engine hours starboard engine:	900
Trolling valve:	2x
Drive (Shaft, IPS, Jet):	Shaft drive
Shaft lubrication:	Water lubricated
Prop (Number of blades, material):	5 blade, Skew Back
Generator (Brand, type, Kw):	Onan 16 kW/ 1500 rpm + Onan 8 kW / 1500 rpm
Generator hours:	845
Bowthruster (Brand, type, elec/hyd):	Hydraulic 30 hp
Sternthruster (Brand, type, elec/hyd):	Hydraulic 30 hp
Fuel polishing system:	1x
Electrical bilge pump:	1x 220V
Watermaker:	1x Tecnomar
Water pressure pump (Brand, model):	Lowara hydrophore pump, 240V
Hot water system:	Boiler 75L
Heating system (brand, model, type):	Kabola HR500
Airconditioning system (Brand, model):	1x
Stabilizer system:	NAIAD
Steering system:	Hydraulic
Deckwash:	1x

Electrical system

House battery (Number of battery,type, total Amp, year):	6x 200 Ah (2020)
Start battery (Number of battery,type, total Amp, year):	2x 200 Ah (2020)
DC system (V) AC system (V):	12V / 220V + prepared for 110V shorepower
Inverter (V/W/Amp):	Mass 5kW / Isolation Transformer 2x Mastervolt

Battery charger (V/W/Amp):

Mass 100 Amp

Safety system

Fire extinguisher engine room:

Automatic

EPIRB:

Yes

Gas detector:

1x

Fire alarm:

2x

Navigation system

Radar :

Raymarine HD digital

Depth meter:

Raymarine ST70

VHF:

Raymarine RAY240E

Autopilot:

Raymarine ST70

Equipment

Anchor:

2x 75kg galvanic + 2x anchorchain (50m + 100m galvanic)

Windlass:

2x Muir 3500 vertical capstan

Gangway:

Opacmare

Tender crane:

Maxilift 300kg

Tender:

Williams 325

Search light:

2x

Horn:

1x







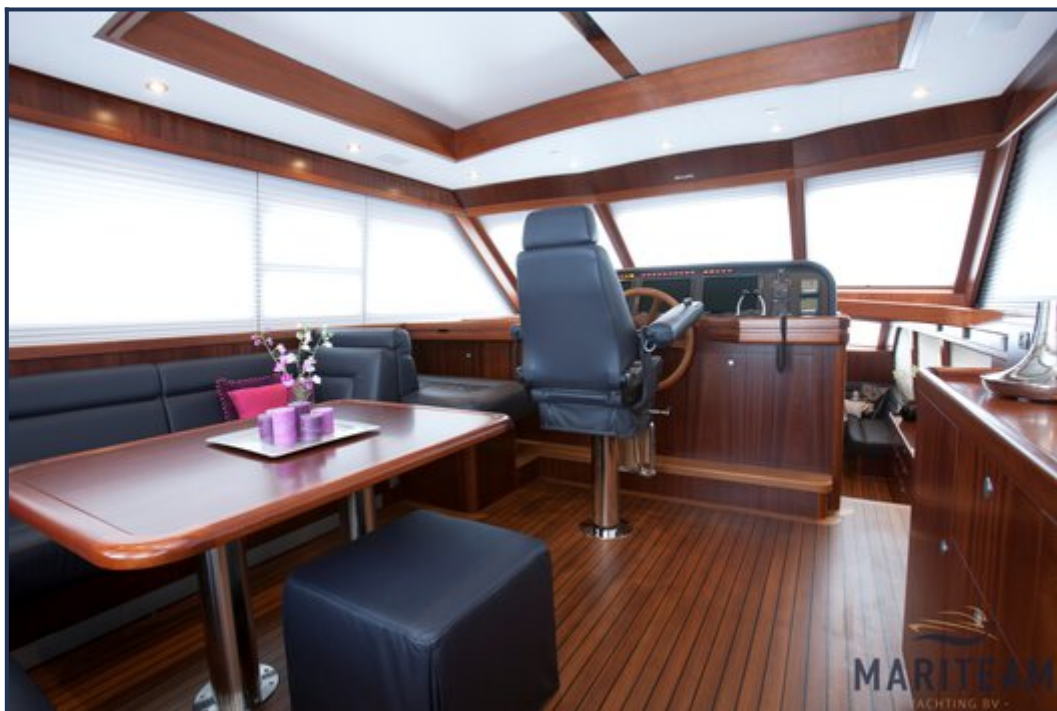






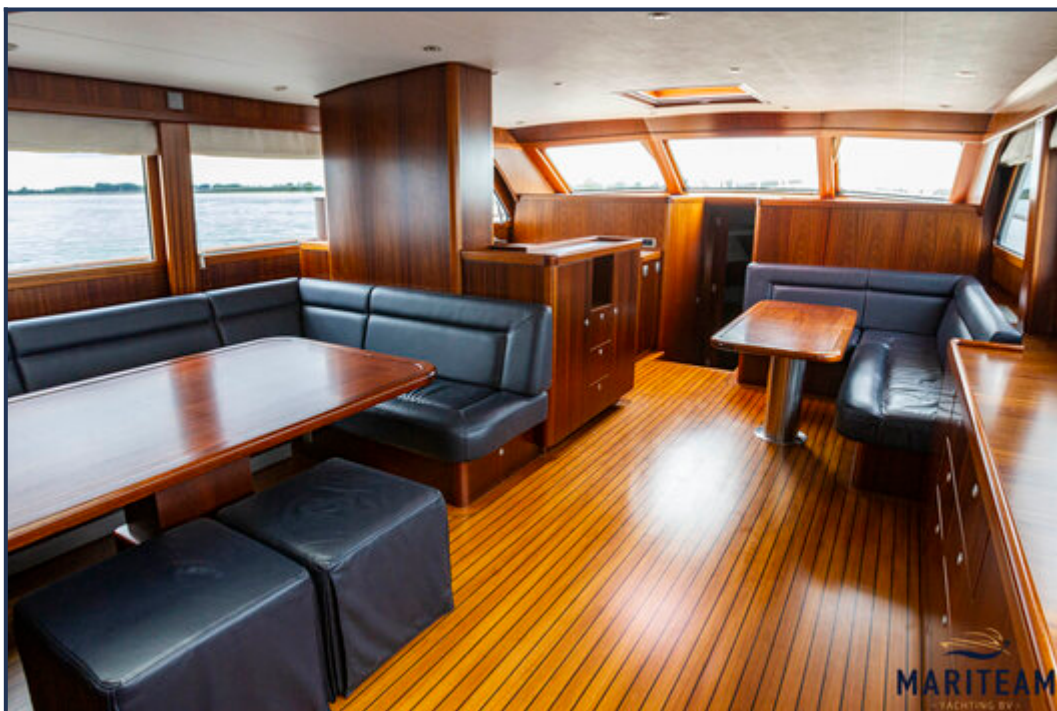












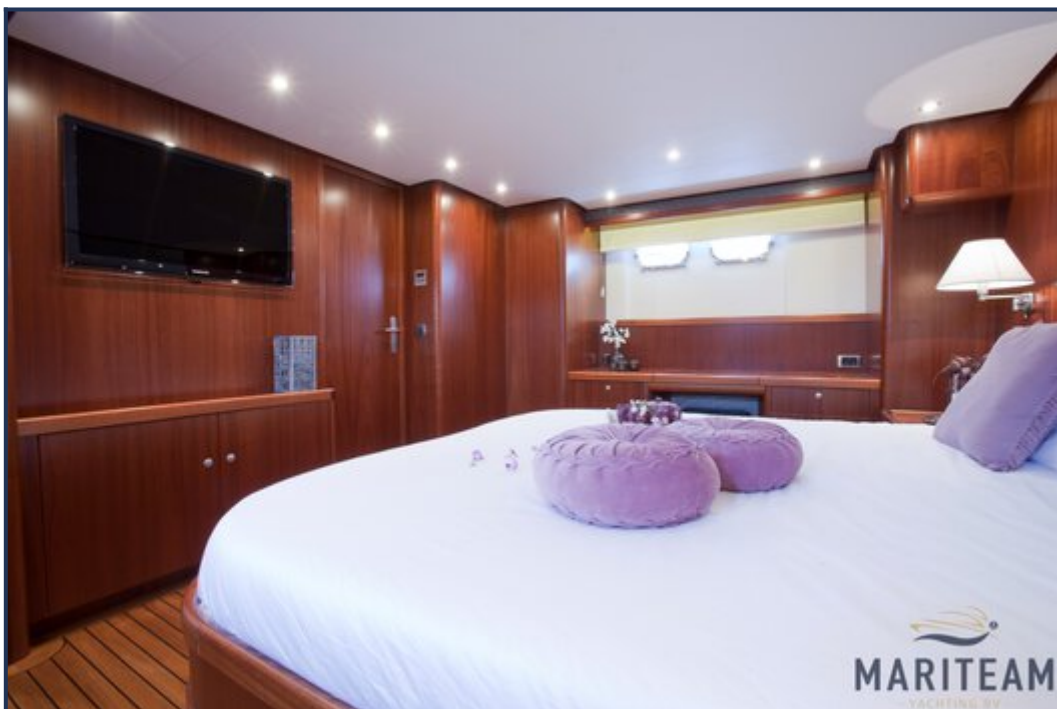












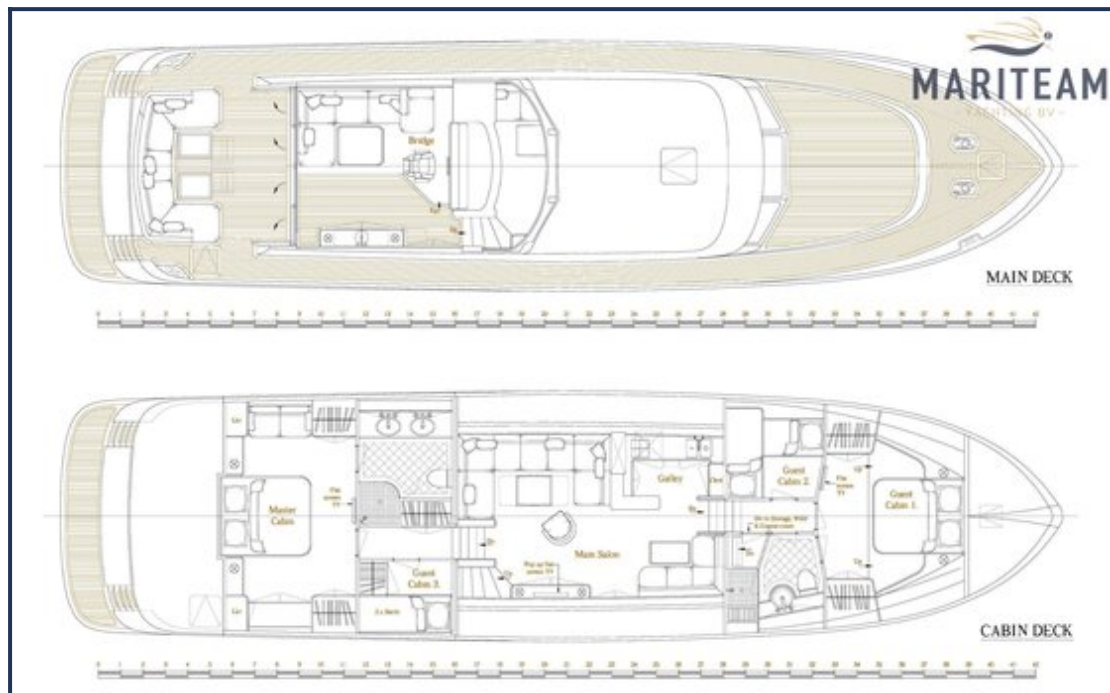












These particulars are given in good faith as supplied but cannot be guaranteed and cannot be used for contracts.