



# MARITEAM

- YACHTING -



## Grand Banks 42 Classic 'Maxum'

LOA (m): 13.17 m

Beam (m): 4.18 m

Draft (m): 1.27 m

Engines: 2x 123hp Mitsubishi (2004)

Cabins: 2

Homeport: The Netherlands

Price: € (not set)

Grand Banks 42 Classic 'Maxum' with hull number 376 is one of the first Grand Banks yachts built of polyester.

The 'Maxum' is a spaciouly designed ship with sleeping accommodation for no less than 7 people, thanks in part to the dinette in the fresh and cozy salon .

In 2004 she received new Mitsubishi engines, which have only been running for 1000 hours to date. New fuel tanks were also installed at that time. The plotters, depth sounder, autopilot and VHF radio are all from 2005.

In April 2019, she will go dry for a short period of time for a new anti-fouling, anodes and a big cleaning.

### MARITEAM YACHTING

De Draei 29, 8621 CZ Heeg 📍 The Netherlands 📞 Phone +31 (0) 582 889254

[info@mariteamyachting.nl](mailto:info@mariteamyachting.nl) 🌐 [www.mariteamyachting.nl](http://www.mariteamyachting.nl)



## Main specifications

|                               |                   |
|-------------------------------|-------------------|
| Model:                        | 42 Classic        |
| LOA (m):                      | 13.17 m           |
| Beam (m):                     | 4.18 m            |
| Draft (m):                    | 1.27 m            |
| Year:                         | 1973              |
| Hull Material:                | GRP               |
| Cabins:                       | 2                 |
| Sleeping places:              | 5                 |
| Number of main engine(s):     | 2                 |
| Power of main engine(s) (hp): | 123               |
| Brand of main engine(s):      | Mitsubishi (2004) |
| Price:                        | € (not set)       |
| VAT status:                   | Paid              |
| HIN number:                   | GNDDG3761073      |

## General

|                                       |                      |
|---------------------------------------|----------------------|
| Name :                                | Maxum                |
| Shipyard:                             | Grand Banks Yachts   |
| Hull material:                        | GRP                  |
| Deck material:                        | GRP                  |
| Superstructure material:              | GRP                  |
| Deck finish:                          | Teak                 |
| Window material:                      | Single               |
| Fuel tank (Litre and material):       | 4: 2x 490L + 2x 720L |
| Freshwater Tank (Liter and material): | 2x 490L              |
| Antifouling (Year):                   | 2019                 |



## Accommodation

|                  |   |
|------------------|---|
| Stove:           | Caso design S-line 3500, 2 pits, electrisch |
| Oven:            | Ikea FXZM6 OV GO 1 SA                       |
| Refrigerator:    | 1x  |
| Freezer:         | 1x  |
| Interior finish: | Teak  |
| Single berths:   | 3   |
| Double bed:      | 1 + dinette                                 |
| Cabins:          | 2   |
| Toilets:         | 2: 1x manuel, 1x electric                   |
| Showers:         | 2x  |

## Machinery

|   |   |
|---|---|
| Port engine (Brand, type, hp, gearbox): | Mitsubishi 123 hp S6S-DT                                |
| Engine hours port engine:               | v.a. 2004 new Mitsubishi engines, 1000 uur / Total 6551 |
| Star engine (Brand, type, hp, gearbox): | Mitsubishi 123 hp S6S-DT                                |
| Engine hours starboard engine:          | v.a. 2004 new Mitsubishi engines, 1000 uur / Total 7118 |
| Drive (Shaft, IPS, Jet):                | Shaft drive   |
| Shaft lubrication:                      | Water lubricated  |
| Generator (Brand, type, Kw):            | Westerbeke 12 kva                                       |
| Generator hours:                        | 739   |
| Bowthruster (Brand, type, elec/hyd):    | Vetus, hydraulic  |
| Electrical bilge pump:                  | 1x  |



|                                      |                              |
|--------------------------------------|------------------------------|
| Manual bilge pump:                   | 1x                           |
| Water pressure pump (Brand, model):  | 1x                           |
| Hot water system:                    | Sigmar Marine Boiler         |
| Heating system (brand, model, type): | Eberspacher D7L - 25.1480.01 |
| Steering system:                     | Mechanical                   |
| Deckwash:                            | 1x                           |

## Electrical system

|                              |                                       |
|------------------------------|---------------------------------------|
| DC system (V) AC system (V): | 12V/220V                              |
| Inverter (V/W/Amp):          | Victron phoenix multi 12V/1600W/70Amp |
| Battery charger (V/W/Amp):   | Victron phoenix multi 12V/1600W/70Amp |

## Safety system

|                  |              |
|------------------|--------------|
| Radar reflector: | 1x           |
| Life raft:       | 1x exp. 2009 |

## Navigation system

|                   |                   |
|-------------------|-------------------|
| Gps plotter:      | Raymarine A-serie |
| Depth meter:      | Raymarine C125    |
| VHF:              | Raymarine Ray 55E |
| AIS:              | 1x                |
| Autopilot:        | Raymarine P70     |
| Rudder indicator: | VDO               |



## Equipment

|           |    |
|-----------|----|
| Anchor:   | 1x |
| Windlass: | 1x |





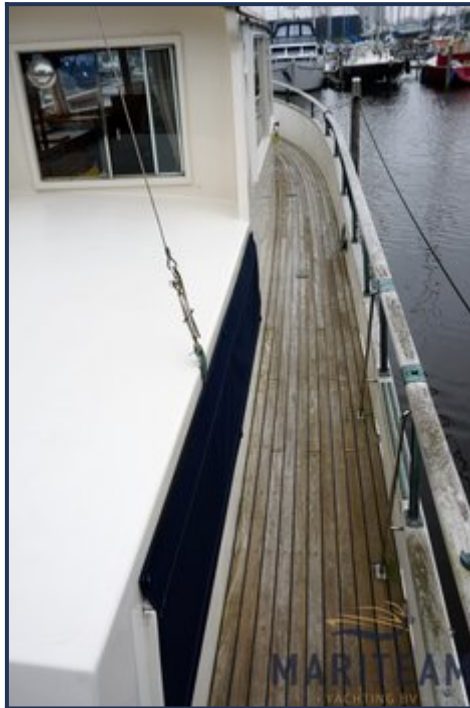












































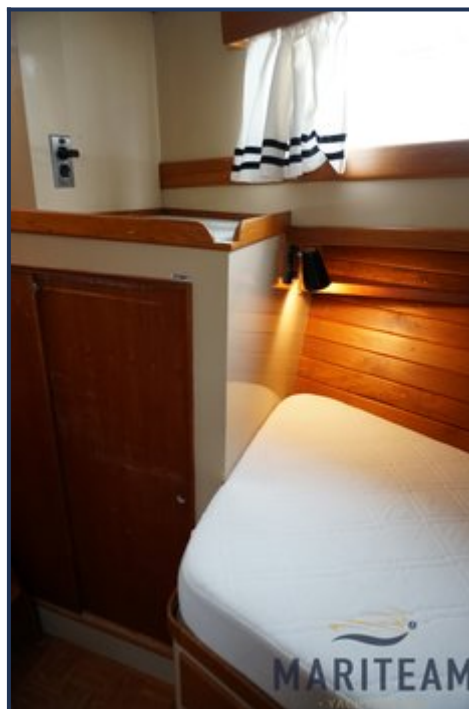
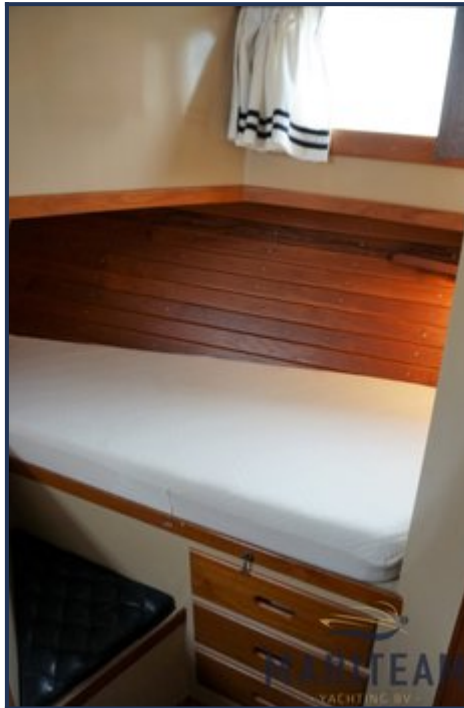










































*These particulars are given in good faith as supplied but cannot be guaranteed and cannot be used for contracts.*