



Grand Banks 46 Europa 'Sylt'

LOA (m):	14.35 m
Beam (m):	4.50 m
Draft (m):	1.33 m
Shipyard:	Grand Banks Yachts
Year built:	2003
Engines:	2x 220hp Cummins
Cabins:	3
Homeport:	The Netherlands
Price:	€ (not set)

A beautiful example of one of the last built Grand Banks 46 Europas!

The 'Sylt' has the very popular galley-up, 3 cabin layout with 2 bathrooms, making maximum use of the space and comfort that the ship offers.

In addition, this fresh GB46EU has a lovely sofa on the flybridge with cushion for sunbathing, bow and stern thruster, two fine Cummins engines, a silent Onan generator, washer/dryer combination, 2 Samsung televisions, climate cabinet, spacious kitchen with good equipment and fully equipped new (window) upholstery in the saloon which makes it a very nice, cozy and complete ship!



*more exterior photos to follow soon!

MARITEAM YACHTING

Ceresweg 20-B, 8938 BG Leeuwarden 📍 The Netherlands 📞 Phone +31 (0) 582 889254
info@mariteamyachting.nl 📧 www.mariteamyachting.nl

Main specifications

Model:	46 Europa
LOA (m):	14.35 m
Beam (m):	4.50 m
Draft (m):	1.33 m
Year:	2003
Hull Material:	GRP
Cabins:	3
Sleeping places:	5
Number of main engine(s):	2
Power of main engine(s) (hp):	220
Brand of main engine(s):	Cummins
Price:	€ (not set)
VAT status:	Paid
Draft (m):	1.33
HIN number:	SG-GNDF0257D303

General

Name :	Sylt
Shipyard:	Grand Banks Yachts
Type:	46 Europa
Length overall (m):	14.35
Length waterline (m):	13.65
Beam (m):	4.5
Air draft (m):	4.44
Year built:	2003
CE-category:	A

Displacement (t):	20
Hull material:	GRP
Deck material:	GRP
Superstructure material:	GRP
Deck finish:	Teak
Window material:	Single
Fuel tank (Litre and material):	3406L
Freshwater Tank (Liter and material):	1136L
Black water tank (Litre and material):	2x 117L
Antifouling (Year):	2020
Maximum speed (Kn):	11
Cruising speed (Kn):	9

Accommodation

Stove:	Miele 4 burner electric
Microwave:	Siemens inno-wave
Oven:	Miele
Refrigerator:	1x Waeco 1x Isotherm
Freezer:	1x Waeco freezing compartment 1x Isotherm freezing compartment + 1x Exquisit freezer
Ice cubes maker:	Medion
Wine cooler:	Climadiff
Interior finish:	Teak
Single berths:	3
Double bed:	1
Cabins:	3
Toilets:	2, vacuflush
Showers:	2

Outside shower:	1x
-----------------	----

Machinery

Port engine (Brand, type, hp, gearbox):	Cummins 6BT5.9-M, 220 hp, ZF220
Main engines control (Brand and type):	Panish controls
Drive (Shaft, IPS, Jet):	Shaft drive
Shaft lubrication:	Water lubricated
Prop (Number of blades, material):	4 blads
Star engine (Brand, type, hp, gearbox):	Cummins 6BT5.9-M, 220 hp, ZF220
Generator (Brand, type, Kw):	Onan MDKAL-5567311
Bowthruster (Brand, type, elec/hyd):	Vetus
Sternthruster (Brand, type, elec/hyd):	Vetus
Electrical bilge pump:	3x Rule
Manual bilge pump:	1x whale gusher
Water pressure pump (Brand, model):	Sealand T12VDC
Hot water system:	Boiler, 68L (2021)
Heating system (brand, model, type):	Webasto Air Top - EvoM + Hot air
Trim system:	Bennet V351
Macerator pump:	Sealand T12VDC
Steering system:	Hydraulic
Deckwash:	1x
Engine hours engine 1:	1175
Engine hours engine 2:	1175
Generator hours:	762

Electrical system

House battery (Number of battery,type, total Amp, year):	3 + 1 generator
Start battery (Number of battery,type, total Amp, year):	1, Varta 230 Ah
DC system (V) AC system (V):	12V-230V
Inverter (V/W/Amp):	Mastervolt mass combi ultra 12V/3000W-150Amp
Battery charger (V/W/Amp):	Mastervolt mass combi ultra 12V/3000W-150Amp

Safety system

Fire extinguisher engine room:	2x
Gas detector:	4x
Fire alarm:	4x

Navigation system

Helm position one:	Salon
Compass:	Ritchie
Gps plotter:	Garmin GPSmap 7412
Radar screen:	Garmin GPSmap 7412
Radar :	Garmin
Depth meter:	Garmin
Log:	Garmin
VHF:	Garmin
AIS:	Garmin AIS transponder
Autopilot:	Garmin
Rudder indicator:	VDO

Helm position two:

Flyridge

Equipment

Anchor:

1x

Windlass:

Lofrans Falkon

Tender crane:

Mast with boom

Horn:

Compressor













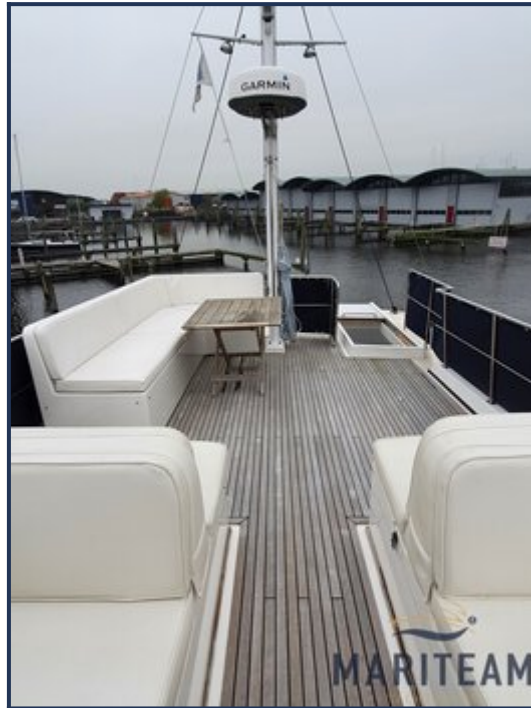


















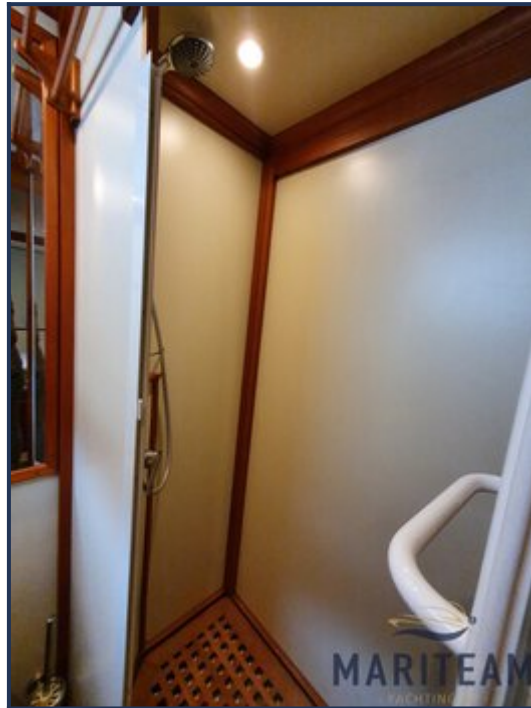










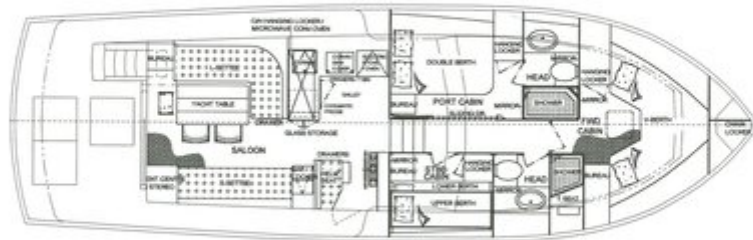








46 EU ARRANGEMENT PLAN
46#257



OM-DWG 03

These particulars are given in good faith as supplied but cannot be guaranteed and cannot be used for contracts.