



## Eastbay 43 HX "Still got the Blues"

LOA (m):	13.09 m
Beam (m):	4.01 m
Draft (m):	1.1 m
Engines:	2x 450hp Caterpillar
Cabins:	2
Homeport:	The Netherlands
Price:	€ (not set)

Grand Banks Eastbay 43 HX 'Still got the Blues' with hull number 073.

One of the most sold models from the Eastbay range built by Grand Banks Yachts. A sporty "down east" cruiser with a top of 30 knots and a cruising speed 25 knots. With a full interior of teak/walnut and spacious layout makes it a really comfortable and stylish yacht.

The "Still got the Blues" has been lovingly maintained by the 2nd owner and has been in a heated shed every winter.

## Main specifications

Model:	43 HX
LOA (m):	13.09 m
Beam (m):	4.01 m
Draft (m):	1.1 m
Year:	2002
Hull Material:	GRP
Cabins:	2
Sleeping places:	4
Number of main engine(s):	2
Power of main engine(s) (hp):	450
Brand of main engine(s):	Caterpillar
Price:	€ (not set)
VAT status:	Paid
HIN number:	MS-GNDM0073L203

## General

Name :	Still got the Blues
Shipyard:	Grand Banks
Air draft (m):	4.35
CE-category:	B
Displacement (t):	14
Hull material:	GRP
Deck material:	GRP
Superstructure material:	GRP
Deck finish:	Teak
Window material:	Single

Fuel tank (Litre and material):	1700 L Aluminium
Freshwater Tank (Liter and material):	420 L Stainless Steel
Black water tank (Litre and material):	120 L GRP

## Accommodation

Stove:	Bosch Ceran 4x
Oven:	Severin
Refrigerator:	Waeco
Interior finish:	Teak
Single berths:	2x
Double bed:	1x
Cabins:	2
Toilets:	Sealand Vacuflush
Showers:	1x

## Machinery

Port engine (Brand, type, hp, gearbox):	Caterpillar 3126B, 450 PK, Twin Disc 5061-A
Engine hours port engine:	1268
Star engine (Brand, type, hp, gearbox):	Caterpillar 3126B, 450 PK, Twin Disc 5061-A
Engine hours starboard engine:	1268
Drive (Shaft, IPS, Jet):	Shaft
Shaft lubrication:	Duramax marine
Prop (Number of blades, material):	5 blade
Generator (Brand, type, Kw):	Onan, MDKAL-5558865, 7KW
Generator hours:	415

Bowthruster (Brand, type, elec/hyd):	Vetus elec
Electrical bilge pump:	3x rule GPH2000
Manual bilge pump:	Whale Gusher MK3
Water pressure pump (Brand, model):	Paragon, PJR
Hot water system:	Seaward S-1250. 41L
Heating system (brand, model, type):	Webasto Air Top 5000D, 5KW
Trim system:	Bennett Trim Tab 2412
Macerator pump:	Sealand T12VDC
Steering system:	Hydraulic
Deckwash:	1x

## Electrical system

DC system (V) AC system (V):	12V/230V
Inverter (V/W/Amp):	Victron energy 12V/800W
Battery charger (V/W/Amp):	Promatic 50A

## Safety system

Fire extinguisher engine room:	6x
Gas detector:	3x
Fire alarm:	2x

## Navigation system

Compass:	Ritchie
Radar :	Raymarine



Depth meter:	Raymarine ST60
VHF:	Raymarine
Autopilot:	Raymarine ST6001

## Equipment

Anchor:	1x
Windlass:	Maxwell Freedom RC 800
Horn:	Compressor































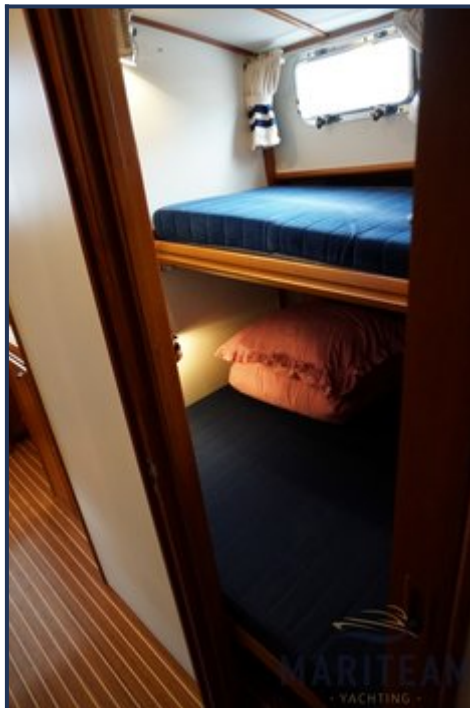










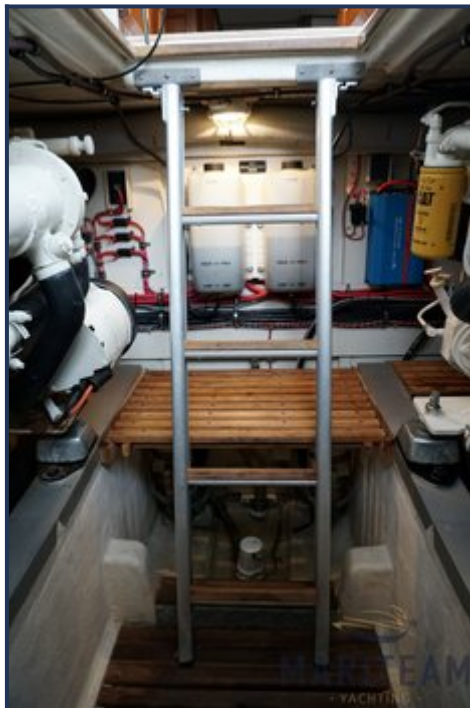






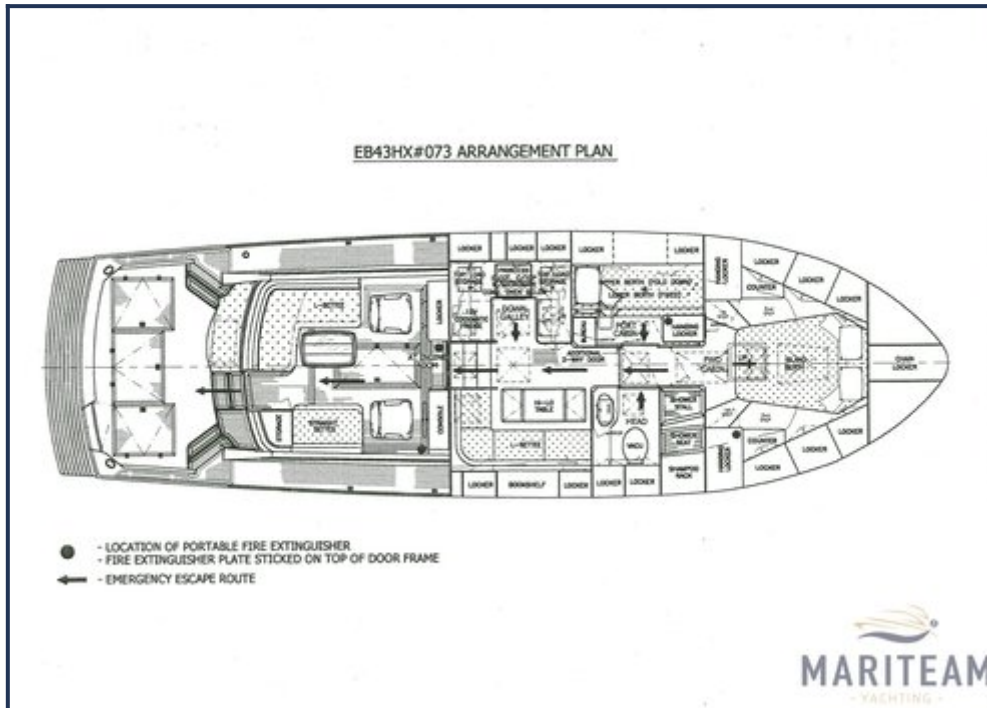












*These particulars are given in good faith as supplied but cannot be guaranteed and cannot be used for contracts.*