



Grand Banks 47 Europa 'Olibé'

LOA (m):	15.46 m
Beam (m):	4.80 m
Draft (m):	1.35 m
Shipyard:	Grand Banks
Year built:	2011
Engines:	2x 500hp Cummins
Cabins:	3
Homeport:	Italië
Price:	€ (not set)

Grand Banks 'Olibé' is with hull number 97 of the 103 total built 47 Europa's, one of the last build 47 europa. The ship has a beautiful layout with three cabins and five beds. The spacious covered aft deck is a nice place to sit with both good and bad weather. Temperature is automatically controlled by the air conditioning that can heat as well. The ship has only one owner who has maintained the ship very well. Every winter the ship is on the shore and maintenance is being done, such as: new anti-fouling and engine maintenance. In 2017, the upholstery has been renewed and the bimini top has also been renewed. If you are looking for one of the last produced Grand Banks 47 Europe's, then the 'Olibé' is certainly a 47 you should have seen.



MARITEAM

- YACHTING -

MARITEAM YACHTING

Ceresweg 20-B, 8938 BG Leeuwarden 📍 The Netherlands 📞 Phone +31 (0) 582 889254
info@mariteamyachting.nl 📧 www.mariteamyachting.nl

Main specifications

Model:	47 Europa
LOA (m):	15.46 m
Beam (m):	4.80 m
Draft (m):	1.35 m
Year:	2011
Hull Material:	GRP
Cabins:	3
Sleeping places:	5
Number of main engine(s):	2
Power of main engine(s) (hp):	500
Brand of main engine(s):	Cummins
Price:	€ (not set)
VAT status:	Paid
Draft (m):	1.35
HIN number:	MY-GNDV0097G112

General

Name :	Olibé
Shipyard:	Grand Banks
Type:	47 Europa
Length waterline (m):	15.46
Beam (m):	4.8
Year built:	2011
CE-category:	A
Hull material:	GRP
Deck material:	GRP

Superstructure material:	GRP
Deck finish:	Teak
Window material:	Single
Fuel tank (Litre and material):	2271 L Aluminium
Freshwater Tank (Liter and material):	984 L Aluminium
Black water tank (Litre and material):	291 Plastic
Antifouling (Year):	2017
Maximum speed (Kn):	23
Cruising speed (Kn):	15

Accommodation

Stove:	Miele KM 5600 EDTS 4 pits
Refrigerator:	Coolmatic RSD 115
Freezer:	Coolmatic CRF 0050
Interior finish:	Teak
Dish washer:	Fisher & Paykel DD60S16
Washing machine/Dryer:	Hoover wdyns 642 D
Single berths:	3
Double bed:	1
Cabins:	3x
Toilets:	2 elekt
Showers:	2x
Outside shower:	1x
Combi oven/microwave:	Miele m 8261-2

Machinery

Port engine (Brand, type, hp, gearbox):	Cummin, QSC8.3, 500PK, ZF marine
Trolling valve:	2x
Main engines control (Brand and type):	Cummins ETS
Drive (Shaft, IPS, Jet):	Shaft
Shaft lubrication:	Tides marine
Prop (Number of blades, material):	5 blads, brons
Star engine (Brand, type, hp, gearbox):	Cummin, QSC8.3, 500PK, ZF marine
Generator (Brand, type, Kw):	Onan, MDKBN-6240499, 11Kw
Bowthruster (Brand, type, elec/hyd):	Sidepower, SE130/250T, Elec
Electrical bilge pump:	3x Rule gph 2000
Manual bilge pump:	1x Whale gusher 10mk3
Oil change system:	Reverso GP 3013
Watermaker:	Idromar international MC2J
Water pressure pump (Brand, model):	2x Shurflo smart sensor
Hot water system:	Seaward h-2050 60L Boiler
Heating system (brand, model, type):	Dometic marine air
Airconditioning system (Brand, model):	Dometic marine air
Trim system:	Bennett
Macerator pump:	Sealand SP ts 12
Steering system:	Hydraulic
Deckwash:	1x
Engine hours engine 1:	1100
Engine hours engine 2:	1100
Generator hours:	1900

Electrical system

DC system (V) AC system (V):	12V / 230V
Battery charger (V/W/Amp):	Mastervolt 12V / 100 Amo

Safety system

Life raft:	2x 4 per
Gas detector:	3x
Fire alarm:	3x

Navigation system

Helm position one:	Salon
Compass:	Ritchie
Gps plotter:	Raymarine E120
Radar screen:	Raymarine E120
Radar :	Raymarine 4 KW
Depth meter:	Raymarine ST70
Log:	Raymarine ST70
VHF:	Raymarine 240E VHF
Autopilot:	Raymarine
Rudder indicator:	VDO
Helm position two:	Flybridge

Equipment

Anchor:	1x
Windlass:	Lofrans Falkon 1700W
Gangway:	Opacmare 499423012
Tender crane:	Steelhead marine SM800R
Tender:	Rib, 15pk Suzuki
Horn:	2x







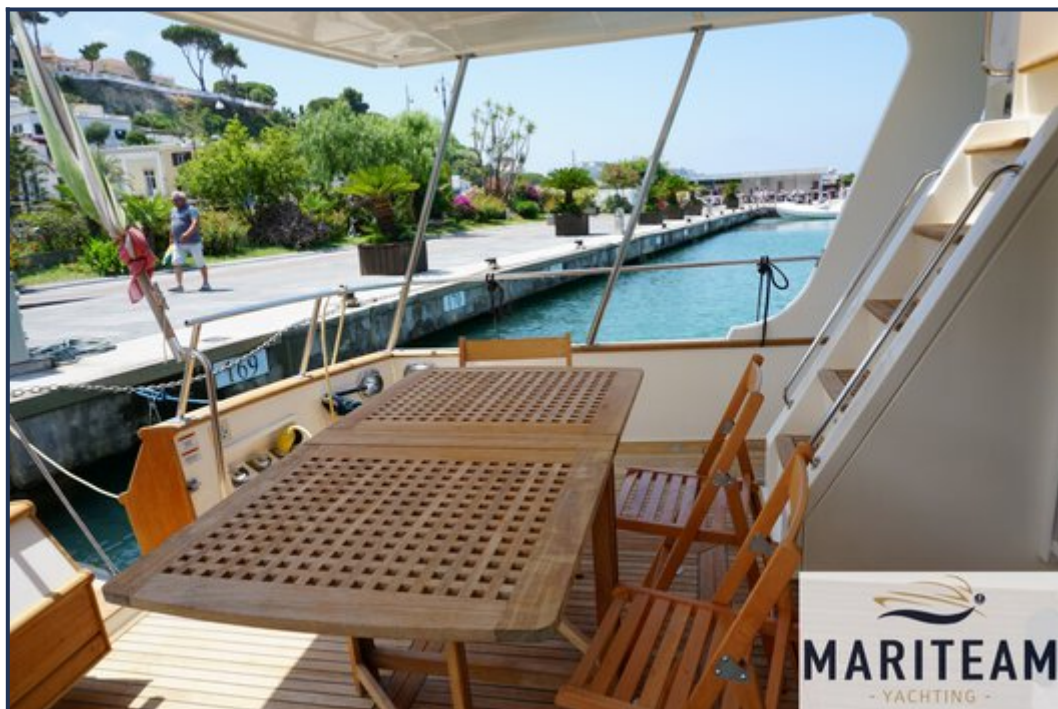
















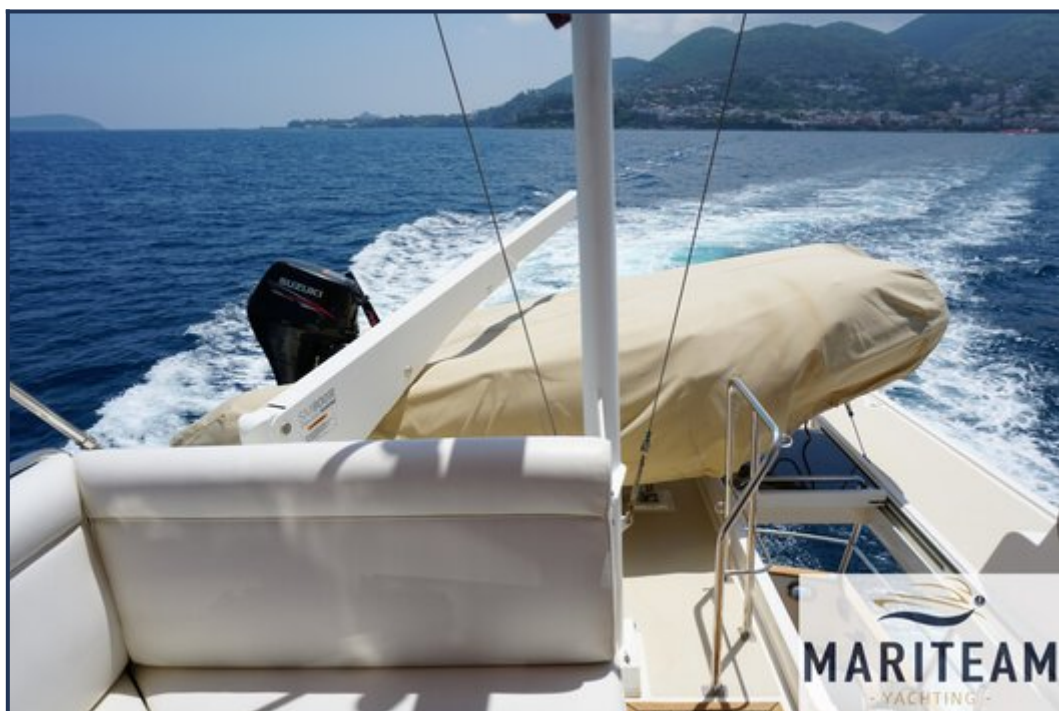




















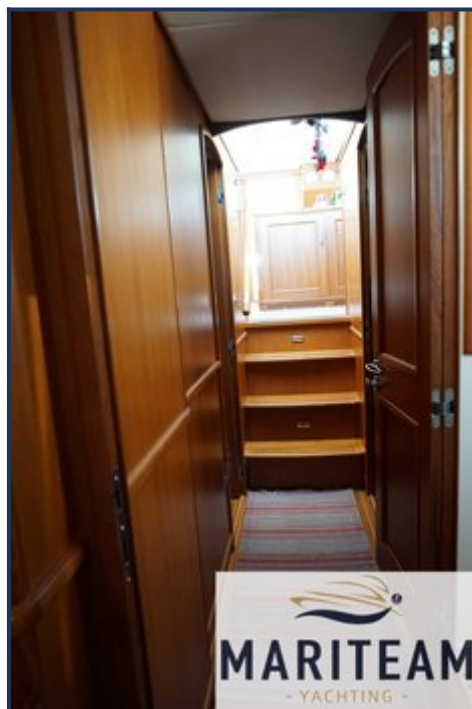


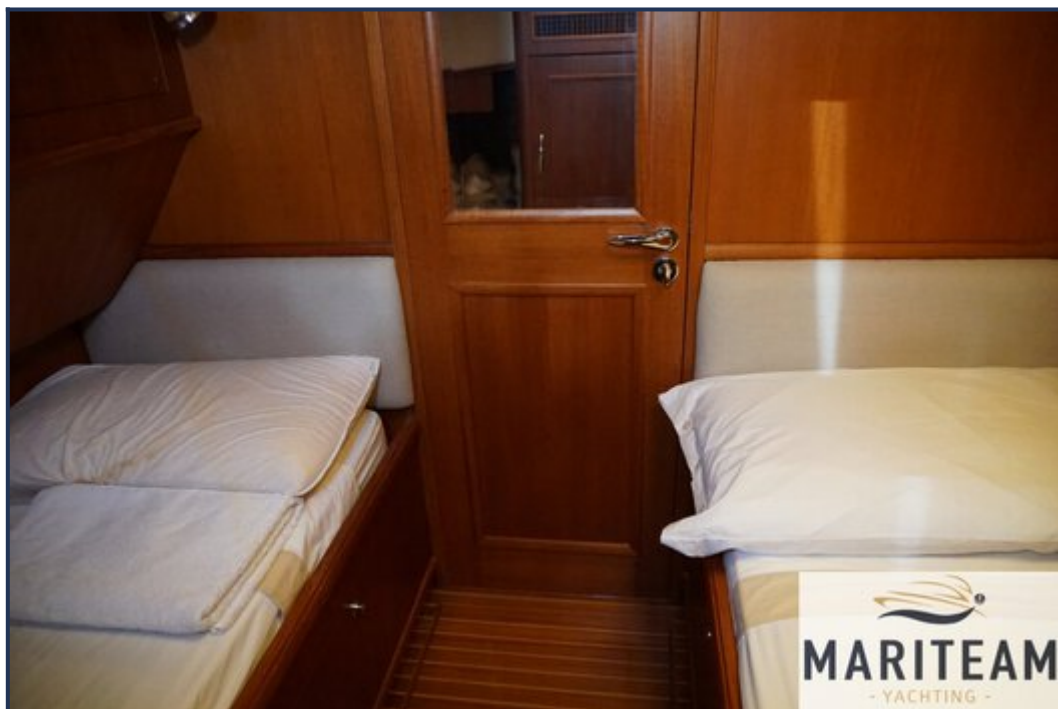






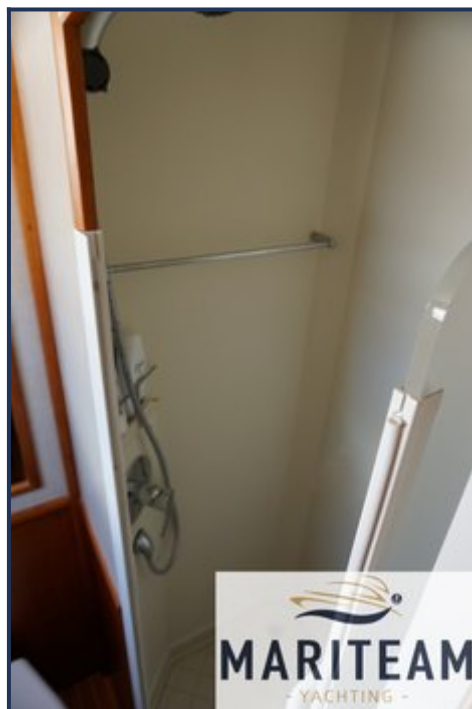






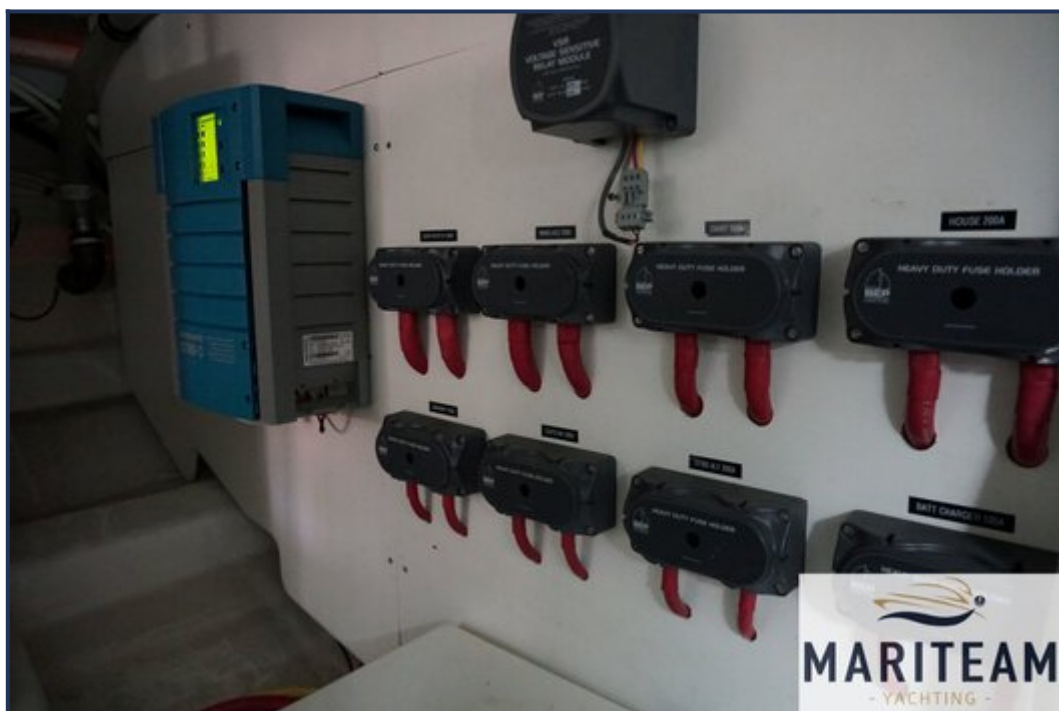




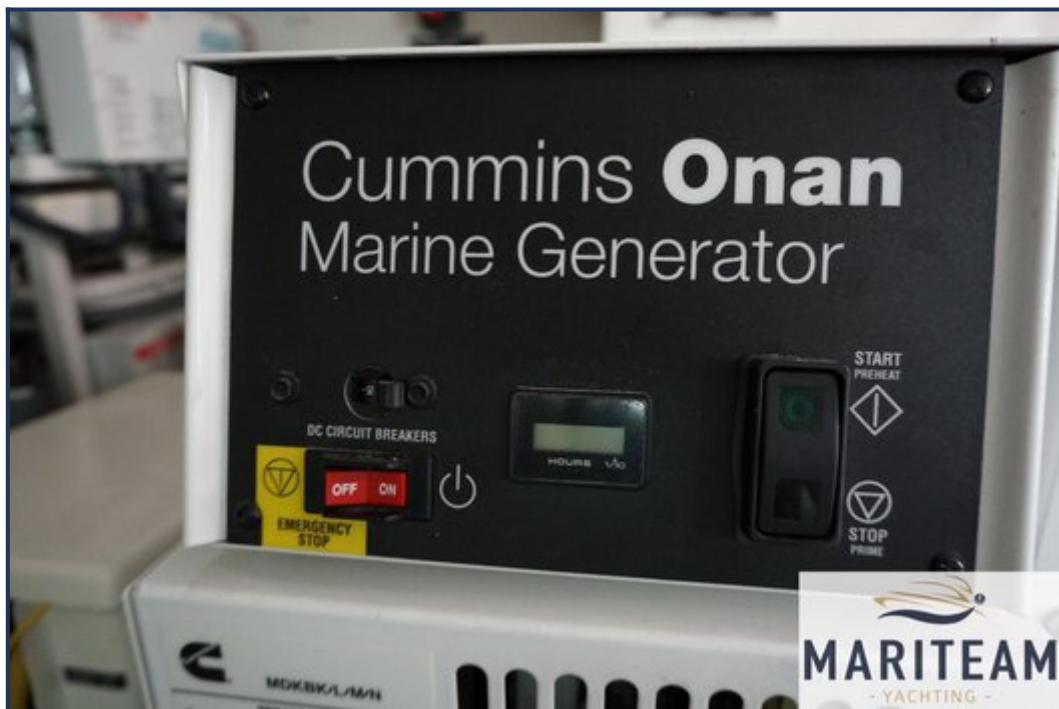




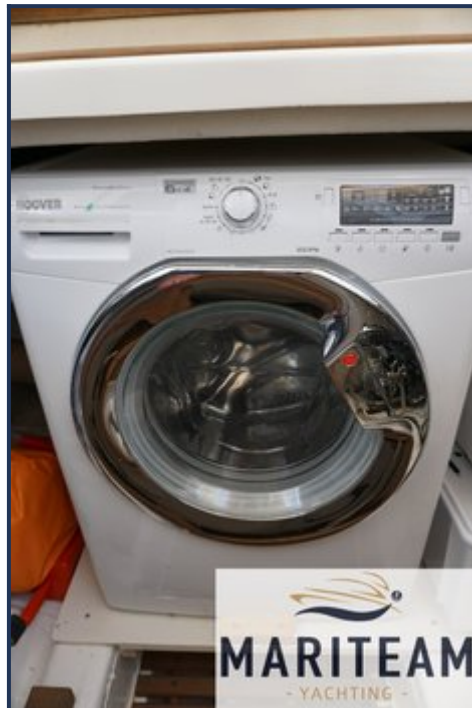














These particulars are given in good faith as supplied but cannot be guaranteed and cannot be used for contracts.