



MARITEAM

- YACHTING -



Grand Banks 46 Europa 'Oring'

| | |
|------------|----------------------|
| LOA (m): | 14.35 m |
| Beam (m): | 4.50 m |
| Draft (m): | 1.35 m |
| Engines: | 2x 426hp Caterpillar |
| Cabins: | 3 |
| Homeport: | Netherlands |
| Price: | € (not set) |

Beautiful fast-paced Grand Banks 46 Europe with three cabins and six beds. Cruising is extremely comfortable with the hydraulic stabilizers and maneuvering is simple with the hydraulic bow and stern thruster that you can use continuously. During the colder days it is easy to heat up inside the ship by means of the central heating that is nicely and inconspicuously concealed in the interior. Are you looking for a Grand Banks 46 Europe, then the Oring is definitely worth a visit.

MARITEAM YACHTING

De Draei 29, 8621 CZ Heeg 📍 The Netherlands 📞 Phone +31 (0) 582 889254

info@mariteamyachting.nl 🌐 www.mariteamyachting.nl

Main specifications

| | |
|-------------------------------|-------------------|
| Model: | 46 Europa |
| LOA (m): | 14.35 m |
| Beam (m): | 4.50 m |
| Draft (m): | 1.35 m |
| Year: | 2002 |
| Hull Material: | GRP |
| Cabins: | 3 |
| Sleeping places: | 6 |
| Number of main engine(s): | 2 |
| Power of main engine(s) (hp): | 426 |
| Brand of main engine(s): | Caterpillar |
| Price: | € (not set) |
| VAT status: | Paid |
| HIN number: | SS-GNDF 0253 i203 |

General

| | |
|--|--------------|
| Name : | Oring |
| Shipyard: | Grand Banks |
| CE-category: | A |
| Cruising speed (Kn): | 9 |
| Maximum speed (Kn): | 19 |
| Air draft (m): | 4.35 |
| Displacement (t): | 19.5 |
| Fuel tank (Litre and material): | 2271 L Steel |
| Freshwater Tank (Liter and material): | 1030 L |
| Black water tank (Litre and material): | 212 plastic |

| | |
|--------------------------|--------|
| Hull material: | GRP |
| Superstructure material: | GRP |
| Deck material: | GRP |
| Deck finish: | Teak |
| Interior finish: | Teak |
| Window material: | Single |

Accommodation

| | |
|--------------------------------------|----------------------------|
| Cabins: | 3 |
| Double bed: | 1 |
| Single berths: | 4 |
| Showers: | 2 |
| Toilets: | 2x elektrisch |
| Heating system (brand, model, type): | Maritime booster |
| Stove: | Bosch PIE645Q14E Keramisch |
| Combi oven/microwave: | Siemens HFT879 |
| Refrigerator: | MDC 110 |
| Freezer: | MDC 110 |
| Ice cubes maker: | U-line BI95BTP |
| Washing machine: | Miele W2525 |

Machinery

| | |
|---|-------------------------------------|
| Main engines control (Brand and type): | Kobelt |
| Port engine (Brand, type, hp, gearbox): | Caterpillar 3126B, 426PK, Twin disc |
| Engine hours port engine: | 2055 |

| | |
|---|-------------------------------------|
| Star engine (Brand, type, hp, gearbox): | Caterpillar 3126B, 426PK, Twin disc |
| Engine hours starboard engine: | 2055 |
| Steering system: | Hydraulisch |
| Drive (Shaft, IPS, Jet): | Shaft |
| Prop (Number of blades, material): | 4 blade brons |
| Generator (Brand, type, Kw): | Onan 7.5 KVA |
| Stabilizer system: | Naiad multisea 2 |
| Bowthruster (Brand, type, elec/hyd): | Hydraulisch 300 KGF |
| Sternthruster (Brand, type, elec/hyd): | Hydraulisch 160 KGF |
| Water pressure pump (Brand, model): | Paragon senior psr |
| Hot water system: | Maritime booster |
| Macerator pump: | Sealand T12VDC |
| Trim system: | Bennet |

Electrical system

| | |
|------------------------------|-----------------------------------|
| DC system (V) AC system (V): | 12V/230V |
| Battery charger (V/W/Amp): | 2x Victron Combi 12V/2500W-120AMP |
| Inverter (V/W/Amp): | 2x Victron Combi 12V/2500W-120AMP |

Safety system

| | |
|--------------------------------|----------------|
| Electrical bilge pump: | 3x Rule |
| Manual bilge pump: | 1x whale |
| Fire extinguisher engine room: | Sea fire FM200 |
| Fire alarm: | 3x |
| Gas detector: | 3x |

| | |
|-------|-----------------|
| Horn: | Kahlenberg S-0A |
|-------|-----------------|

Navigation system

| | |
|-------------------|---------------------|
| Compass: | Ritchie |
| Radar : | Simrad HD radar 6Kw |
| Autopilot: | Simrad AP25 |
| Rudder indicator: | VDO |
| Depth meter: | Simrad IS15 |
| VHF: | Simrad RS87 |
| AIS: | 1x |

Equipment

| | |
|-----------|----------------|
| Gangway: | Besenzoni |
| Anchor: | 1x |
| Windlass: | Lofrans Tigres |
| Deckwash: | 1x |



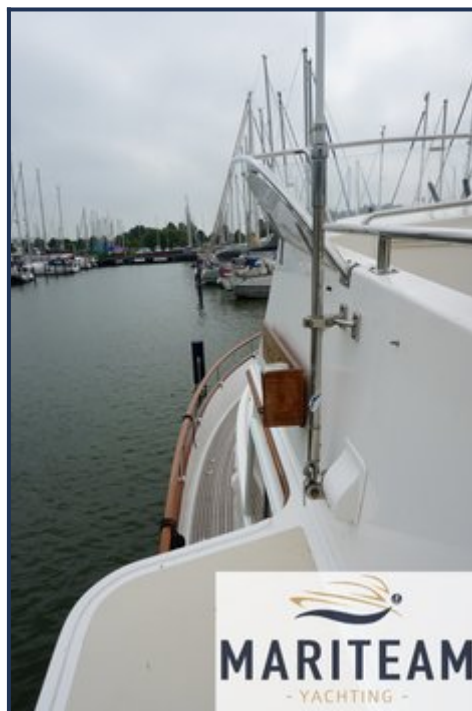






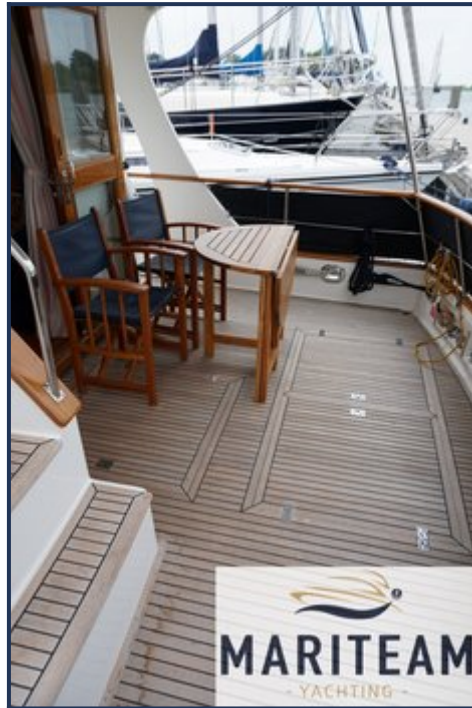








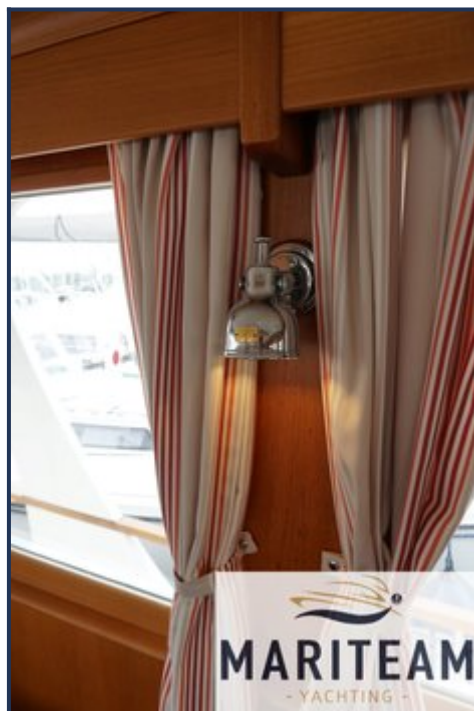






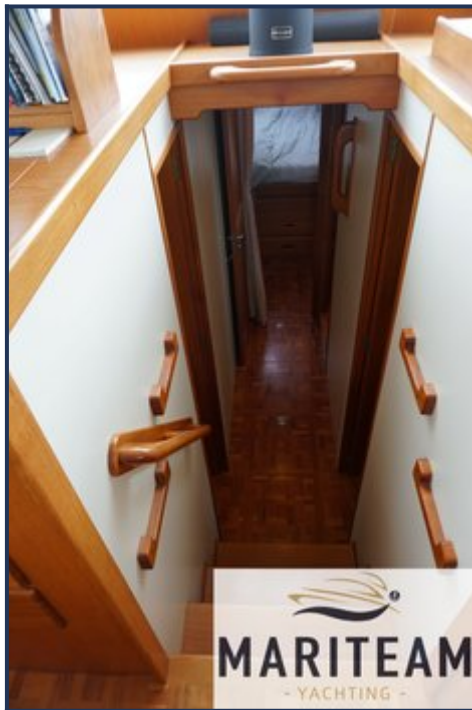










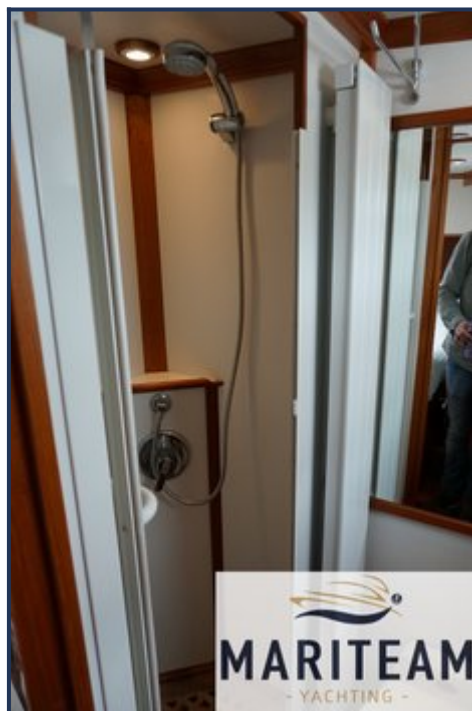


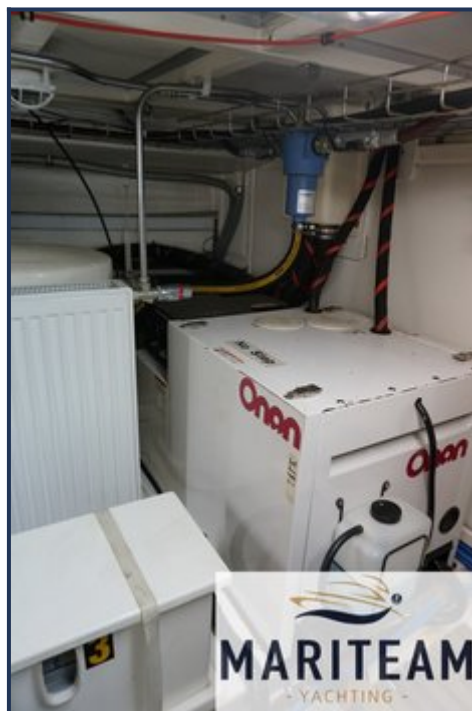


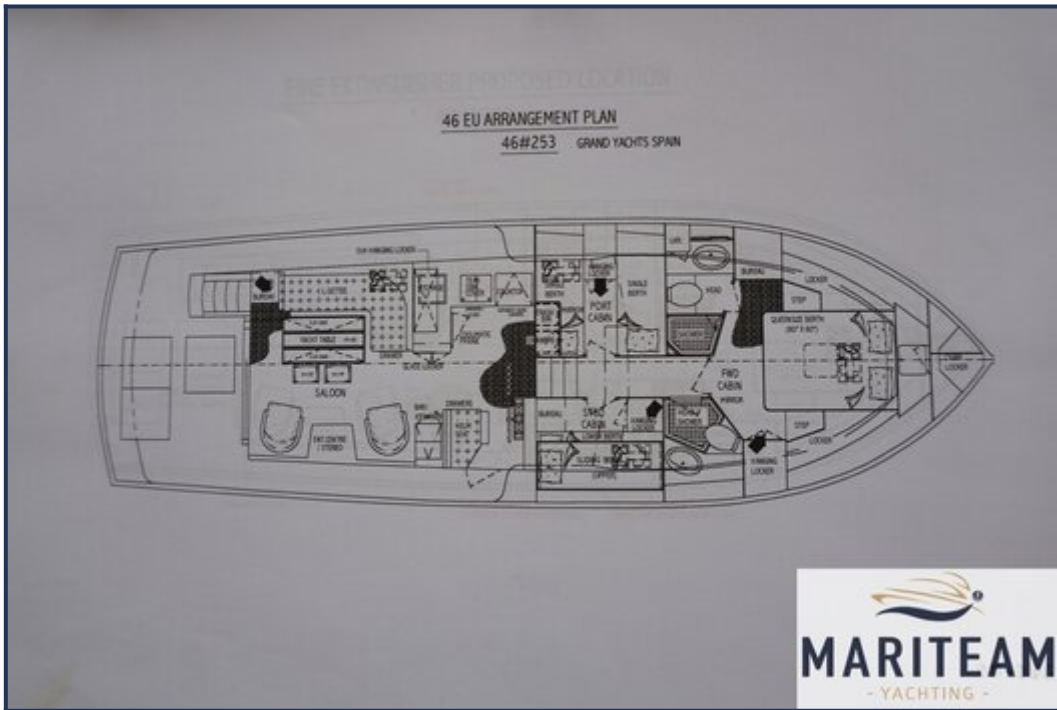












These particulars are given in good faith as supplied but cannot be guaranteed and cannot be used for contracts.