



Grand Banks 42 Classic 'AVONTURIER'

LOA (m):	13.17 m
Beam (m):	4.29 m
Draft (m):	1.35 m
Shipyard:	Grand Banks Yachts
Engines:	2x 210hp Caterpillar
Cabins:	2
Homeport:	Sales office, Heeg
Price:	€ 219,000

The Grand Banks 42 Classic 'Adventurer' from 1992 is a timeless yacht known for its power and reliability, featuring 210 hp Caterpillar engines. It boasts a central heating system for comfort during cold sea voyages, a recently installed durable Flexiteak deck from 2022 for a stylish and low-maintenance surface, and a Glomex internet receiver to stay connected during explorations on open water. Maintenance and performance improvements, including new risers and a mast with a gas spring. In short, the Grand Banks 42 Classic combines classic charm with modern amenities, making it a beloved choice for cruises on the open sea.

Main specifications

Model:	42 Classic
LOA (m):	13.17 m
Beam (m):	4.29 m
Draft (m):	1.35 m
Year:	1992
Hull Material:	GRP
Cabins:	2
Sleeping places:	5
Number of main engine(s):	2
Power of main engine(s) (hp):	210
Brand of main engine(s):	Caterpillar
Price:	€ 219,000
VAT status:	EU paid
HIN number:	GNDD1221H192

General

Name :	Avonturier
Shipyard:	Grand Banks Yachts
Type:	42 classic
Length overall (m):	13.17
Beam (m):	4.29
Air draft (m):	4.20 top of windshield
CE-category:	B
Displacement (t):	15.68
Hull material:	GRP
Deck material:	GRP

Superstructure material:	GRP
Deck finish:	Flexiteak
Window material:	Single Safety glas
Fuel tank (Litre and material):	2x 1100L
Freshwater Tank (Liter and material):	3x 300L
Black water tank (Litre and material):	1x 200L
Antifouling (Year):	2023
Maximum speed (Kn):	20
Cruising speed (Kn):	12

Accommodation

Stove:	3 pit induction cooktop (Defect)
Refrigerator:	Friac de Luxe
Freezer:	Cooling element under the bench seat
Interior finish:	Teak
Washing machine:	Candy (2020)
Single berths:	3x
Double bed:	1x
Cabins:	2x
Toilets:	1x electric, 1x manual
Showers:	2x
Outside shower:	1x
Combi oven/microwave:	Combi Oven Gränslos

Machinery



Port engine (Brand, type, hp, gearbox):	Caterpillar, 3208, 210pk
Drive (Shaft, IPS, Jet):	Drive shaft
Star engine (Brand, type, hp, gearbox):	Caterpillar, 3208, 210pk
Generator (Brand, type, Kw):	Onan 5
Bowthruster (Brand, type, elec/hyd):	Side Power 8.7pk
Hot water system:	Kabola
Heating system (brand, model, type):	Kabola, Central heating
Macerator pump:	Johnson Pump
Deckwash:	Located at the rear of the ship
Engine hours engine 1:	5120
Engine hours engine 2:	5120
Generator hours:	492

Electrical system

House battery (Number of battery,type, total Amp, year):	4x Gel accu's 210 Ah 2019
Start battery (Number of battery,type, total Amp, year):	2x 2022 + 1x generator
Bowthruster battery (Number of battery,type, total Amp, year):	1x Optima Redtop 2023
DC system (V) AC system (V):	12V/220V
Inverter (V/W/Amp):	Victron Phoenix Multiplus 12V/2000/100
Battery charger (V/W/Amp):	Victron Phoenix Multiplus 12V/2000/100

Safety system

High water alarm:	present
Radar reflector:	present



Navigation system

Compass:	Danforth Constellation
Gps plotter:	Simrad
Radar screen:	Simrad
Radar :	MD-300/3c3
Depth meter:	Simrad IS20
Log:	Simrad IS20
Wind meter :	Simrad VMG IS20
VHF:	Icom IC-M423
AIS:	Simrad
Autopilot:	Simrad AP48
Rudder indicator:	Simrad

Equipment

Anchor:	1x with reserve
Windlass:	Lofrans Tigres, electric 60m chain
Tender crane:	Pully system on boom
Tender:	Highfield 2.60M Mercury 6pk
Window ventilation:	Sliding and tilting windows
Horn:	1 x Marco Brescia

















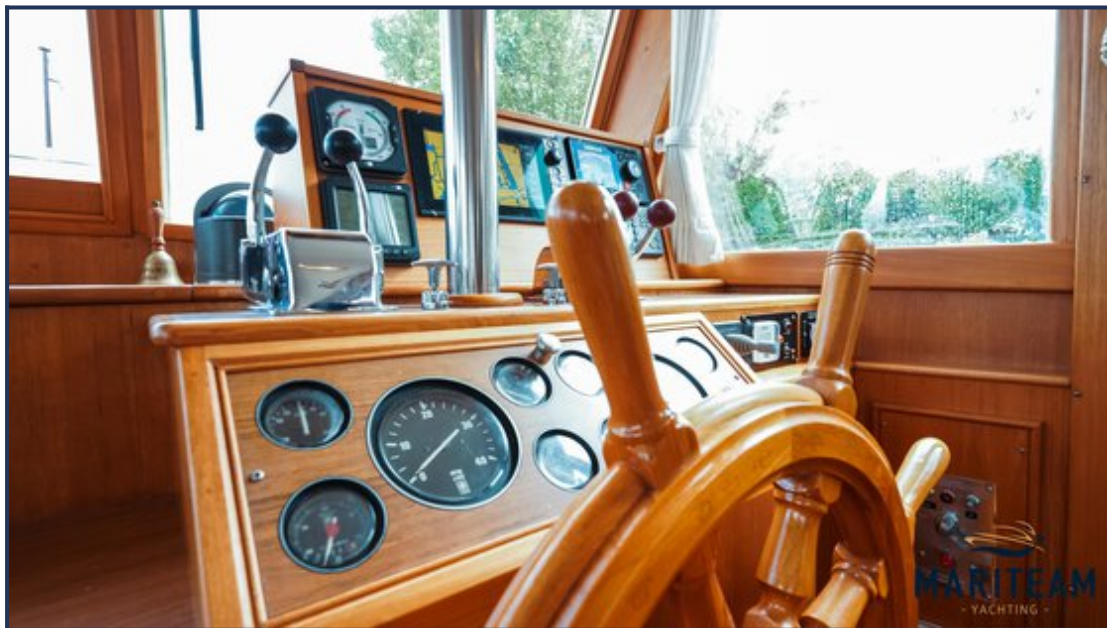




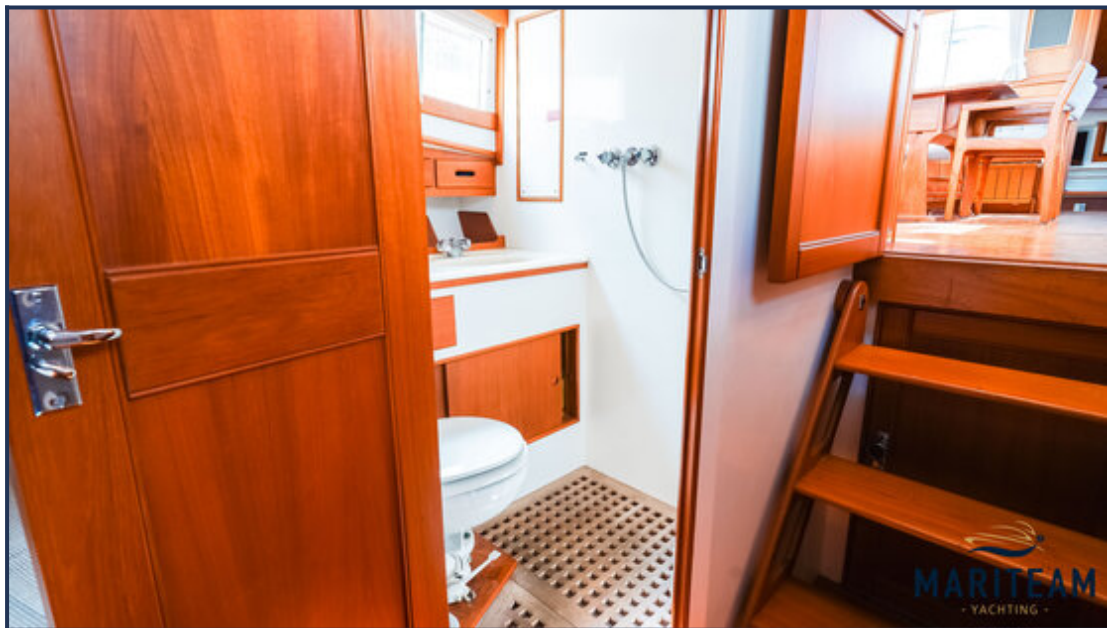








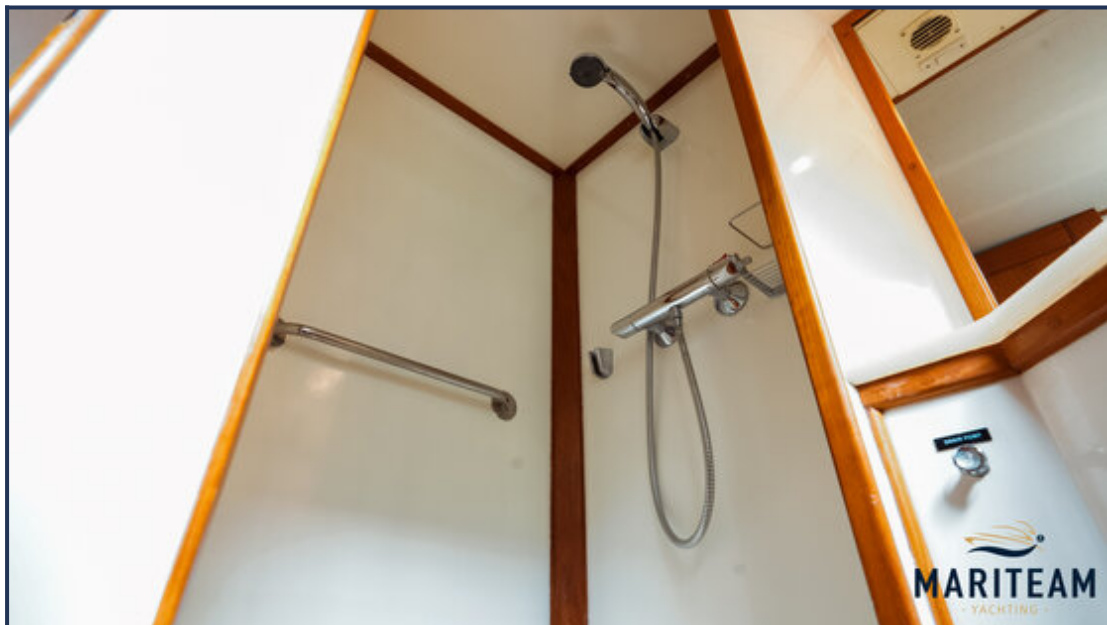




















These particulars are given in good faith as supplied but cannot be guaranteed and cannot be used for contracts.