



## Grand Banks 42 Motoryacht 'OCTANT'

LOA (m):	12.74 m
Beam (m):	4.18 m
Draft (m):	1.3 m
Shipyard:	Grand Banks Yachts
Engines:	2x 135hp Ford
Cabins:	2
Homeport:	Frankrijk, Golfe-Juan
Price:	€ 185,000

The 1990 Grand Banks 42 Motoryacht 'Octant' is a classic vessel that combines traditional charm with modern comforts. It has a efficient 135hp Ford Lehman engine, dual-engine configuration for smooth sailing. This combined with a well-designed interior and plenty of natural light, climate control for year-round comfort, and a thoughtful layout with comfortable cabins. Outside, it maintains a classic look with teak decks and a flybridge for scenic views. Overall, 'Octant' offers a perfect blend of tradition and modern convenience for a luxurious cruising experience.

## Main specifications

Model:	42 Motoryacht
LOA (m):	12.74 m
Beam (m):	4.18 m
Draft (m):	1.3 m
Year:	1990
Hull Material:	GRP
Cabins:	2
Sleeping places:	4
Number of main engine(s):	2
Power of main engine(s) (hp):	135
Brand of main engine(s):	Ford
Price:	€ 185,000
VAT status:	Paid, no proof
Draft (m):	1.3m
HIN number:	GNDD1170G091

## General

Name :	Octant
Shipyard:	Grand Banks Yachts
Type:	42 motoryacht
Length overall (m):	12.74
Air draft (m):	4.8
Displacement (t):	16.97
Deck material:	Teak
Superstructure material:	GRP
Deck finish:	Teak

Fuel tank (Litre and material):	2300L
Freshwater Tank (Liter and material):	1000L
Black water tank (Litre and material):	170L
Maximum speed (Kn):	10 knots
Cruising speed (Kn):	7 knots

## Accommodation

Stove:	Princess Electric
Microwave:	Combi, microwave and grill
Oven:	Princess Electric
Refrigerator:	Original Grand Banks
Freezer:	Ice Box
Ice cubes maker:	Uline
Interior finish:	Mahogany / Teak
Washing machine:	present
Dryer:	present
Washing machine/Dryer:	present
Single berths:	2x
Double bed:	1
Toilets:	2x
Showers:	2x
Outside shower:	present
Combi oven/microwave:	Microwave/ grill

## Machinery



Port engine (Brand, type, hp, gearbox):	Ford Lehman SP 135Hp
Main engines control (Brand and type):	Morse
Drive (Shaft, IPS, Jet):	Shaft
Shaft lubrication:	Water
Prop (Number of blades, material):	3 blade prop (1 spare)
Star engine (Brand, type, hp, gearbox):	Ford Lehman SP 135Hp
Generator (Brand, type, Kw):	Onan 6.5 Kw
Electrical bilge pump:	Rule 2000 GPH
Manual bilge pump:	present
Oil change system:	present
Watermaker:	present
Water pressure pump (Brand, model):	Jabsco Dual Pump
Hot water system:	Raritan 50L electric + engine loop
Heating system (brand, model, type):	Webasto 20000BTU
Airconditioning system (Brand, model):	Webasto 20000BTU (not installed)
Steering system:	Cable
Engine hours engine 1:	2500
Engine hours engine 2:	2500
Generator hours:	1380

## Electrical system

House battery (Number of battery,type, total Amp, year):	1x 180Amp (generator)
Start battery (Number of battery,type, total Amp, year):	2x 225Amp
DC system (V) AC system (V):	12V/ 220V
Battery charger (V/W/Amp):	3x20 Amp outputs

## Safety system

Fire extinguisher engine room:	5 kg extinguisher in engine room
Life raft:	6 person, 24 hours, valid until 7/2024

## Navigation system

Radar screen:	Raymarine
Depth meter:	present
Autopilot:	Navico

## Equipment

Anchor:	Plate 2x 60m of 14mm chain
Windlass:	60m, 14mm chain
Gangway:	Hydraulic Gangway
Tender crane:	Davits on Transom
Tender:	Zodiac AX2, 5CV Mercury
Deck shower:	present
Search light:	Handheld
Horn:	present







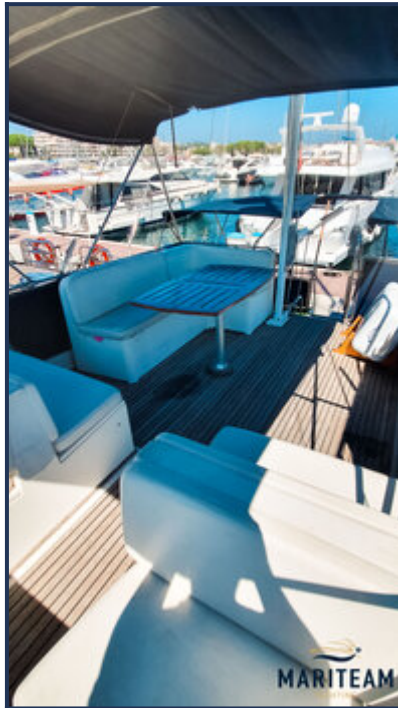




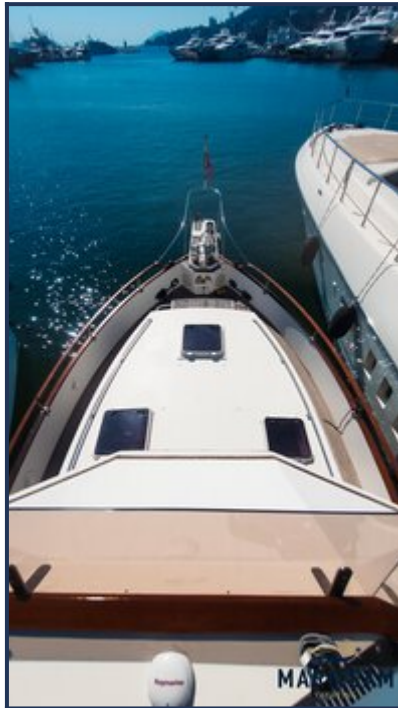




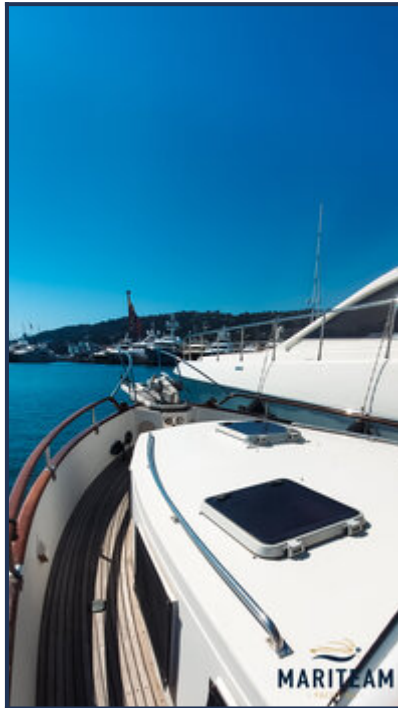














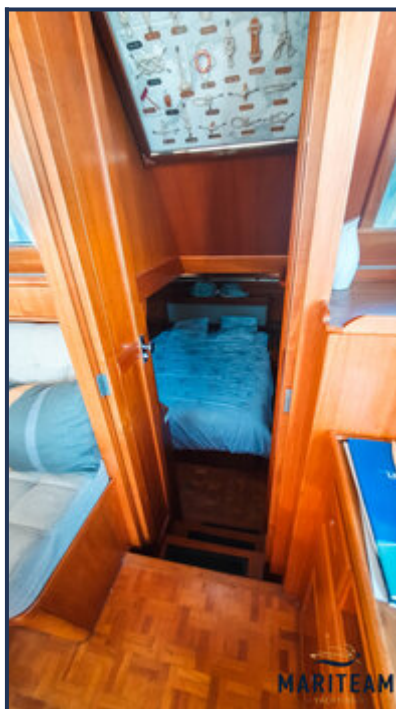
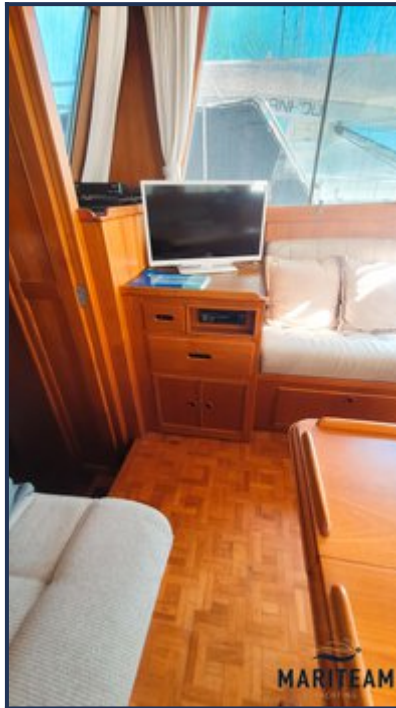


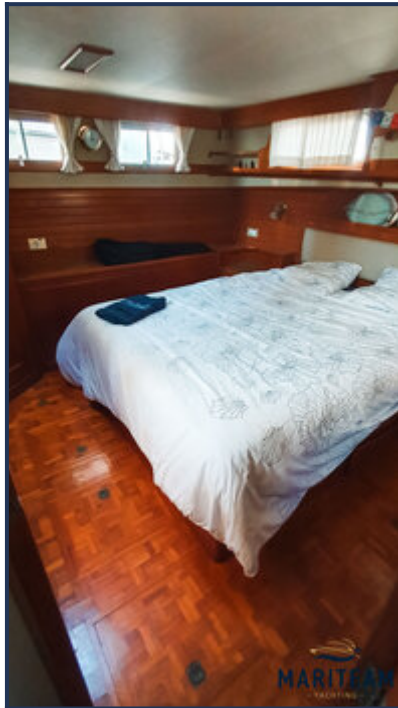


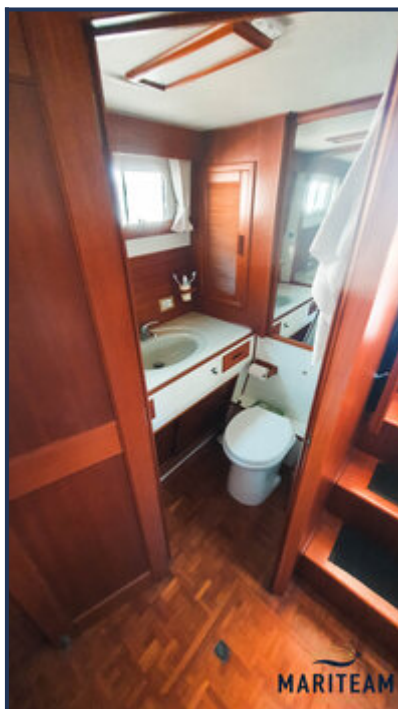


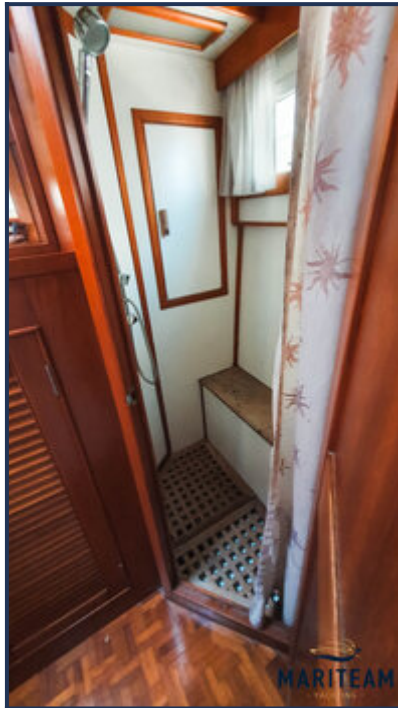




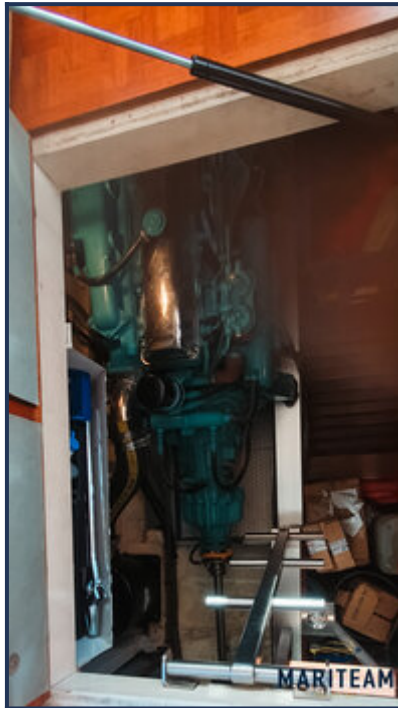






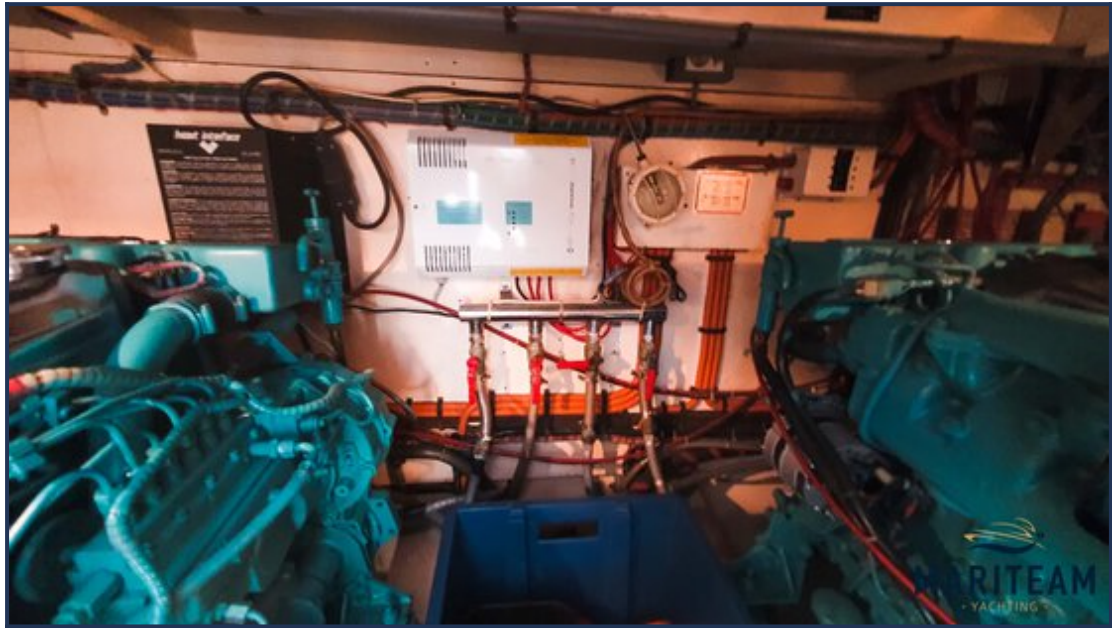














*These particulars are given in good faith as supplied but cannot be guaranteed and cannot be used for contracts.*