



Grand Banks Eastbay 43 HX 'WATERDANS'

LOA (m):	13.11 m
Beam (m):	4.01 m
Draft (m):	1.1 m
Shipyard:	Grand Banks
Year built:	2002
Engines:	2x 450hp Caterpillar
Cabins:	2
Homeport:	Sales office, Heeg
Price:	€ (not set)

The Eastbay 43 HX 'Waterdans' is a popular Grand Banks model designed by Ray Hunt. With sleek lines and a cruising speed of 20 knots, it is a comfortable "down east" cruiser. The interior, featuring teak-walnut finishes, offers space and style. Well-maintained and stored in an insulated shed, it features a beautiful cockpit, cozy helm station, two 450 hp Caterpillar engines, a bow thruster, and Raymarine navigation. Below deck, there is a kitchen, dinette, guest cabin, and a master cabin with a double bed.

Main specifications

Model:	Eastbay 43 HX
LOA (m):	13.11 m
Beam (m):	4.01 m
Draft (m):	1.1 m
Year:	2002
Hull Material:	GRP
Cabins:	2
Sleeping places:	4
Number of main engine(s):	2
Power of main engine(s) (hp):	450
Brand of main engine(s):	Caterpillar
Price:	€ (not set)
VAT status:	EU Payed
Draft (m):	1.1
HIN number:	MS-GNDM0073L203

General

Name :	Waterdans
Shipyard:	Grand Banks
Type:	Eastbay 43 HX
Length overall (m):	13.11
Length waterline (m):	12.09
Beam (m):	4.01
Air draft (m):	4.35
Year built:	2002
CE-category:	B

Displacement (t):	14
Hull material:	GRP
Superstructure material:	GRP
Deck finish:	Teak
Window material:	Single safety glass
Fuel tank (Litre and material):	1700 L Aluminium
Freshwater Tank (Liter and material):	420 L Stainless Steel (2021)
Black water tank (Litre and material):	120 L GRP

Accommodation

Stove:	Bosch Ceran 4 x
Oven:	Severin
Refrigerator:	Waeco
Interior finish:	Teak
Single berths:	2 x
Double bed:	1 x
Cabins:	2
Toilets:	Sealand Vacuflush
Showers:	1 x
Outside shower:	1 x

Machinery

Port engine (Brand, type, hp, gearbox):	Caterpillar 3126B, 450 PK, Twin Disc 5061-A
Drive (Shaft, IPS, Jet):	Drive shaft
Shaft lubrication:	Duramax marine

Prop (Number of blades, material):	2 x 5 blade
Star engine (Brand, type, hp, gearbox):	Caterpillar 3126B, 450 PK, Twin Disc 5061-A
Generator (Brand, type, Kw):	Onan, MDKAL-5558865, 7KW
Bowthruster (Brand, type, elec/hyd):	Vetus elektric 9512D (2021)
Electrical bilge pump:	3x rule GPH2000
Manual bilge pump:	Whale Gusher MK3
Water pressure pump (Brand, model):	Paragon, PJR
Hot water system:	Seaward S-1250. 41L
Heating system (brand, model, type):	Webasto Air Top 5000D, 5KW
Trim system:	Bennett Trim Tab 2412
Macerator pump:	Sealand T12VDC
Steering system:	Hydraulic
Deckwash:	1 x
Engine hours engine 1:	1692
Engine hours engine 2:	1688
Generator hours:	456

Electrical system

DC system (V) AC system (V):	12V/230V
Inverter (V/W/Amp):	Mastervolt Combi 12/3000-150
Battery charger (V/W/Amp):	Mastervolt Combi 12/3000-150

Safety system

Fire extinguisher engine room:	6 x Mabo-Meiss (2021)
Life raft:	Arimar, approved until 2024

Gas detector:	3 x
Fire alarm:	2 x

Navigation system

Helm position one:	Saloon
Compass:	Ritchie
Radar :	Raymarine
Depth meter:	Raymarine ST60
Wind meter :	Raymarine (2022)
VHF:	Icom ICM 400 + Cobra Marine MR HH475 BT EU
Autopilot:	Raymarine ST6001

Equipment

Anchor:	1 x
Windlass:	Maxwell Freedom RC 800
Horn:	Compressor





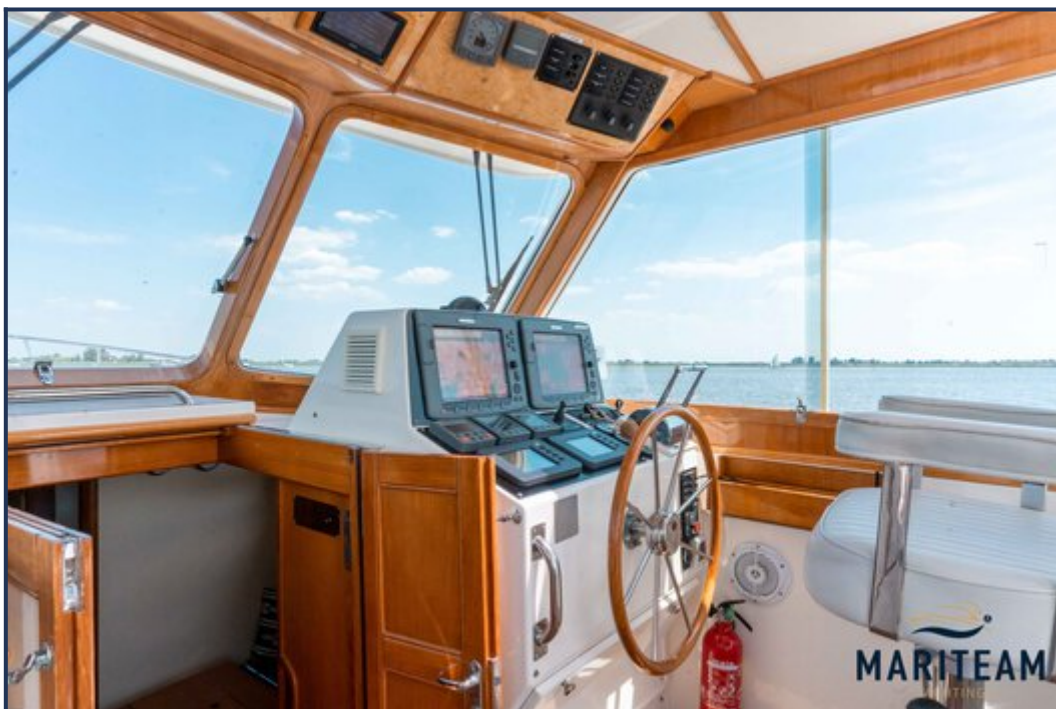










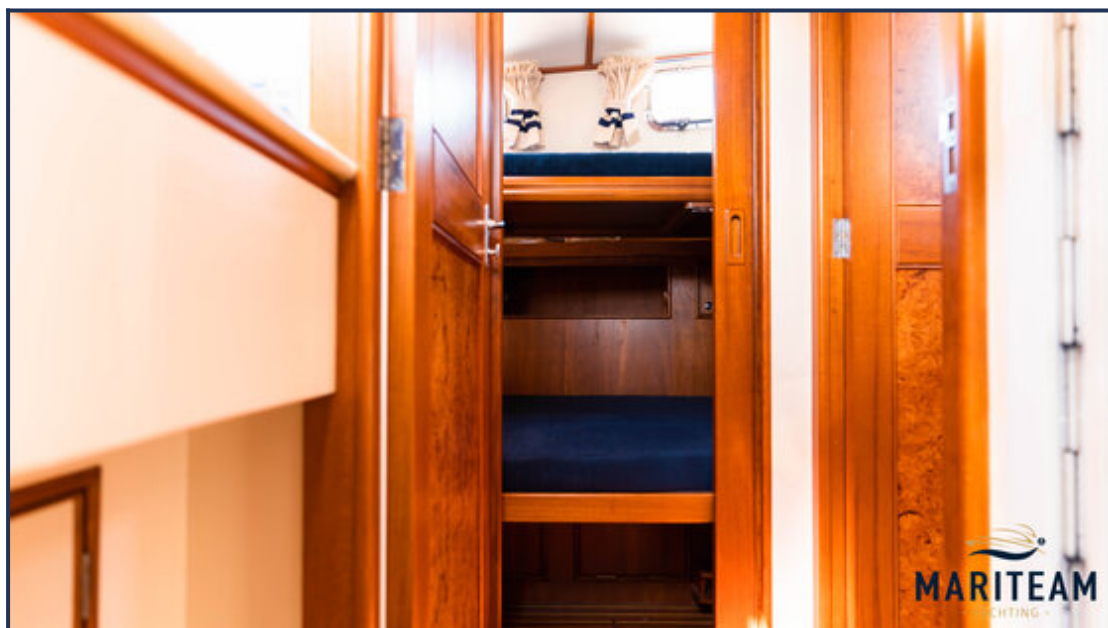


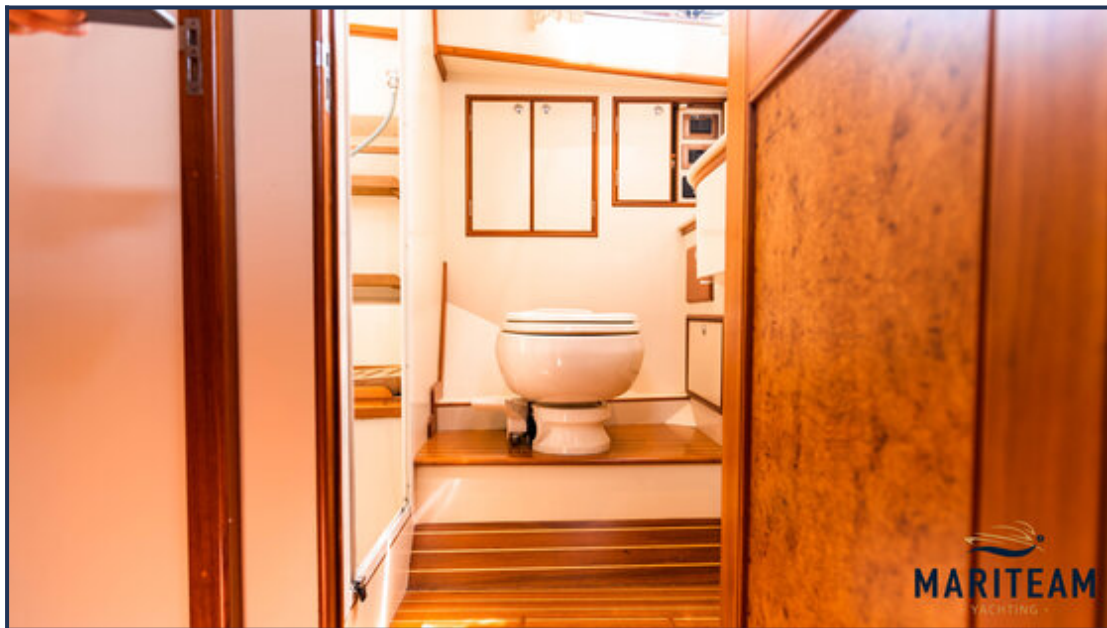




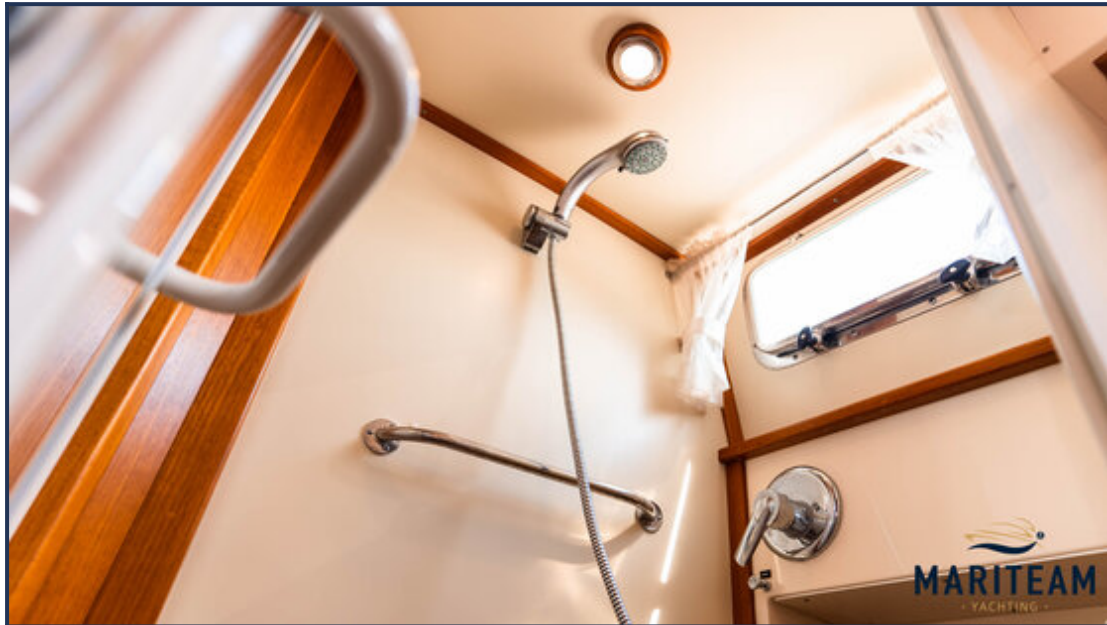


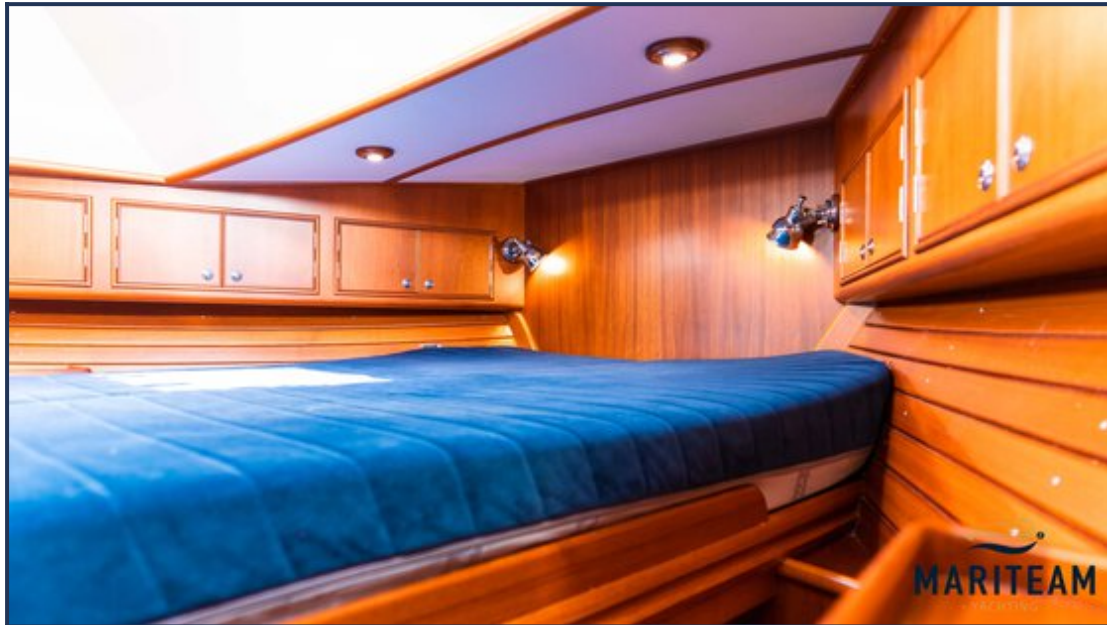




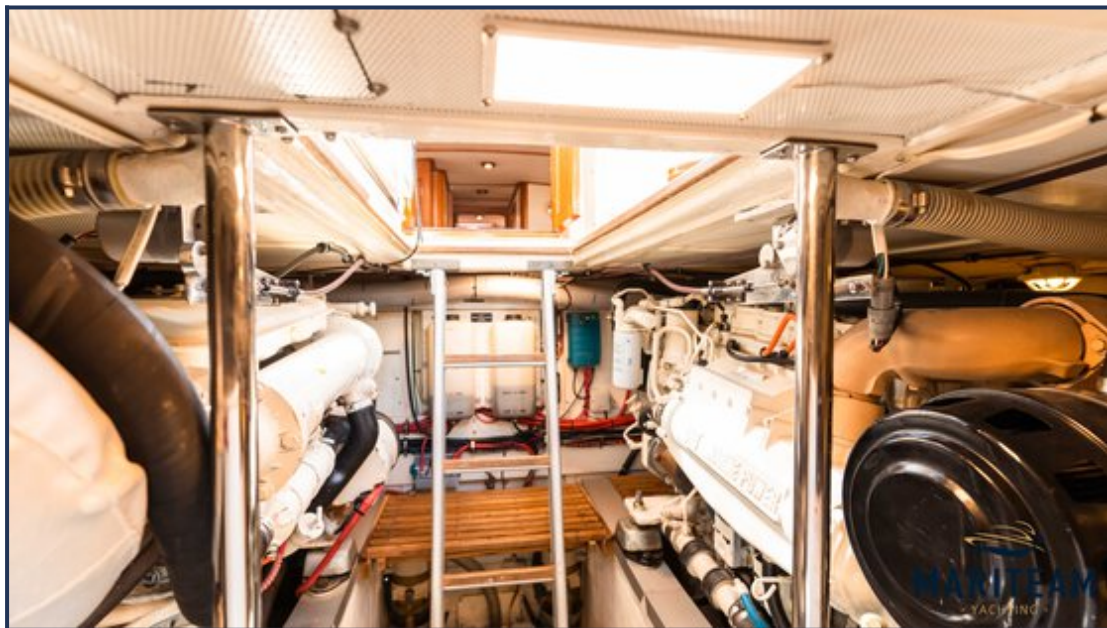




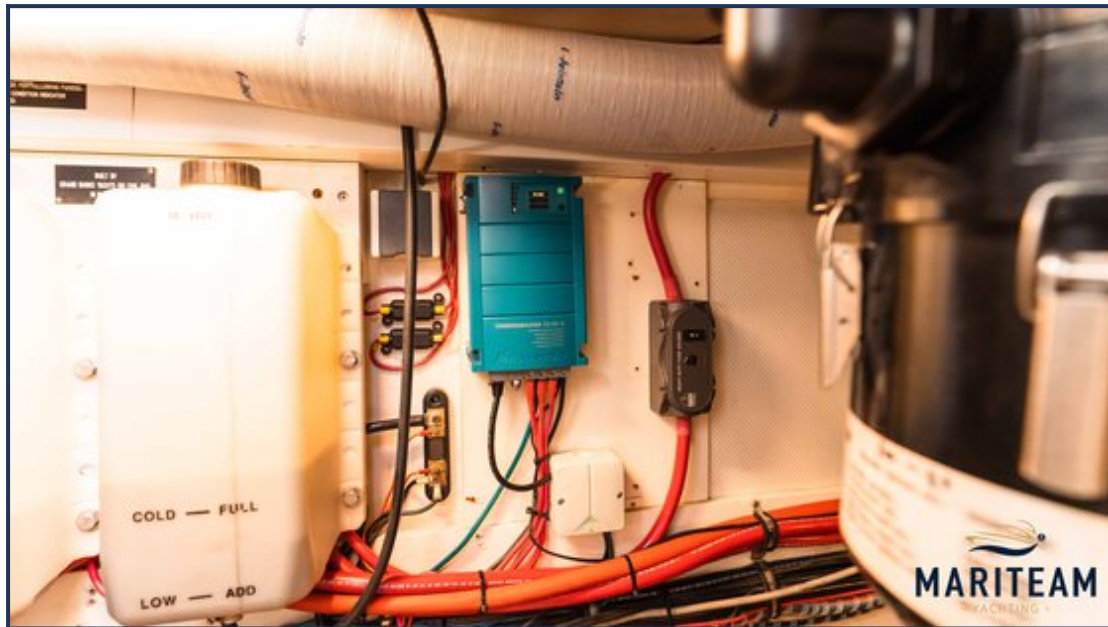


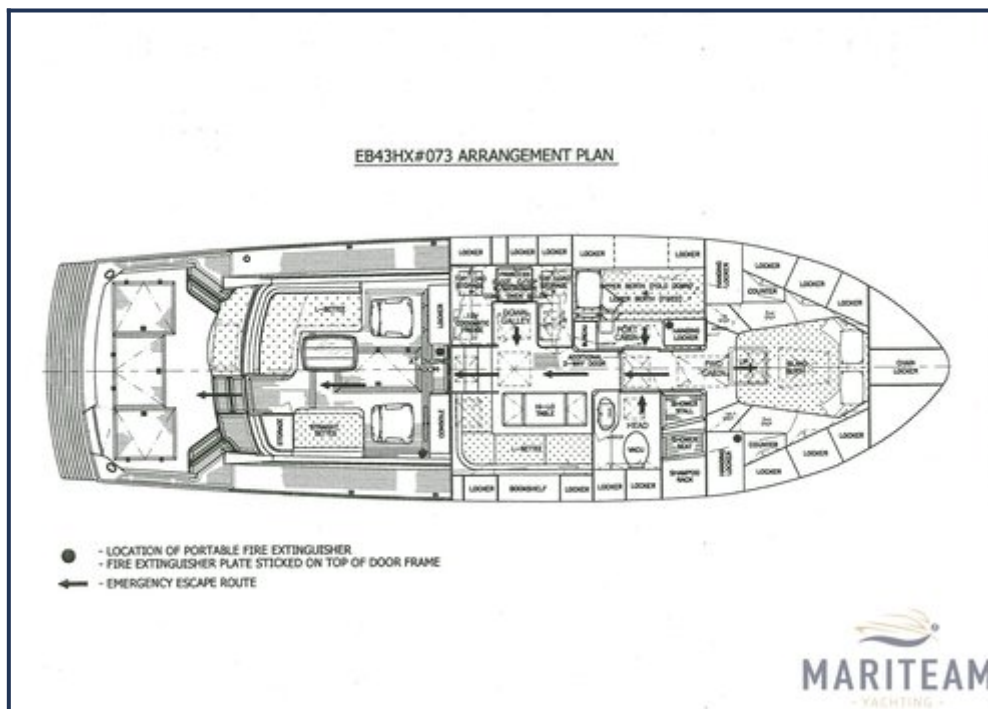












These particulars are given in good faith as supplied but cannot be guaranteed and cannot be used for contracts.