



Grand Banks 36 Sedan 'FAITH'

LOA (m):	11.23 m
Beam (m):	3.86 m
Draft (m):	1.22 m
Shipyard:	Grand Banks
Year built:	1993
Engines:	2x 250hp Cummins
Cabins:	2
Homeport:	Sales office, Heeg
Price:	€ 179,000

The Grand Banks 36 Sedan 'FAITH' with hull number 1053 is a yacht that is very unique, and only a few of them have been built. The 'FAITH's' two 250hp Cummins engines provide a maximum speed of 18 knots. But cruising quietly is also a pleasure with the 'FAITH,' with a consumption of 10 liters per hour at lower hull speeds. The combination of the two 250hp engines in the 36 sedan line is what makes it such a rare vessel. Whether cruising or at anchor, 'FAITH' promises a mix of traditional charm and contemporary comfort for an unforgettable journey on the water.

Main specifications

Model:	36 Sedan
LOA (m):	11.23 m
Beam (m):	3.86 m
Draft (m):	1.22 m
Year:	1993
Hull Material:	GRP
Cabins:	2
Sleeping places:	4
Number of main engine(s):	2
Power of main engine(s) (hp):	250
Brand of main engine(s):	Cummins
Price:	€ 179,000
VAT status:	Paid
Draft (m):	1.22
HIN number:	GNDC1053G394

General

Name :	FAITH
Shipyard:	Grand Banks
Type:	36 Sedan
Length overall (m):	11.23
Length waterline (m):	10.72
Beam (m):	3.86
Air draft (m):	3.7
Year built:	1993
Displacement (t):	12

Hull material:	GRP
Deck material:	GRP
Superstructure material:	GRP
Deck finish:	Teak
Window material:	Single
Fuel tank (Litre and material):	1515 L Steal
Freshwater Tank (Liter and material):	379 L
Antifouling (Year):	2023
Maximum speed (Kn):	18
Cruising speed (Kn):	8

Accommodation

Stove:	princess ceran
Refrigerator:	Isotherm 1130BB1MK0000
Interior finish:	Teak
Single berths:	2x
Double bed:	1x
Cabins:	2x
Toilets:	1x electric Groco
Showers:	1x
Combi oven/microwave:	Sharp R953

Machinery

Port engine (Brand, type, hp, gearbox):	Cummins, 6BTA 5.9, 250hp, Twin Disc
Main engines control (Brand and type):	Kobelt single lever

Drive (Shaft, IPS, Jet):	Shaft drive
Shaft lubrication:	Waterlubricated
Prop (Number of blades, material):	3 blade
Star engine (Brand, type, hp, gearbox):	Cummins, 6BTA 5.9, 250hp, Twin Disc
Generator (Brand, type, Kw):	Fischer Panda , 3,5 KW
Bowthruster (Brand, type, elec/hyd):	Sidepower, electric
Electrical bilge pump:	2x Rule 2000 GPH
Manual bilge pump:	1x whale gusher
Water pressure pump (Brand, model):	1x Paragon PJR-A
Hot water system:	Boiler Seaward 40 L
Heating system (brand, model, type):	Eberspacher airtronic M D4, 4KW
Trim system:	Boat leveler CO
Steering system:	Hydraulic
Deckwash:	1x
Engine hours engine 1:	2717 (total: 3325, New clock installed)
Engine hours engine 2:	3327
Generator hours:	687

Electrical system

Bowthruster battery (Number of battery,type, total Amp, year):	Varta 12v 230Ah
DC system (V) AC system (V):	12V / 230V
Inverter (V/W/Amp):	Victron
Battery charger (V/W/Amp):	Mastervolt powercharger 12V / 40Amp



Navigation system

Helm position one:	Saloon
Compass:	Danforth
Gps plotter:	Raymarine axiom 12 2020
Radar screen:	Raymarine axiom 12 2020
Radar :	Raymarine 2 KW
Depth meter:	Raymarine st60+ tridata
Log:	Raymarine st60+ tridata
VHF:	Navman 7110 + Raymarine ray VHF
AIS:	present
Autopilot:	Raytheon ST6000+
Helm position two:	Flybridge

Equipment

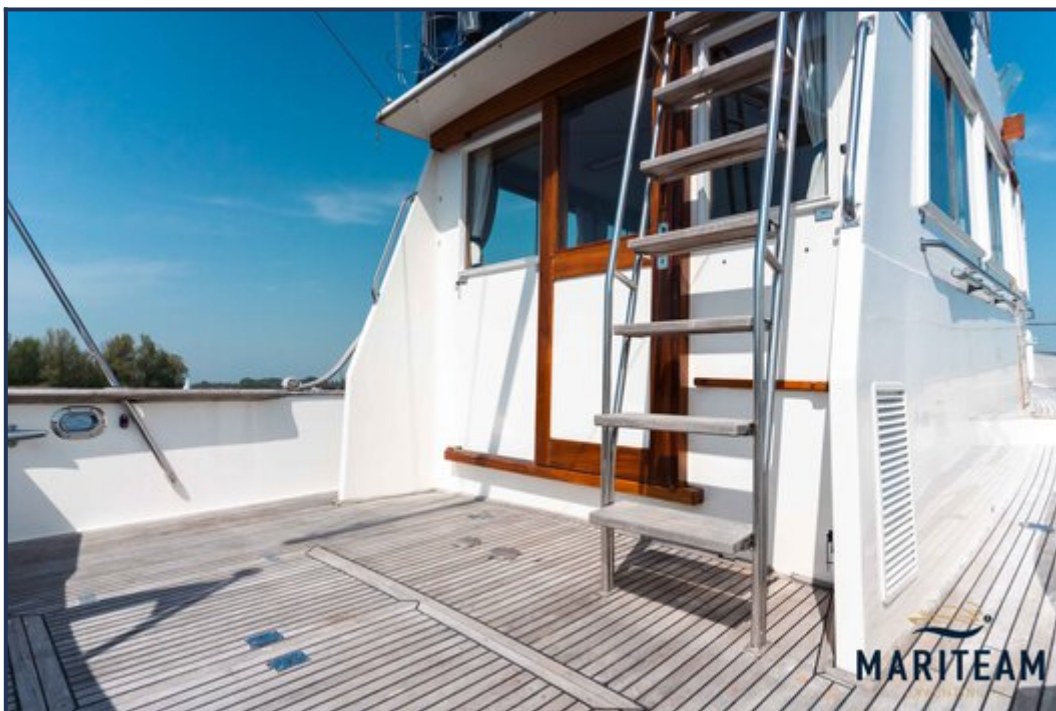
Windlass:	Tigress Lofrans 1000W
Deck shower:	1x
Horn:	Fiam MT-NA







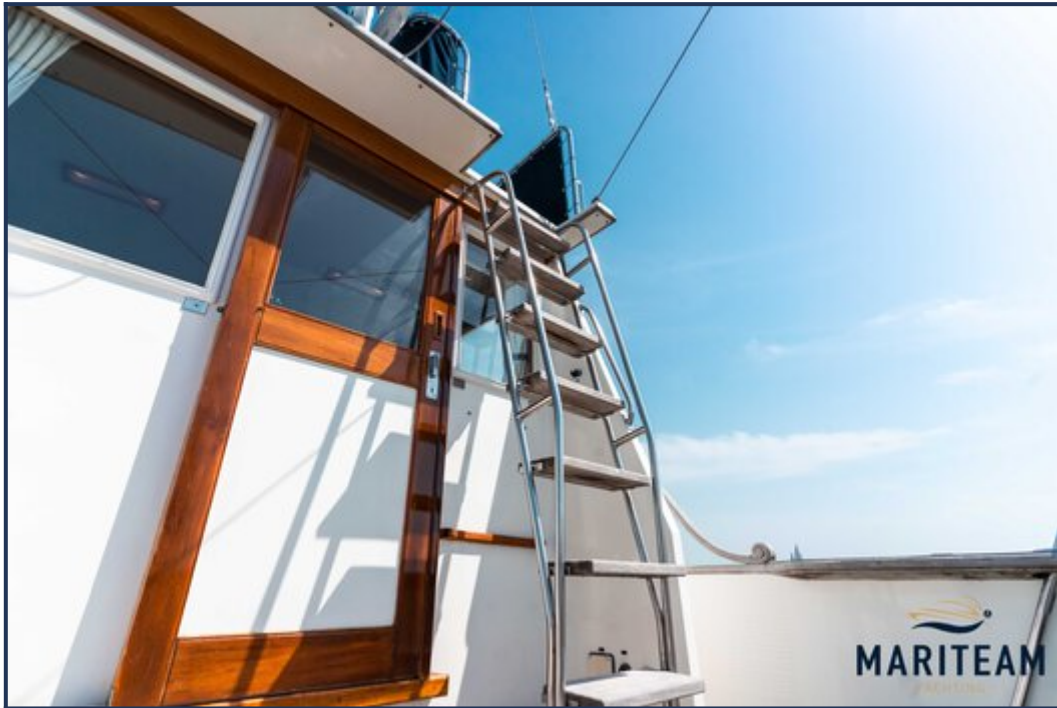






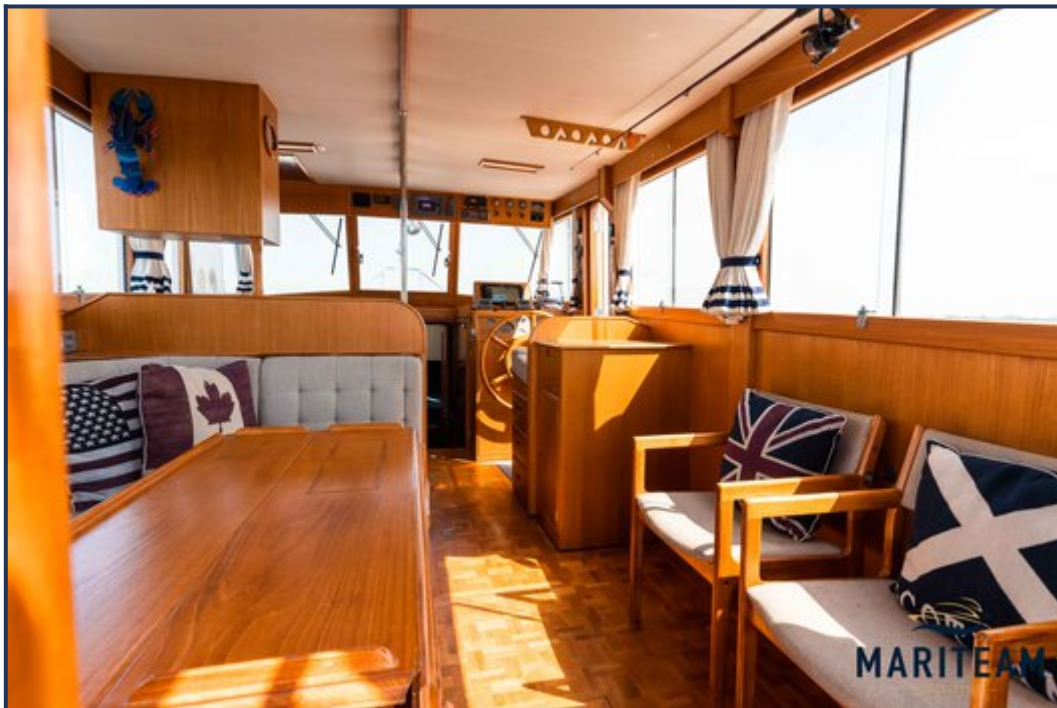


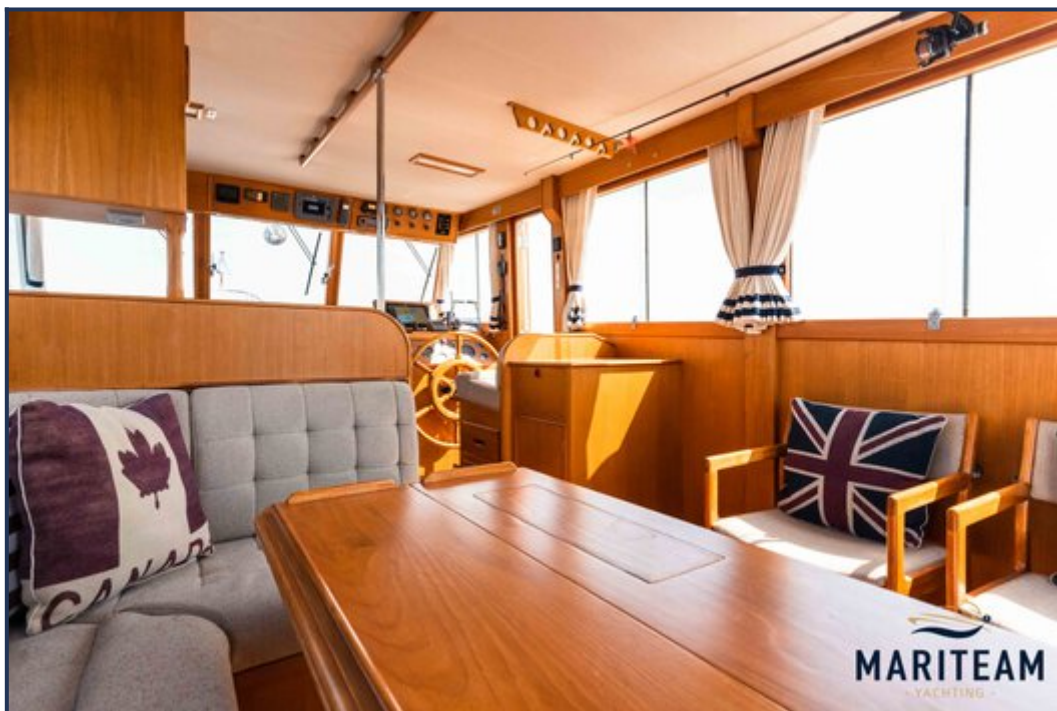






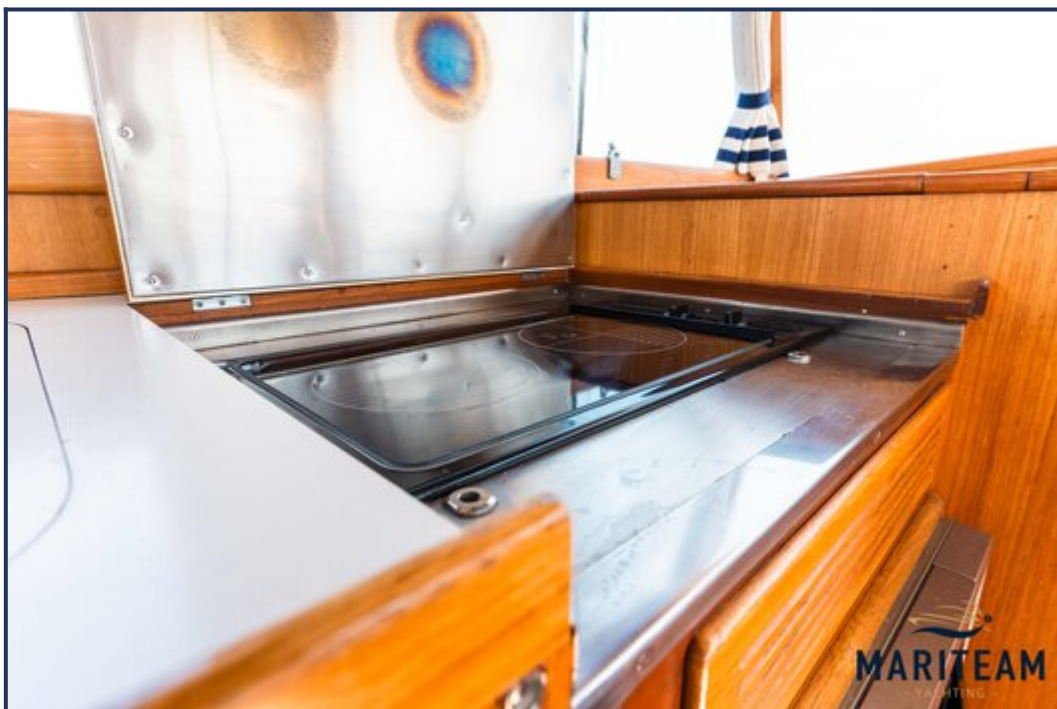


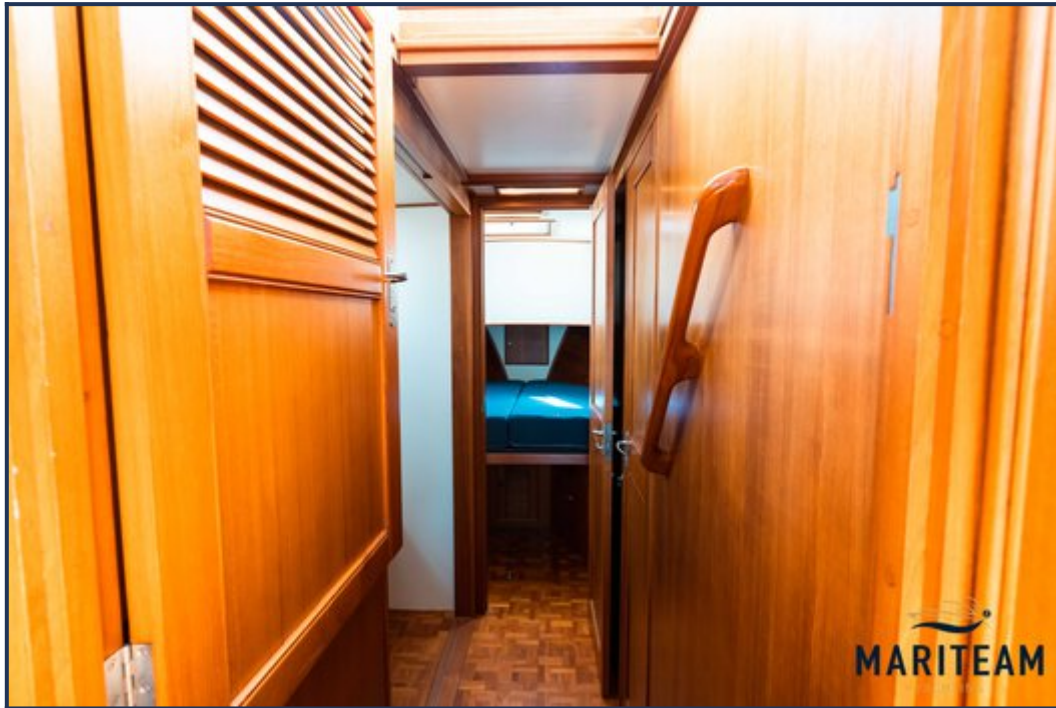


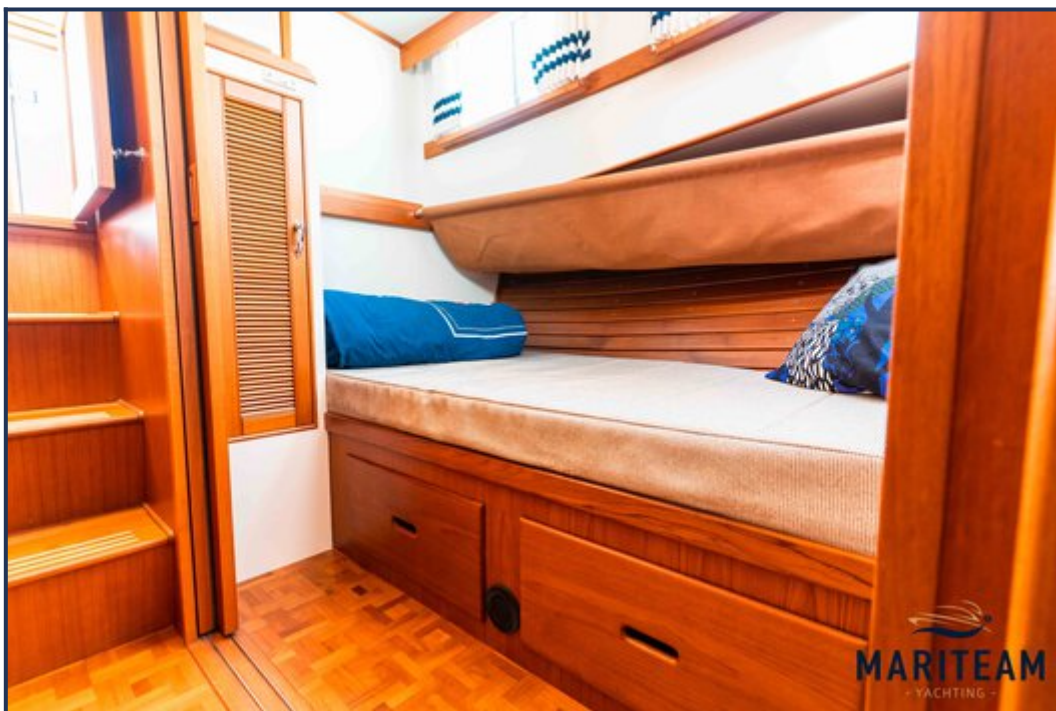


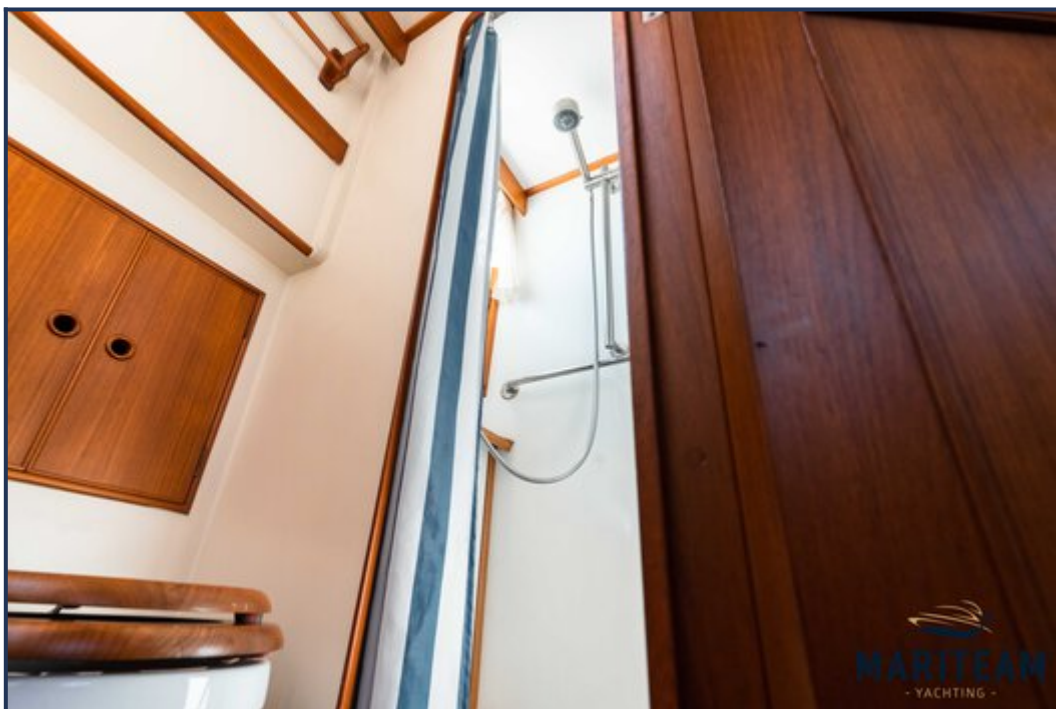
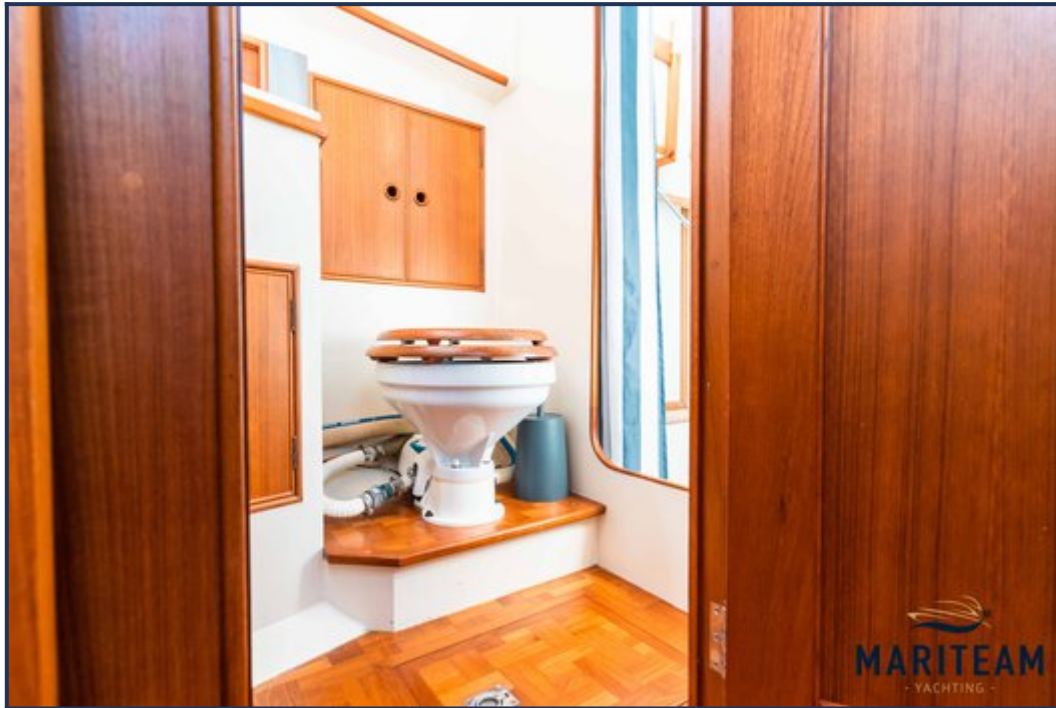


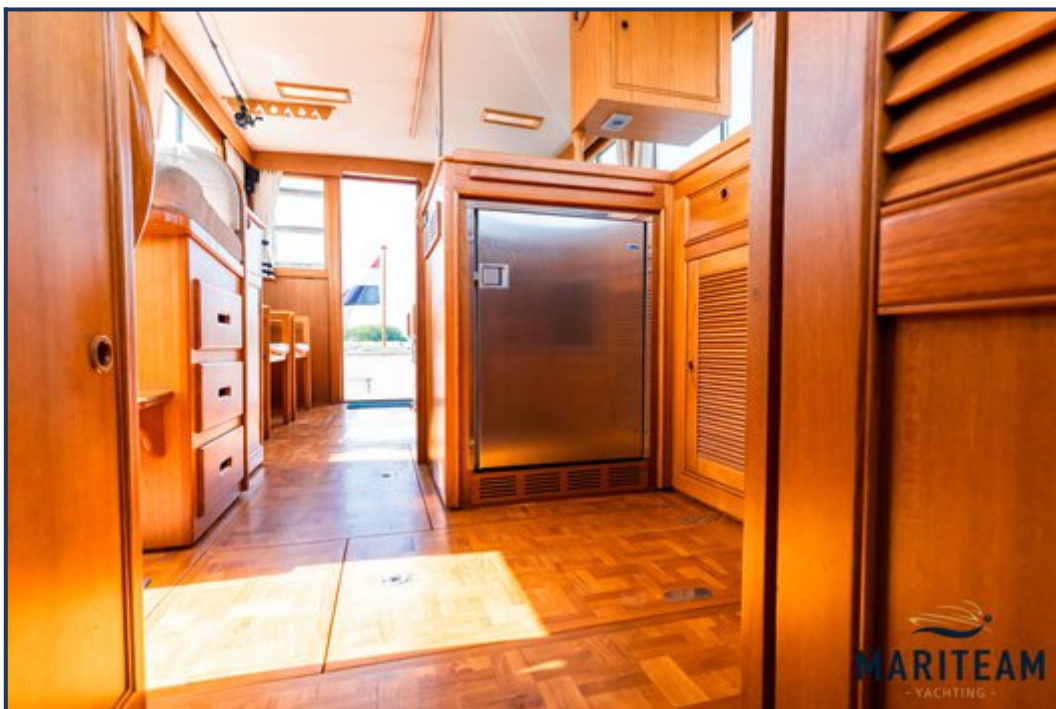




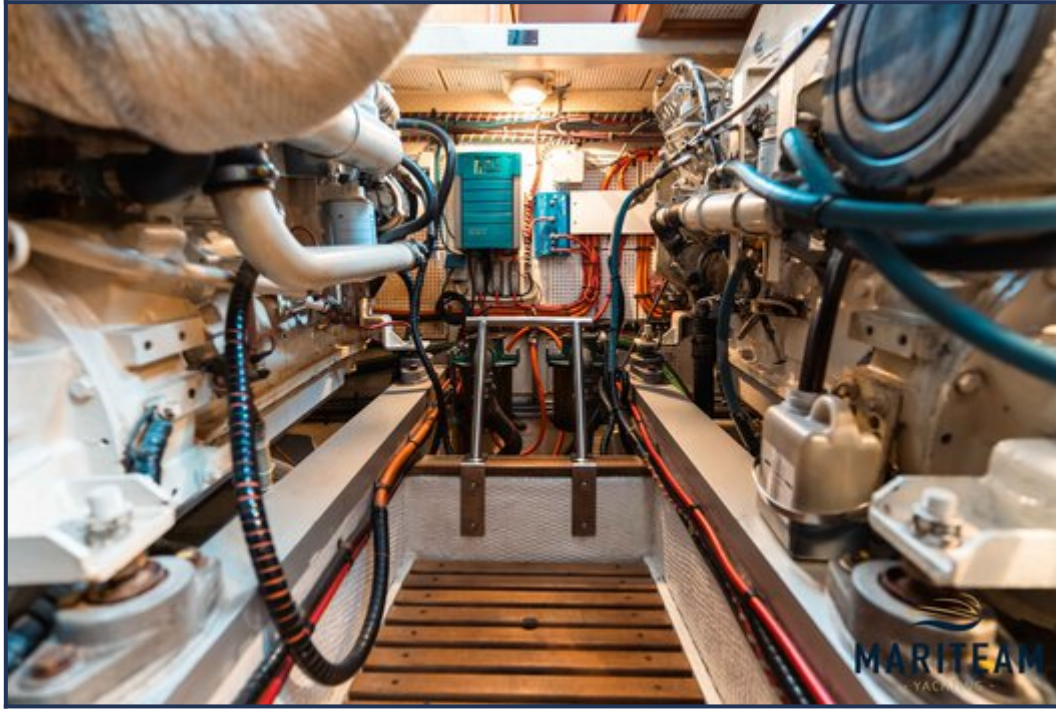


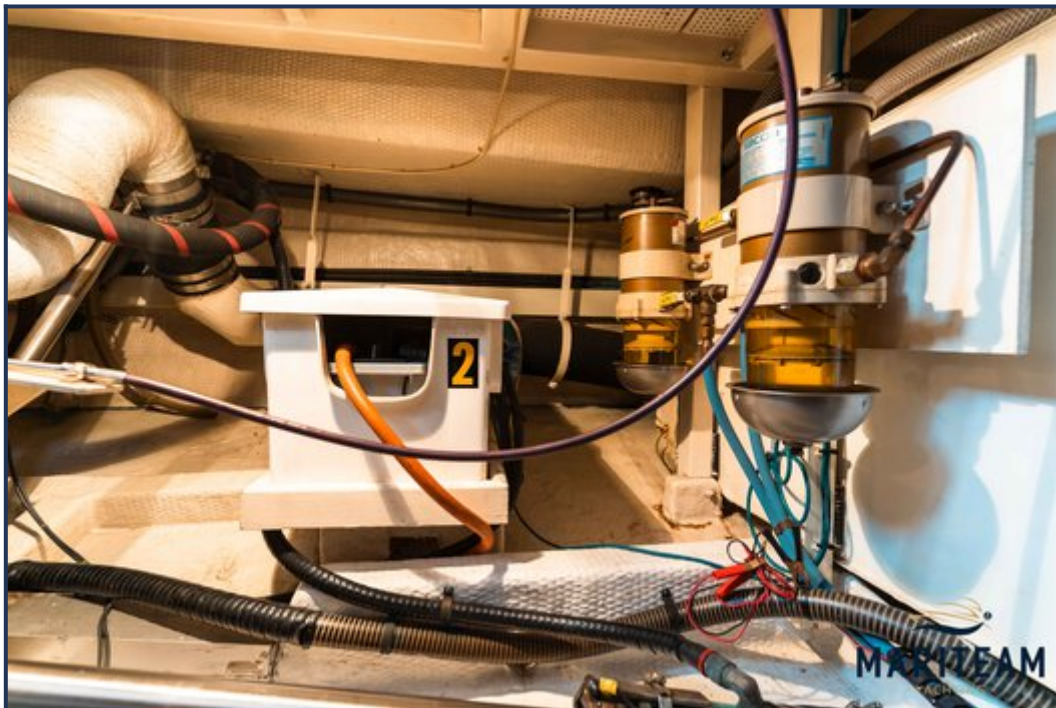


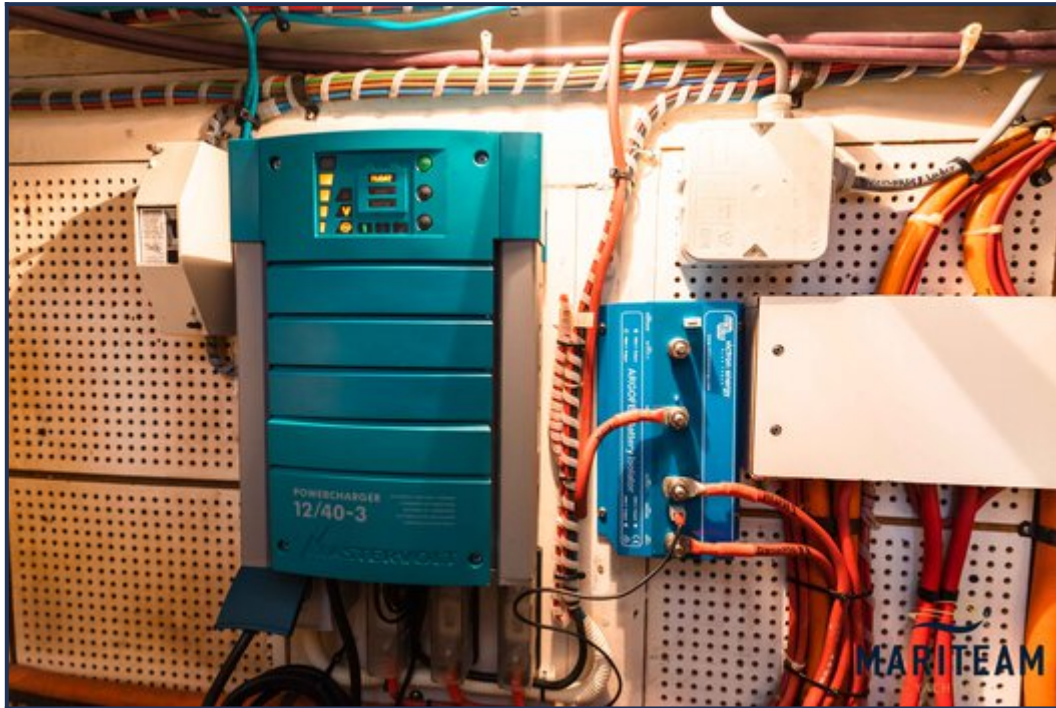












These particulars are given in good faith as supplied but cannot be guaranteed and cannot be used for contracts.